

GENESIS



HOSPITAL

SAFE & HYGIENIC SOLUTIONS

Genesis Development Limited

Indoor Flooring Solution | Toilet Cubicle Solution
Wall Solution | Locker & Bench Solution | Outdoor Flooring Solution

We give solutions
for hospitals to contribute

Healthy, Hygienic & Safety



About Us

Genesis works closely with architects and interior designers to meet the unique needs of diverse applications. Our expertise covers a wide range of areas, including lavatories, commercial spaces, offices, clubhouses, educational institutions, healthcare facilities, and sports venues.



TOILET CUBICLE SOLUTIONS

Contemporary toilet cubicle system that has anti virus/ bacterial features and designed for the safety of patients and users.



LOCKER & BENCH SOLUTIONS

Customisable hygienic and safety locker system that provides high security of belongings for staffs and users. This is suitable for hospitals, offices, and ward areas.



WALL SOLUTIONS

The IPS Hygienic wall panels are constructed of durable easy maintenance and access IPS framework system. A corrosive resistance and hygienic system suitable for all locations and industries.



WALL TO FLOOR SOLUTIONS

Integrated floor to wall protection and products are made with industry leading European brands, in order to guarantee global standards of craftsmanship and durable, sustainable materials.

Doctors Content of Product Prescriptions

Walk-In Clinic

Unit D, 3/F, Wing Chai Building,
27 Ng Fong Street, San Po Kong,
Kowloon, Hong Kong

01

INDOOR FLOORING SOLUTION

Page 07

MIPOLAM Homogeneous Acoustic Flooring
TARALAY Heterogeneous Acoustic Flooring

02

TOILET CUBICLE SOLUTION

Page 16

HED™ Anchor G5 Compact Toilet Cubicle system

03

WALL SOLUTION

Page 22

IPS Wall Panel System

04

LOCKER & BENCH SOLUTION

Page 38

Kubisch Locker System

05

OUTDOOR FLOORING SOLUTION

Page 48

Kankyo wood II WPC Decking

ANTI-CORONA VIRUS



Linea Touch
100% Antibacterial Handrail

Evercare & Protec Sol
FLOORING SERIES

Gerflor surfaces have been tested according to the **ISO 21702** standard with very positive results

ANTI VIRAL SURFACES:
99,7% OF HUMAN
CORONA VIRUS ELIMINATED
AFTER 2 HOURS

Anti Viral
ACTIVITY
99.7%
after 2hrs

R2006GER003-1

Determination of the virucidal activity of a PVC floor covering with Evercare/Protec Sol² surface treatment on the human coronavirus HCoV-229E for contact times of 2 and 5 hours. Protocol adapted from ISO 21702 (2019)

CLIENT

GERFLOR
Monsieur Philippe MAGRO
50 cours de la République
69627 Villeurbanne
France

SERVICE PROVIDED BY

S.A.S VIRHEALTH
Site Laennec-La Buire, 2ème étage, Bat B
7-11 rue Guillaume Paradin,
69372 Lyon Cedex 08

TECHNICAL CONTRIBUTION

Léa Szpiro, responsable laboratoire
Dounia Bouchami, technicienne de laboratoire

Approver / Quality Validation

Name: Dr Vincent Moulès, General manager

Date: 2020/6/25 Lyon

Signature

(Handwritten signature)
VirHealth
RTM Laennec
7-11 rue Guillaume Paradin, 69008 Lyon
France

This test report has 11 pages

Vir Health Certificate

INDOOR FLOORING SOLUTION

01

EVOLVING DESIGN TOWARDS FOR THE PEOPLE SAFETY

Gerflor is recognized as a specialist and a world leader in commercial flooring solutions. The group creates, manufactures and markets innovative, design-led and ecoresponsible solutions for flooring and complementary interior finishes. As a leading vinyl flooring manufacturer they are already well-established in more than 100 countries, Gerflor is continuously developing its activities in new markets.

Anti Viral
ACTIVITY
99.7%
after 2hrs



Mipolam

High Performance Homogeneous flooring

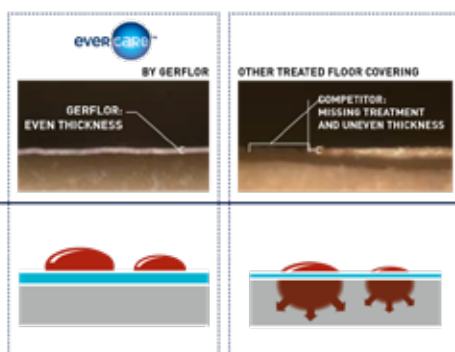


PATENTED EVERCARE™ TREATMENT

1. STAIN BARRIER

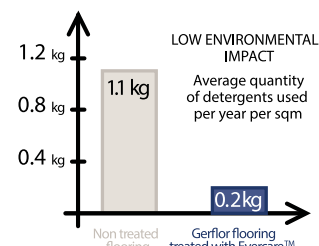
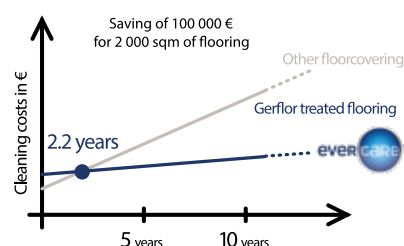
Highly Durable: Exclusive surface treatment applied by UV laser cross-linking provides superior durability and an even surface thickness, creating an impenetrable barrier against stains and chemicals found in healthcare.

Life expectancy of over 20 years.



2. NO WAX FOR LIFE

Saved water and detergent
10 times less cleaning products to maintain Gerflor floor coverings compared with a non-treated floorcovering.



3. 100% HYGIENIC

- No contamination & bacteria development



4. HIGH PERFORMANCE

- Floorcovering for heavy traffic area



5. HIGHEST INDOOR AIR QUALITY

- TVOC emissions 10 times better than norms requirements (TVOC < 100 µg/m³ after 28 days)
- TVOC < 10 µg/m³ after 28 days for all products treated Evercare™ Protecsol®2
- Floorscore certified
- M1 certified
- Comply with AgBB protocol
- No formaldehyde emission

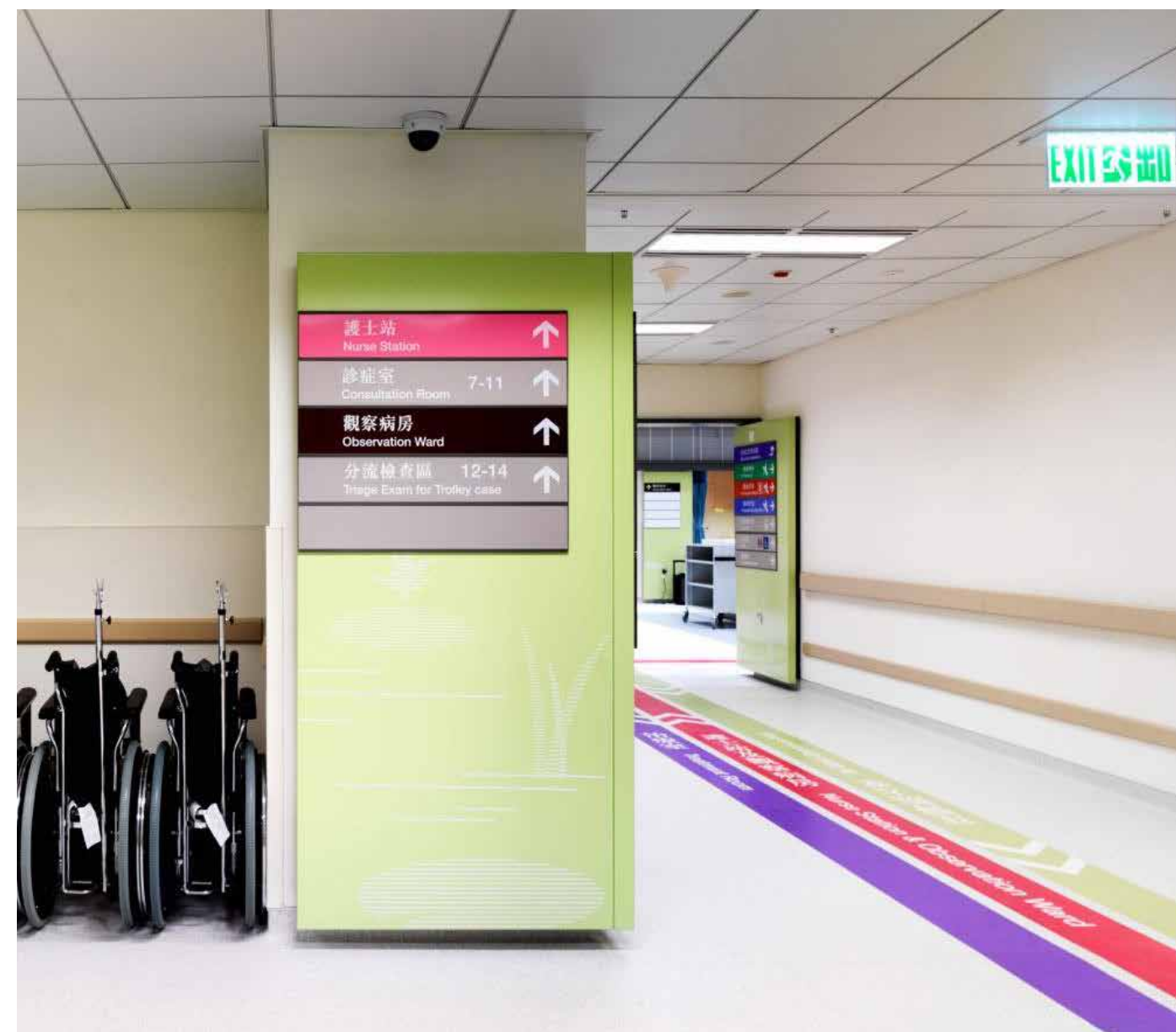


6. Easy Rolling of Heavy Load

- Premium flooring offers the best dynamic indentation: starting force and pushing are reduced by 35% in comparison with other floorings.

Very good dynamic load resistance of hospital beds, wheeled equipment etc.

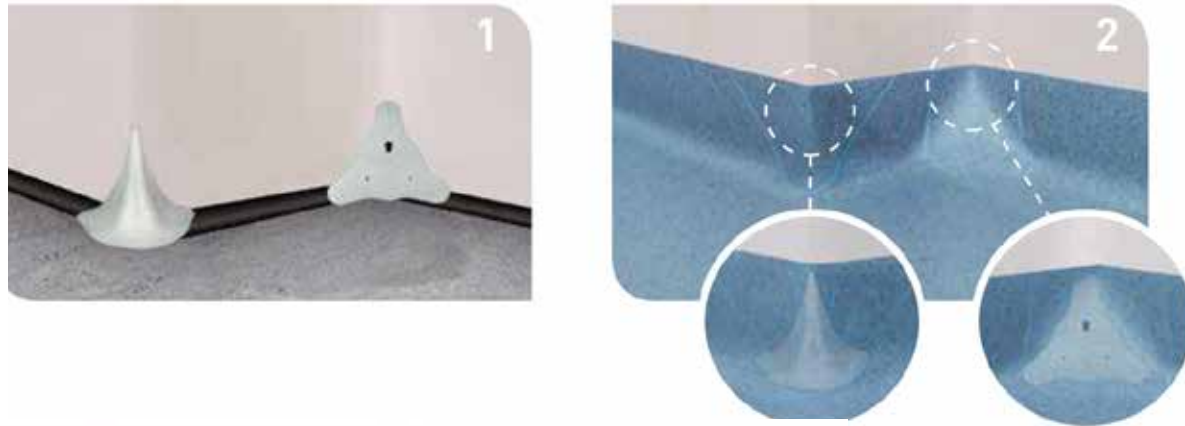
All Gerflor floorings are Suitable for **Automated Guided Vehicle system**



CLEAN CORNER

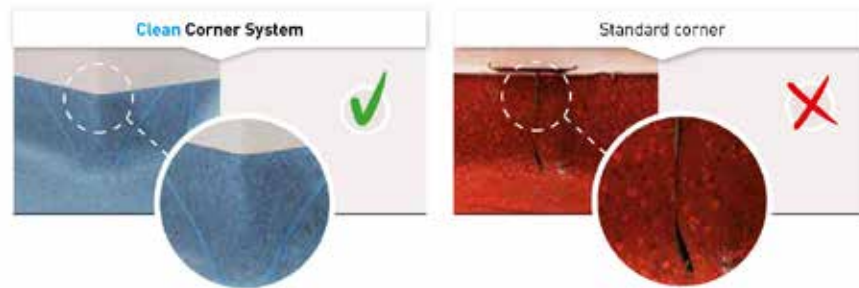
Controlling contamination in technical facilities and clean rooms is always a challenge. Corners, in particular, are where most of the imperfections are found:

- Their shape makes cleaning and decontamination difficult
- Poorly welded, they can tear or sag under the weight of traffic
- Weakened by use, they end up losing their watertightness



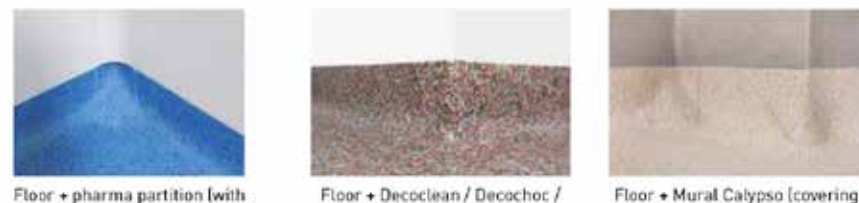
> SUSTAINABILITY, DURABILITY & STABILITY

No risk of tearing or delamination of the floor covering in the corners.

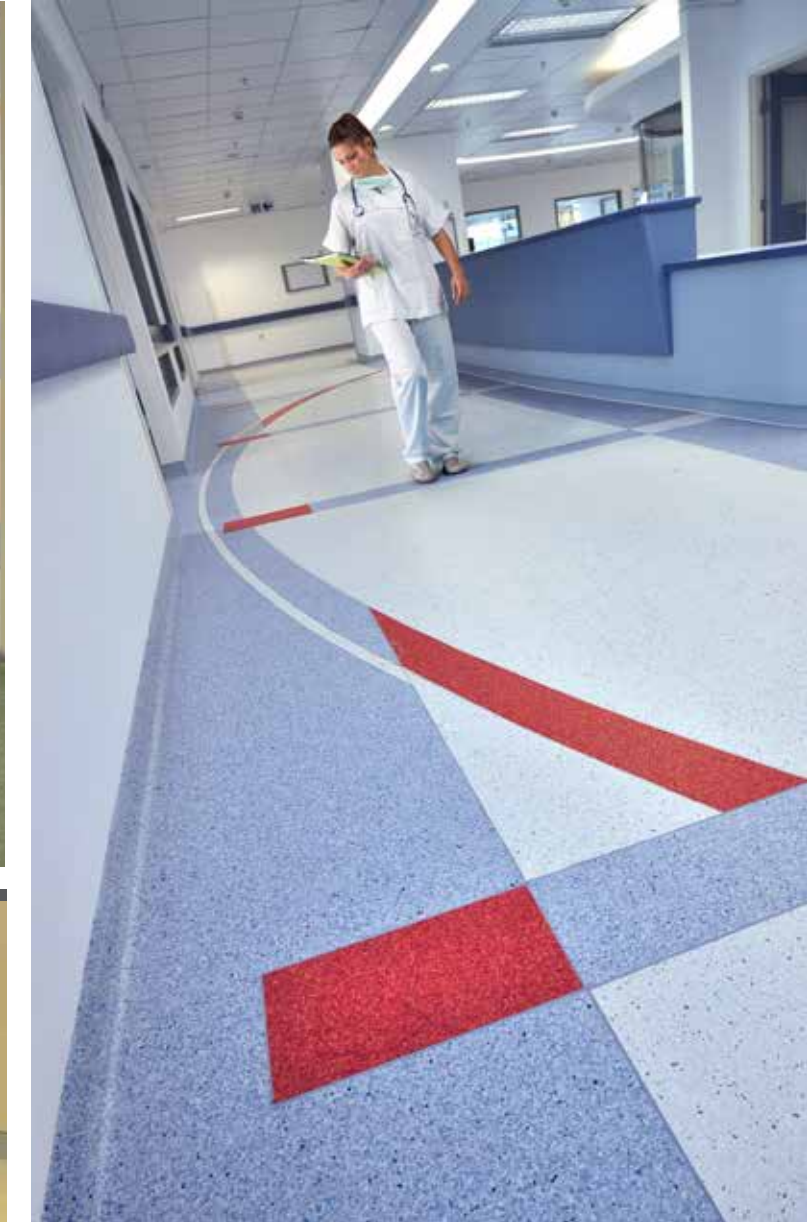


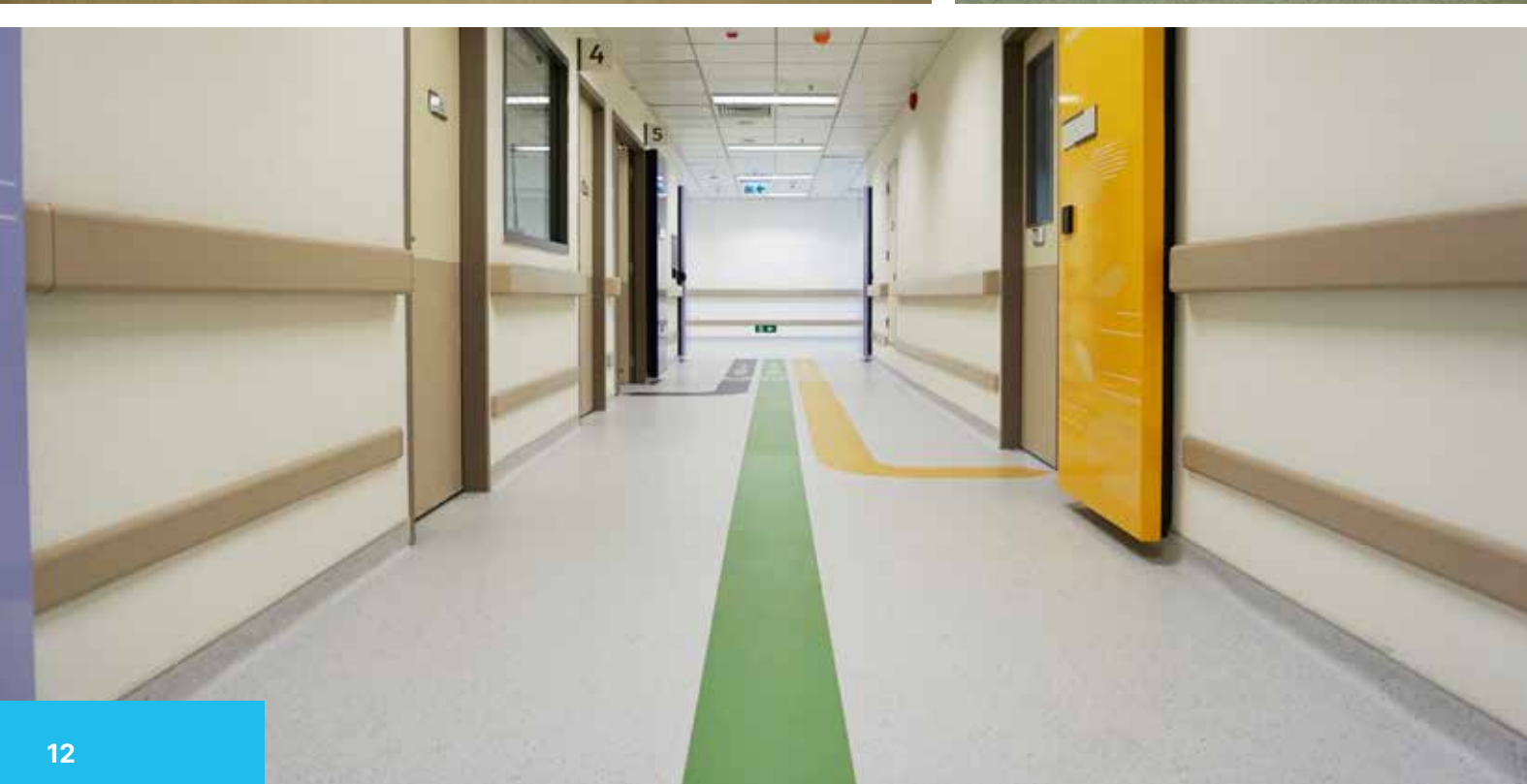
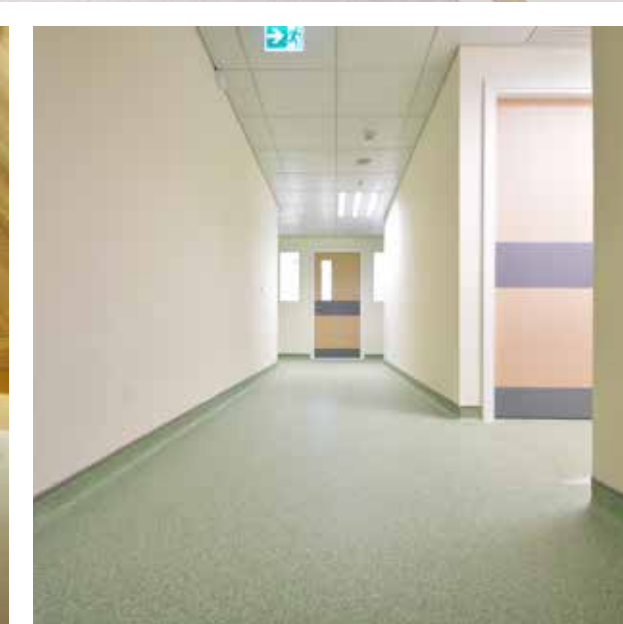
> WATERTIGHTNESS & VERSATILITY

Developed to make coving easier in the corners and to limit welding, the **Clean Corner System** ensures perfect watertightness.



Floor + pharma partition (with) Floor + Decoclean / Decochoc / Floor + Mural Calypso (covering)





SPM HANDRAIL & WALL PROTECTION



1. 100% ANTIBACTERIAL

HYGIENE AND DECONTAMINATION

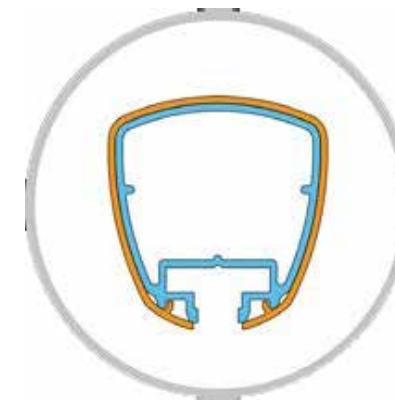
- 100% of bacteria are killed in 30 minutes after decontamination (reports by NOSOC.tech)



- 100% antibacterial (reports by Nosoco.tech)
- 100% decontaminable (tests by Anios and Institute Pasteur)
- 100% watertight with the hot-welded Decochoc / vinyl floor system



2. FLOOR TO WALL SOLUTION



Gerflor provides the most comprehensive range of:

- Flooring
- Wall protection
- Handrails
- Corner protection
- Door protection
- Interior finishes (skirting...)
- Technical solutions (adhesives, tools...)

A fantastic opportunity for our customers to have a combined and complete floor & wall offer. Gerflor has perfectly adapted its offer to healthcare establishments expectations.

- Unique combination of comfort acoustic / compact flooring
- Perfect colour combination of walls and floors

In addition, Gerflor offers very specific systems for very specific applications such as:

- Shower systems
- Stairs
- Full coving system



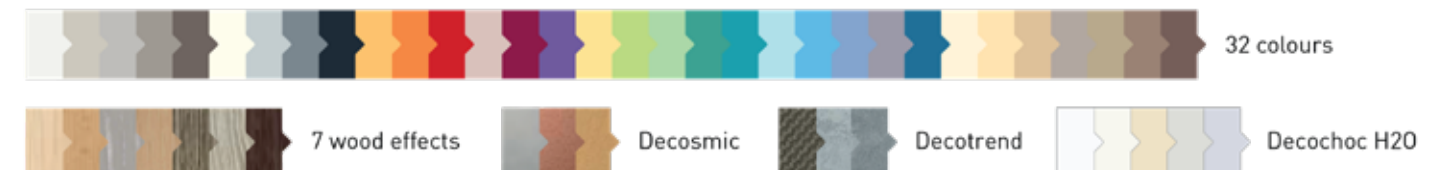
3. IMPACT RESISTANCE

- Resistant to impacts, shocks and scratches (320 kg at a 3 km/h speed)

Fire rating BS2d0 fire rating according to EN 13501-1 d)



COLOURS AND DECORS



TOILET CUBICLE SOLUTION

02

ANTI-SUICIDE DESIGN

FEATURES:

▶ **ANTIBACTERIAL.** **TESTED 9 BACTERIA & FUNGUS**

- | | |
|---------------------------|---------------------------|
| 1. Pseudomonas Aeruginosa | 6. Klebsiella Pneumoniae |
| 2. Enterococcus Faecalis | 7. MRSA |
| 3. Candida Albicans | 8. Salmonella Enterica |
| 4. Pseudomonas Aeruginosa | 9. Candida albicans ATC C |
| 5. EscherichiaColi | |

▶ **RESISTANCE TO SURFACE ABRASION & SCRATCH.**

▶ **ANTI-CIGARETTE BURN.**

▶ **RESISTANCE TO MOISTURE.**

“Cubicle partitioning that combines safety and privacy at the same time”.



Anchor G5 CH

Ceiling Hung Cubicle Partitioning



ANTI-SUICIDE DESIGN

Model:

Genesis HED Anchor G5 CH Cubicle system made of HED TUF water resistance Stratificato Solid Phenolic panels with finest stainless-steel ironmongery for stability, simplicity, durability and versatile product resistant to vandalism, impact and water.

Materials:

12 mm and 18 mm thick self-supporting Stratificato Solid Phenolic panels with even black core according to EN 438 (BS EN 438-2 : 2005). Manufactured with Antibacterial coating according to [JIS Z 2801:2000]. Standard panel dimensions are 1800 mm x 3600 mm, minimum joint for division panel is 1800 mm. CNC routing used to ensure all sharp edges are rounded for enhanced safety.

Pilaster, Doors and Partitions:

Pilasters in 12/18 mm thick Stratificato Solid Phenolic panels, Doors and Dividers. Doors have flush design with functional lipping trim edges to accommodate hinges and quiet rubber bumpers. Doors manufactured with all edges bevelled and corners rounded with 2 mm radius.

Frameworks and Engineered Hardware:

HED engineering ironmongeries must be applied, including gravity door hinges, angle brackets, indicator lock with emergency opening and coat hook with integrated rubber door stopper function. HED S316 Stainless Steel Anchor F3 Mechanism applied for floor-anchored system.



Water Resistance



Cigarette Burn Resistance



Impact Resistance

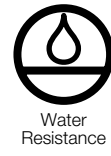


Easy Maintenance



Unlimited Color Combination





Water
Resistance



Cigarette Burn
Resistance



Impact
Resistance



Easy
Maintenance



Unlimited Color
Combination

Anchor G5 FA

Floor Anchor Cubicle Partitioning



Materials:

Model:

Genesis HED Anchor G5 FA Cubicle system made of HED TUF water resistance Stratificato Solid Phenolic panels with finest stainless-steel ironmongery for stability, simplicity, durability and versatile product resistant to vandalism, impact and water.

12 mm and 18 mm thick self-supporting Stratificato Solid Phenolic panels with even black core according to EN 438 (BS EN 438-2 : 2005). Manufactured with Antibacterial coating according to [JIS Z 2801:2000]. Standard panel dimensions are 1800 mm x 3600 mm, minimum joint for division panel is 1800 mm. CNC routing used to ensure all sharp edges are rounded for enhanced safety.

Pilaster, Doors and Partitions:

Pilasters in 12/18 mm thick Stratificato Solid Phenolic panels, Doors and Dividers. Doors have flush design with functional lipping trim edges to accommodate hinges and quiet rubber bumpers. Doors manufactured with all edges bevelled and corners rounded with 2 mm radius.

Frameworks and Engineered Hardware:

HED engineering ironmongeries must be applied, including gravity door hinges, angle brackets, indicator lock with emergency opening and coat hook with integrated rubber door stopper function. HED S316 Stainless Steel Anchor F3 Mechanism applied for floor-anchored system.

ANTI-SUICIDE DESIGN

HED™ Anchor G5-FA is a safety NON-HEADRAIL system specified by hospital and healthcare facilities for ANTI-SUICIDE DESIGN, a common unfortunate occurrence in standard cubicle systems. Moreover, Anchor G5-FA system with build in extra reinforced durable structure make it perfect for Hospital or Healthcare facilities.

WALL SOLUTION

03

IPS[®]

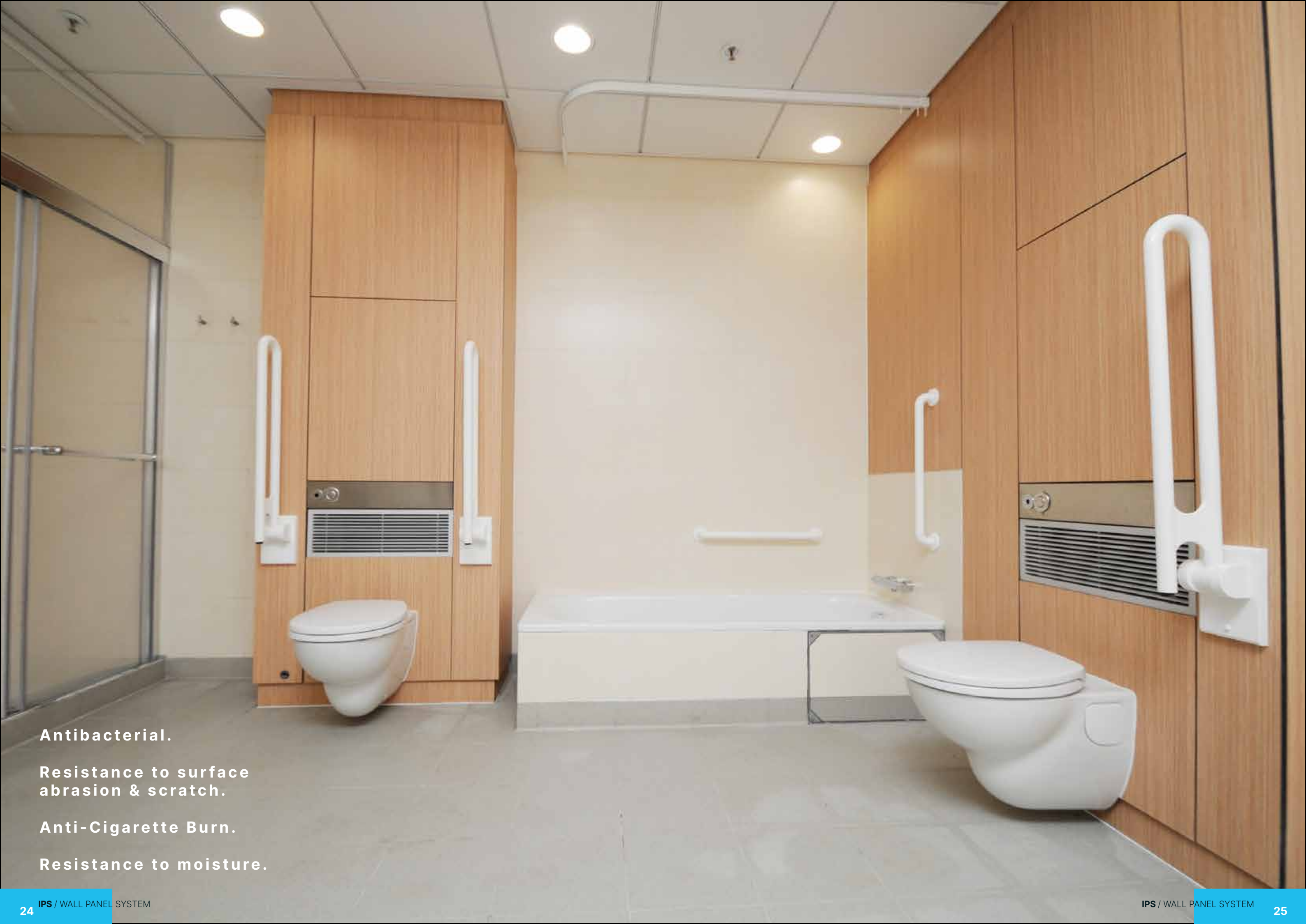
WALL PANEL SYSTEM

IPS Wall Panel System is constructed by robust aluminum alloy structural frame together with 13mm thick compact Laminate panel for maximum stability.

IPS wall panel system is durable, impact and vandalism resistant as well as maintenance free.



“Strong, Durable and Hygienic wall panels”.



Antibacterial.

**Resistance to surface
abrasion & scratch.**

Anti-Cigarette Burn.

Resistance to moisture.

IPS

Wall Panel Systems

1 Wash Basin/Urinal
Access Wall Panel System



3 Glaze Wall
Wall Panel System



2 Toilet Cubicle
Wall Panel System



4 Bed Head
Wall Panel System



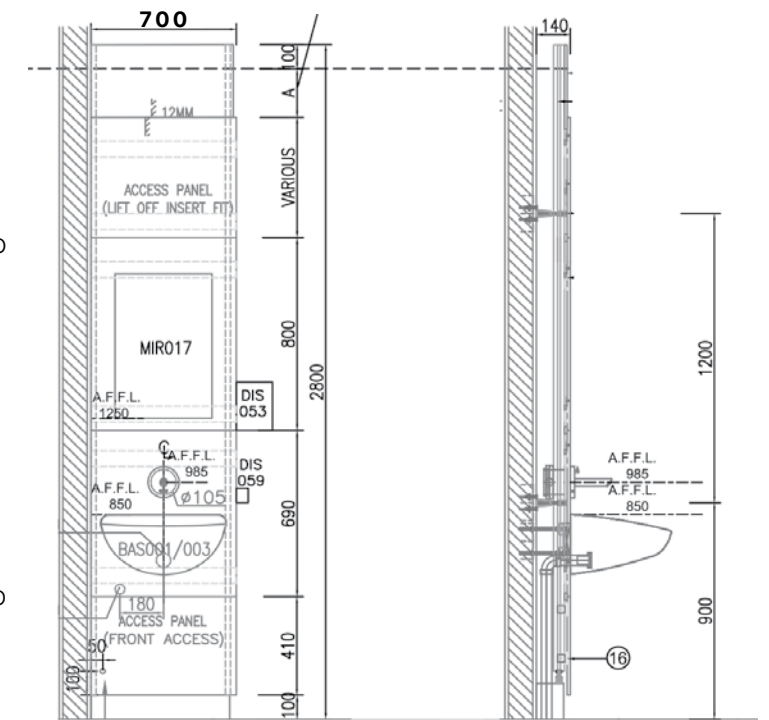


1 Wash Basin

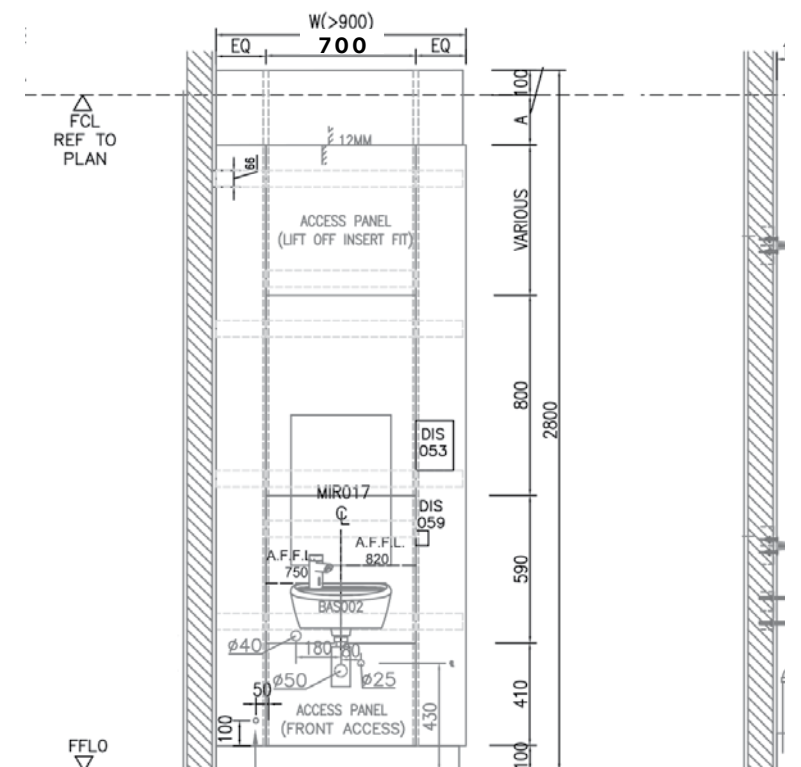
IPS Wall Panel System

The system is constructed by robust aluminium / gms structural frame together with 13mm thick solid phenolic panel in one piece and all necessary accessories. absolutely moisture resistance, rot proof, scratch and impact resistant. all in strict accordance to manufacturer's instruction.

- access to services for the concealed pipework is possible and reliable.
- extra strong structural frame ensure extreme durability of the system.
- ability to carry sanitaryware up to 150kg including wc, urinal, basin, handrail
- anti-bacteria medical panel



Wash Basin Design 01



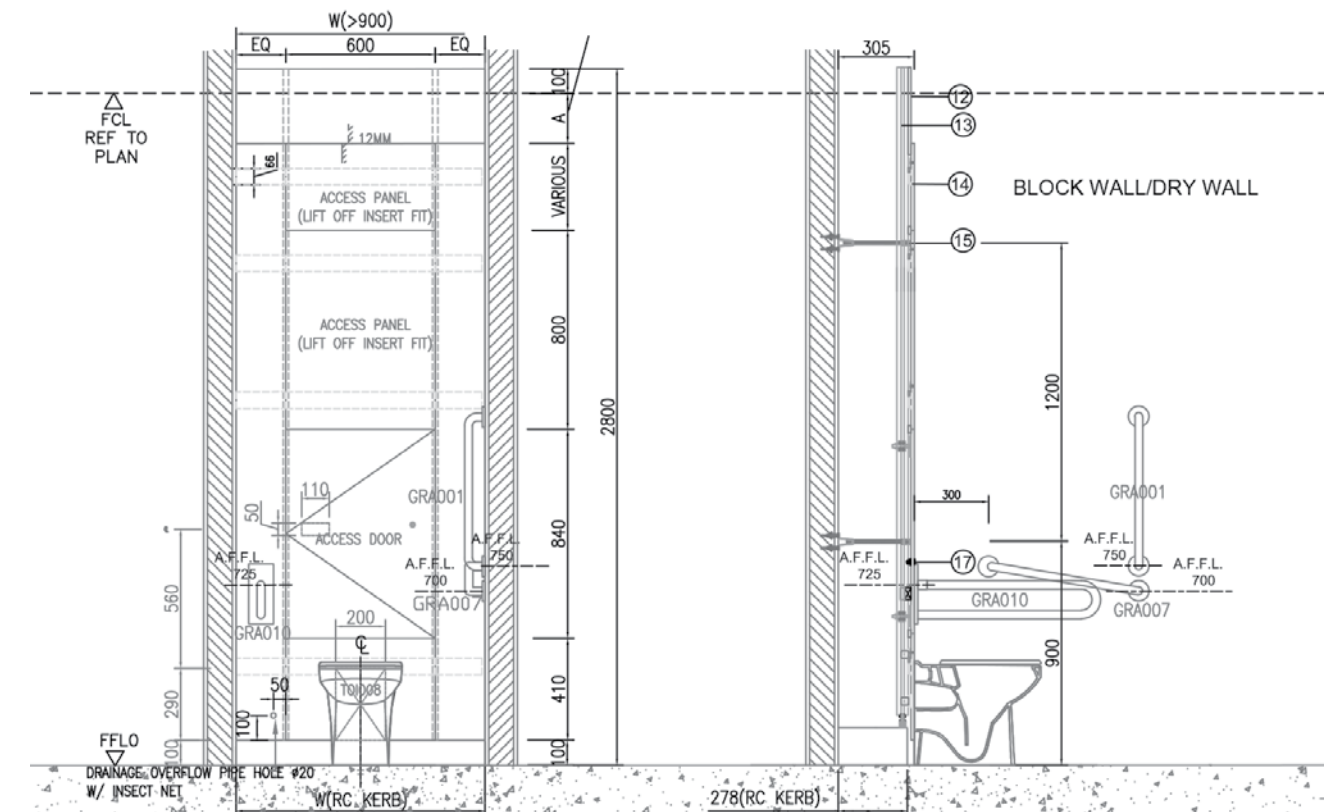
Wash Basin Design 02



1 Urinal IPS Wall Panel System

The system is constructed by robust aluminium / gms structural frame together with 13mm thick solid phenolic panel in one piece and all necessary accessories. absolutely moisture resistance, rot proof, scratch and impact resistant. all in strict accordance to manufacturer's instruction.

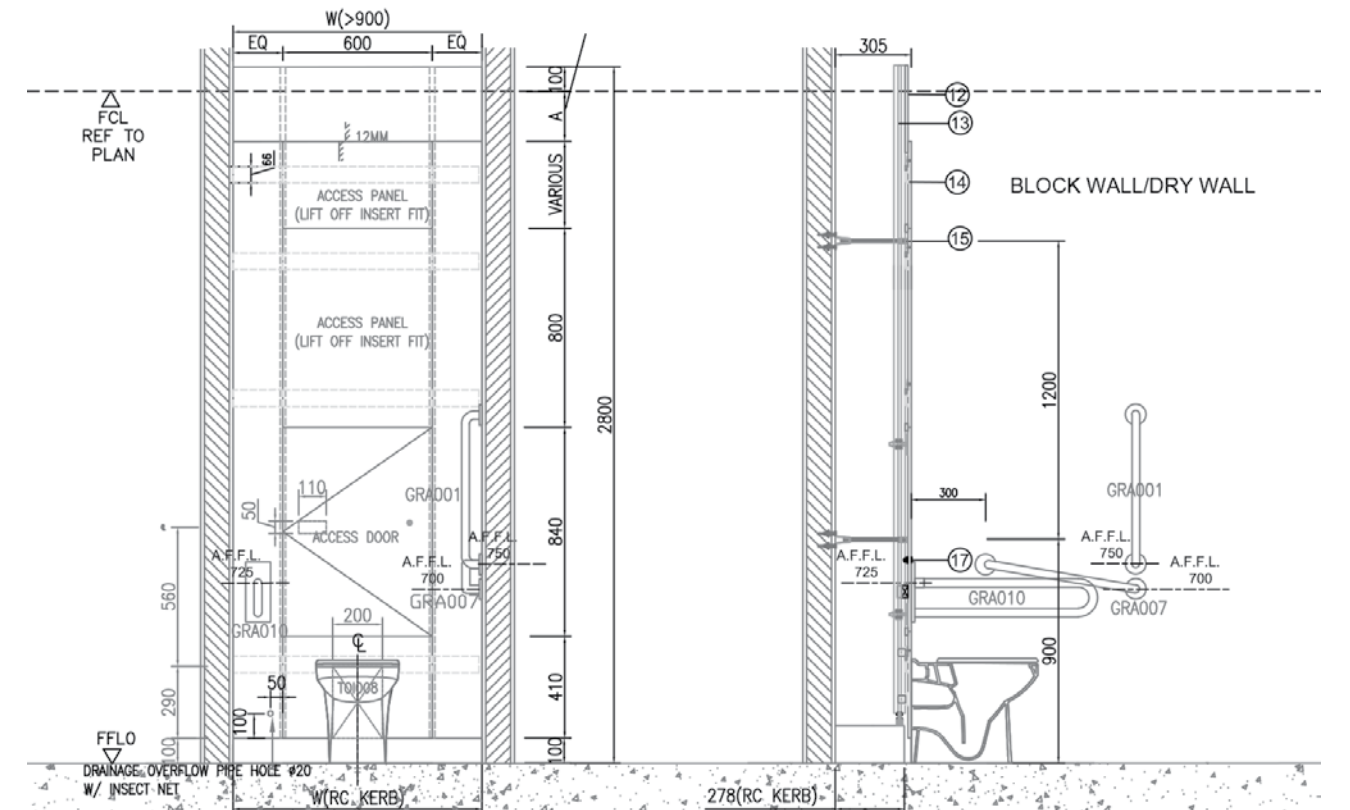
- Access to services for the concealed pipework is possible and reliable.
- Extra strong structural frame ensure extreme durability of the system.
- Ability to carry sanitaryware up to 150kg including wc, urinal, basin, handrail
- Anti-bacteria medical panel





2 Toilet

IPS Wall Panel System





3 Glaze

IPS Wall Panel System



The system is constructed by robust aluminium / gms structural frame together with 13mm thick solid phenolic panel in one piece and all necessary accessories. absolutely moisture resistance, rot proof, scratch and impact resistant. all in strict accordance to manufacturer's instruction.

- Access to services for the concealed pipework is possible and reliable.
- Extra strong structural frame ensure extreme durability of the system.
- Ability to carry sanitaryware up to 150kg including wc, urinal, basin, handrail
- Anti-bacteria medical panel



4

Bed Head

IPS Wall Panel System



The system is constructed by robust aluminium / gms structural frame together with 13mm thick solid phenolic panel in one piece and all necessary accessories. absolutely moisture resistance, rot proof, scratch and impact resistant. all in strict accordance to manufacturer's instruction.

- Access to services for the concealed pipework is possible and reliable.
- Extra strong structural frame ensure extreme durability of the system.
- Ability to carry sanitaryware up to 150kg including wc, urinal, basin, handrail
- Anti-bacteria medical panel

LOCKER & BENCH SOLUTION

04

EVOLVING DESIGN TOWARDS FOR THE PEOPLE SAFETY

HED™ KUBISCH Locker systems are constructed by the finest sustainable materials using state-of-the-art technology to deliver the most ideal solutions to demanding architects and developers.

The systems are made from 100% water resistant High Pressure Laminate (HPL), stainless steel anti-rust hardware and extruded aluminium profiles which offers architects and developers an ideal solution for wetness prone spaces.

“Secure and Anti-Bacterial Locker design”.



HEDTM Kubisch

Locker & Bench Solution



Kubisch Locker Solution

Model:

Genesis HED Anchor G5 CH Cubicle system made of HED TUF water resistance Stratificato Solid Phenolic panels with finest stainless-steel ironmongery for stability, simplicity, durability and versatile product resistant to vandalism, impact and water.

Materials:

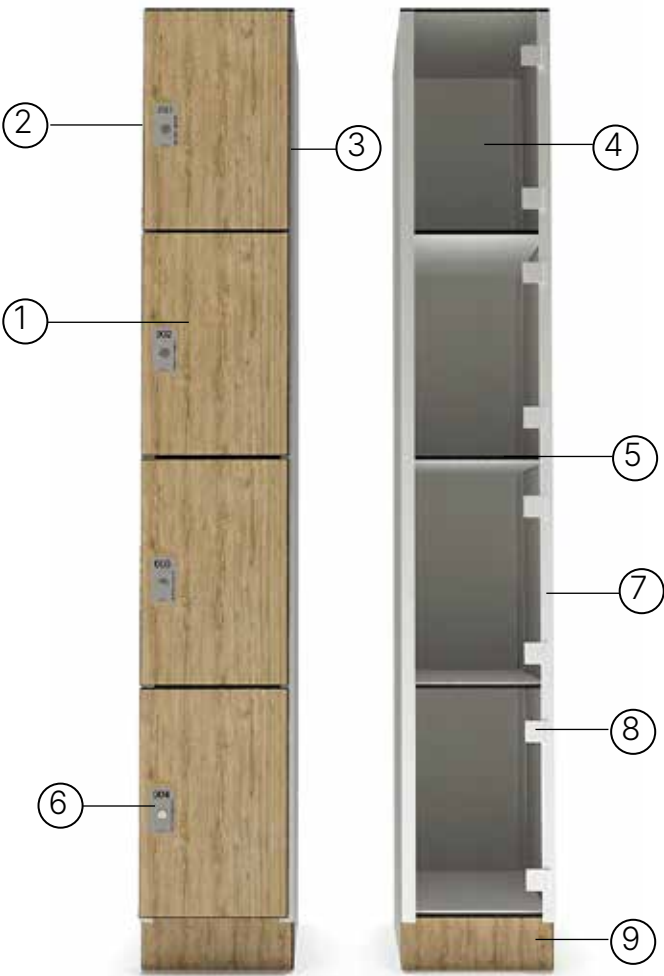
12 mm and 18 mm thick self-supporting Stratificato Solid Phenolic panels with even black core according to EN 438 (BS EN 438-2 : 2005). Manufactured with Antibacterial coating according to [JIS Z 2801:2000]. Standard panel dimensions are 1800 mm x 3600 mm, minimum joint for division panel is 1800 mm. CNC routing used to ensure all sharp edges are rounded for enhanced safety.

Pilaster, Doors and Partitions:

Pilasters in 12/18 mm thick Stratificato Solid Phenolic panels, Doors and Dividers. Doors have flush design with functional lipping trim edges to accommodate hinges and quiet rubber bumpers. Doors manufactured with all edges bevelled and corners rounded with 2 mm radius.

Frameworks and Engineered Hardware:

HED engineering ironmongeries must be applied, including gravity door hinges, angle brackets, indicator lock with emergency opening and coat hook with integrated rubber door stopper function. HED S316 Stainless Steel Anchor F3 Mechanism applied for floor-anchored system.



- 01 12 mm thick Door panel
- 02 8 mm Compact Side Panel
Color : Standard White
- 03 4 mm Thick Partition Panel
Color : Standard White
- 04 4 mm Thick Back Panel
Color : Standard White
- 05 8 mm Thick Shelf Panel
Color : Standard White
- 06 Camlock & Plastic Number
- 07 HED Aluminum Profile
- 08 HED Normal Stainless Steel Hinge
- 09 12 mm Compact Plinth





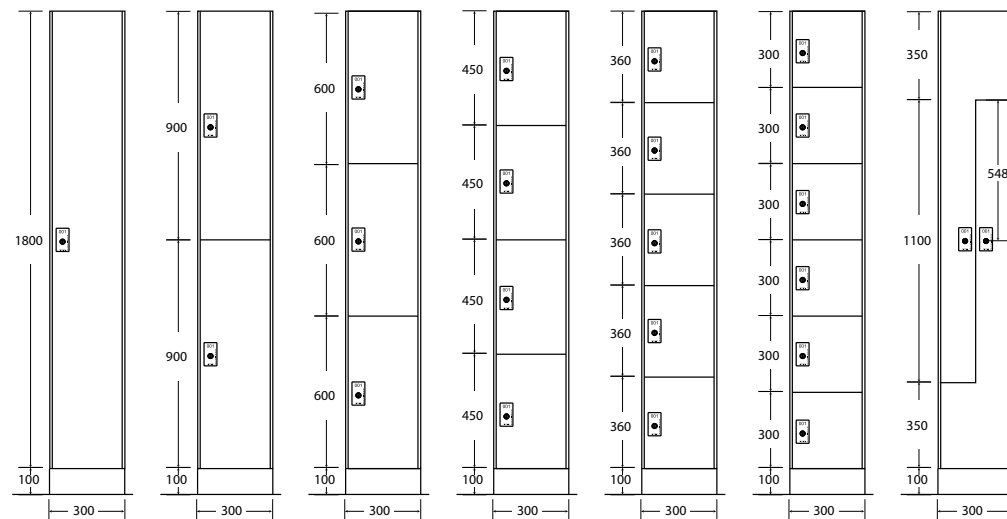


Locker Solution



LOCKERS SIZES

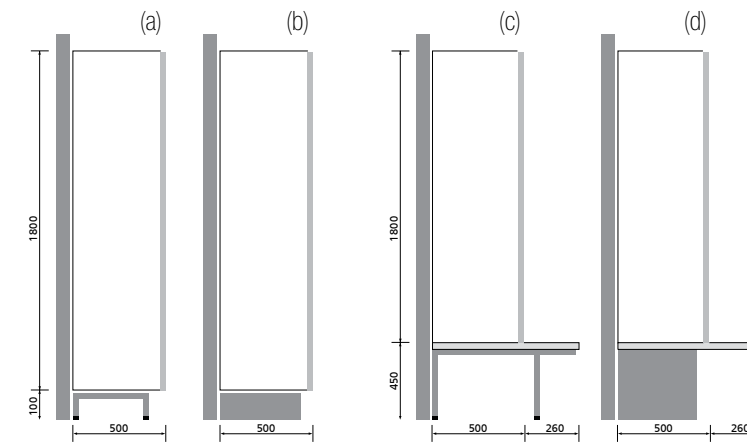
The division of Schäfer & HED™ lockers is very variable. No matter if single, double, multiple cabinets up to Z-cabinets, helmet and safety deposit boxes. Sizes and arrangements can be ideally attuned to the present space situation.



SET-UP VARIATIONS

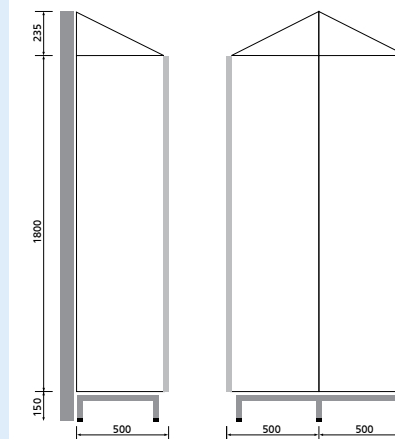
Also the set-up options cater for the relevant building situation:

- (a) Installation on aluminium plinth.
- (b) Installation on a tiled concrete plinth.
- (c) Installation on an aluminium plinth with integrated bench.
- (d) Installation on a tiled c



ROOF VARIANTS

Attached slanted rooves prevent that bags or other items will be placed on top of the cabinets. An important criterion in hygiene sections.



OUTDOOR FLOORING SOLUTION

OUTDOOR DECKING,
LOUVER & BENCH

EVOLVING DESIGN TOWARDS FOR THE PEOPLE SAFETY

Kankyo-wood II is an artificial extruded wood made from wood powder and plastic flake. Waste wood materials are collected from demolished buildings, industrial sites, etc and are pulverized into the size of microns. This is the base material that is then mixed and kneaded with recycled plastics to be molded to shape using an extruder.

05

“Strong, Durable and Hygienic wpc panels”.





Using wood and plastic as composite materials, **Kankyo-wood II** is molded from a blend of recycled plastics and pulverized wood recycled from industrial or construction sites.

The product is manufactured using extension molding, therefore it can be formed into various shapes and colors and utilized in a wide variety of fields.



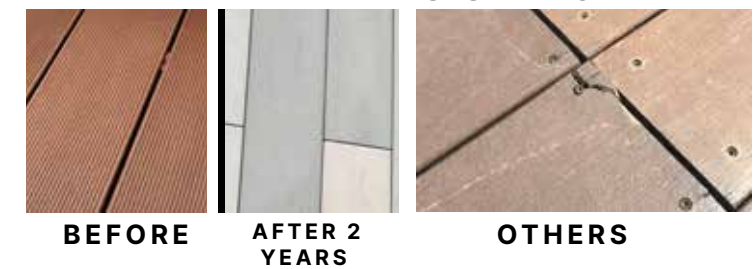
OUTDOOR BENCH



COMPARISON



WEATHER RESISTANCE



ANTI- CIGARETTE BURN



Features:

- ▶ No knots, wormholes, hangnailes that are the drawbacks of natural wood.
- ▶ Little deviation of the product strength and high strength uniformity in overall materials.
- ▶ Employs unique invisible finish of clamps and screws to maintain exterior appearance such as decks.
- ▶ No preservatives or insect repellent is required.
- ▶ No painting is required.
- ▶ Protecting verdant forests so that we can nurture a beautiful country and pass on an eternal Earth.

JOB REFERENCE

JOB REFERENCES

IPS Wall system & Toilet Cubicle System installed and achieved in Hong Kong

Queen Mary Hospital	2024
Kai Tak Sports Park	2024
Lam Tin Tunnel	2023
Treasury Building	2022
Joint Sports Centre	2022
Fu Shan Public Mortuary	2022
Hang Seng Bank Headquarters	2022
Industrial Building at Lot T6, ECO Park	2022
Expansion of Haven of Hope Tsuen Kwan O	2021
68 Yee Wo Street	2021
International College Hong Kong	2021
Yat Ming Road Park	2020
Yau Ma Tei Specialist Clinic	2020
Tin Shui Wai Hospital	2020
Chinese International School Expansion	2018
Kwai Chung Hospital	2018
Swatow Baptist Church	2018
Kwun Tong Clinic	2018
Complex for Juveniles	2016
Kowloon Cricket Club	2016
Ocean Park	2016
Nissin Food Group Factory	2016
Kwun Tong MTR	2016
Ma On Shan Centre	2014
HK Stadium	2014
Wanchai Computer Centre	2012

JOB REFERENCES

IPS Wall system & Toilet Cubicle System installed and achieved in Hong Kong

Redevelopment of Grantham Hospital Phase 1	2024
Galaxy Macau Phase 3A	2024
Main Stadium at Kai Tak Sports Park	2024
CUHK United Campus Student Hotel	2024
Tai Po Waterfront Park	2024
Our Lady of Maryknoll Hospital	2024
Kai Tak Sport Park North Precinct	2024
Supply Only of B(WL)2303 VTC, Tsing Yi	2024
Kwong Wah Hospital Phase 2	2022
CGO West Wing Central Office	2019

Locker & Bench installed and achieved in Hong Kong

Main Stadium at Kai Tak Sports Park	2024
Queen Mary Hospital	2024
Redevelopment of Grantham Hospital	2024
Haven of Hope Hospital	2023
New Acute Hospital	2023
Olive Nursing Home	2022
Queen Mary Hospital	2022
YMT-Clinic-QE Hospital	2022
Our Lady of Maryknoll Hospital	2022
Kwong Wah Hospital Phase 2	2022

JOB REFERENCES

Indoor Flooring installed and achieved in Hong Kong

Grantham Hospital	2024
Union Hospital	2024
New Acute Hospital at Kai Tak	2024
Queen Mary Hospital 1F Bridge	2024
Kwai Chung Hospital	2024
Pamela Youde Hospital	2023
Our Lady of Maryknoll Hospital	2023
Tin Shui Wai Hospital	2023
Haven of Hope Hospital	2023
Yau Ma Tei Clinic	2023
United Christian Hospital	2022
Ambulatory Care Centre at Queen Elizabeth Hospital	2022
Kowloon Hospital Ward 5A	2022
HKBU, Cha Chi Ming Science Tower	2021
Hong Kong Baptist Hospital	2021
Tuen Mun Hospital	2021
Redevelopment of Kwong Wah Hospital	2021
Precious Blood Hospital	2020
Shatin Hospital	2020
Kwun Tong Clinic	2020
Sanatorium Hospital	2020
Northern District Hospital & Tai Po Hospital	2018
Prince of Wales Hospital	2018
Kowloon Hospital Rehabilitation Building	2018
Tsuen Wan Adventist Hospital	2016
Tung Wah Group of Hospitals Fung Yiu King Hospital	2016
Tung Wah Eastern Hospital	2016

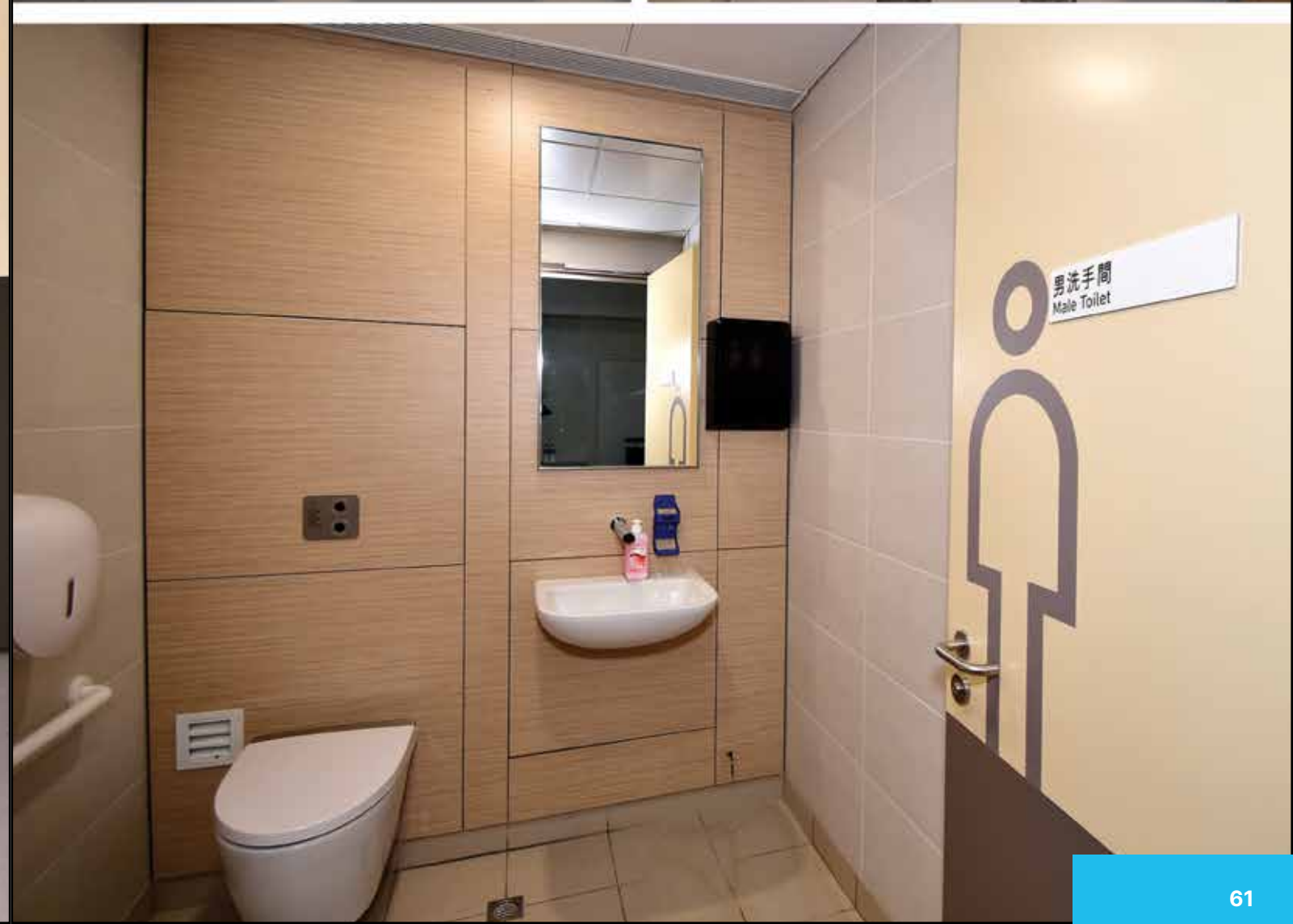
QUEEN MARY HOSPITAL

Pok Fu Lam Rd, Pok Fu Lam

IPS Wall Panel System

2021





LAM TIN TUNNEL

Tsuen Kwan O

IPS Wall Panel System

2023



EXPANSION OF HAVEN OF HOPE

Tsuen Kwan O

IPS Wall Panel System

2021





YAU MA TEI SPECIALIST CLINIC

Yau Ma Tei Specialist Clinic

IPS Wall Panel System

2020





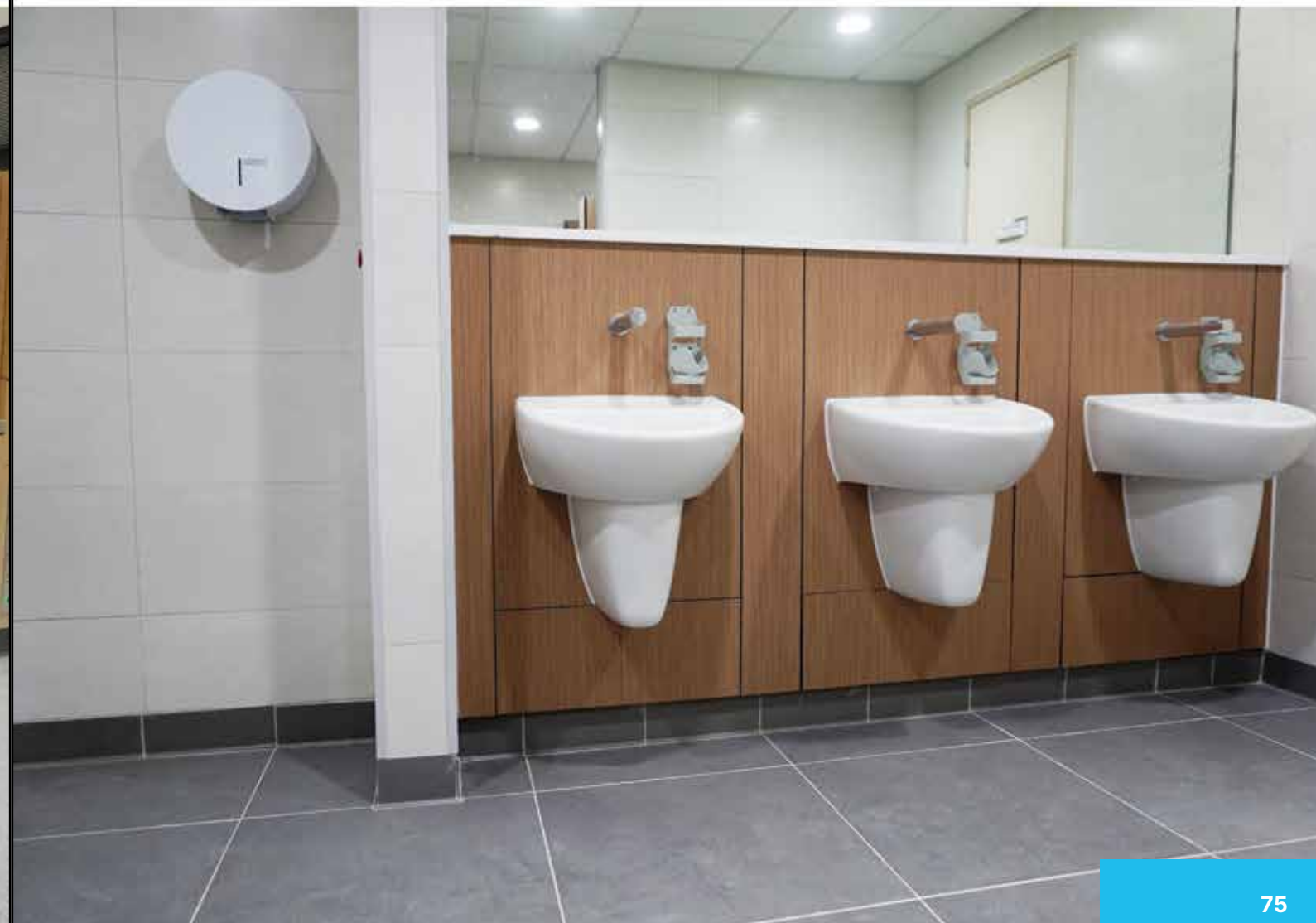
TIN SHUI WAI HOSPITAL

Tin Shui Wai

IPS Wall Panel System

2020



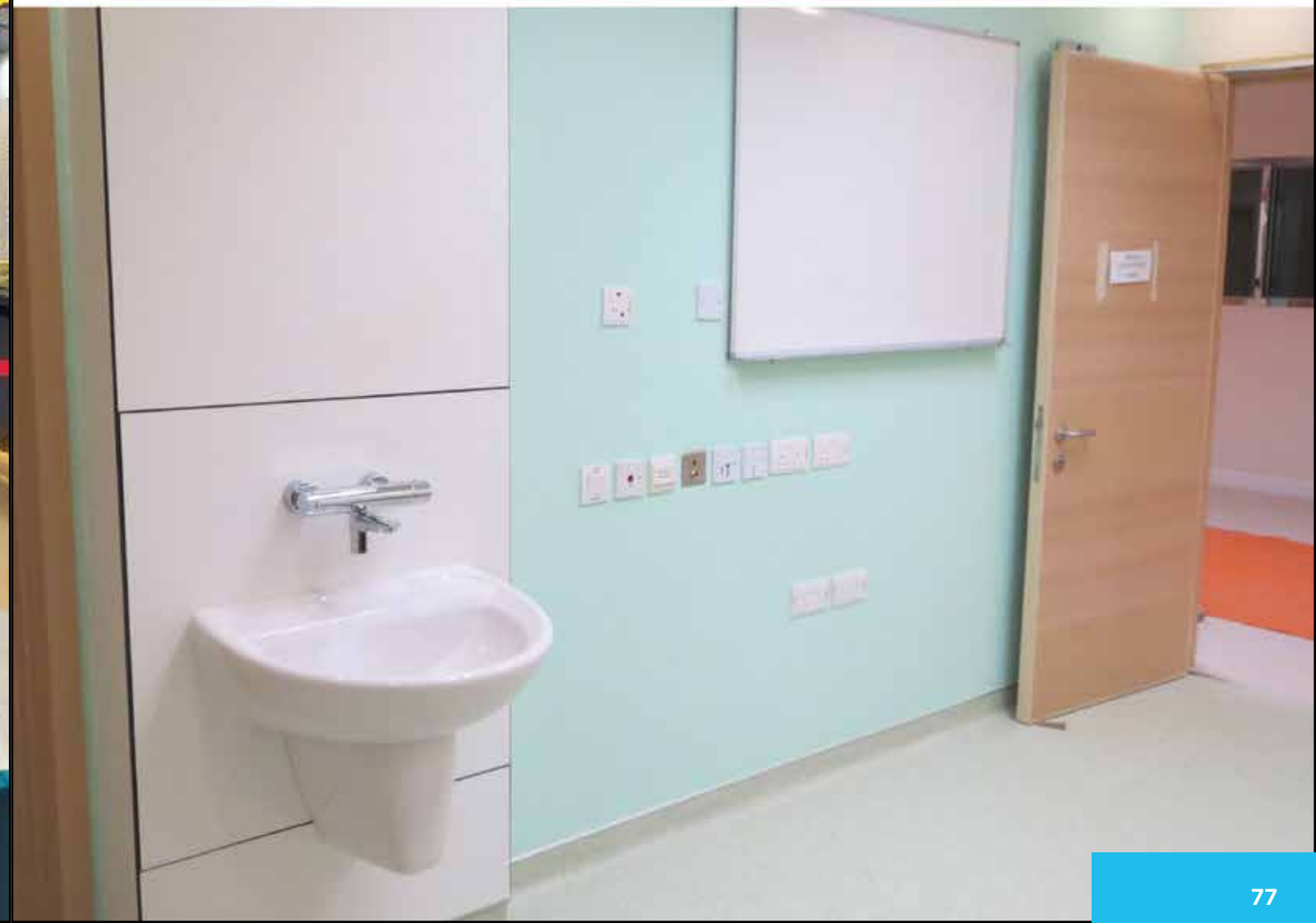


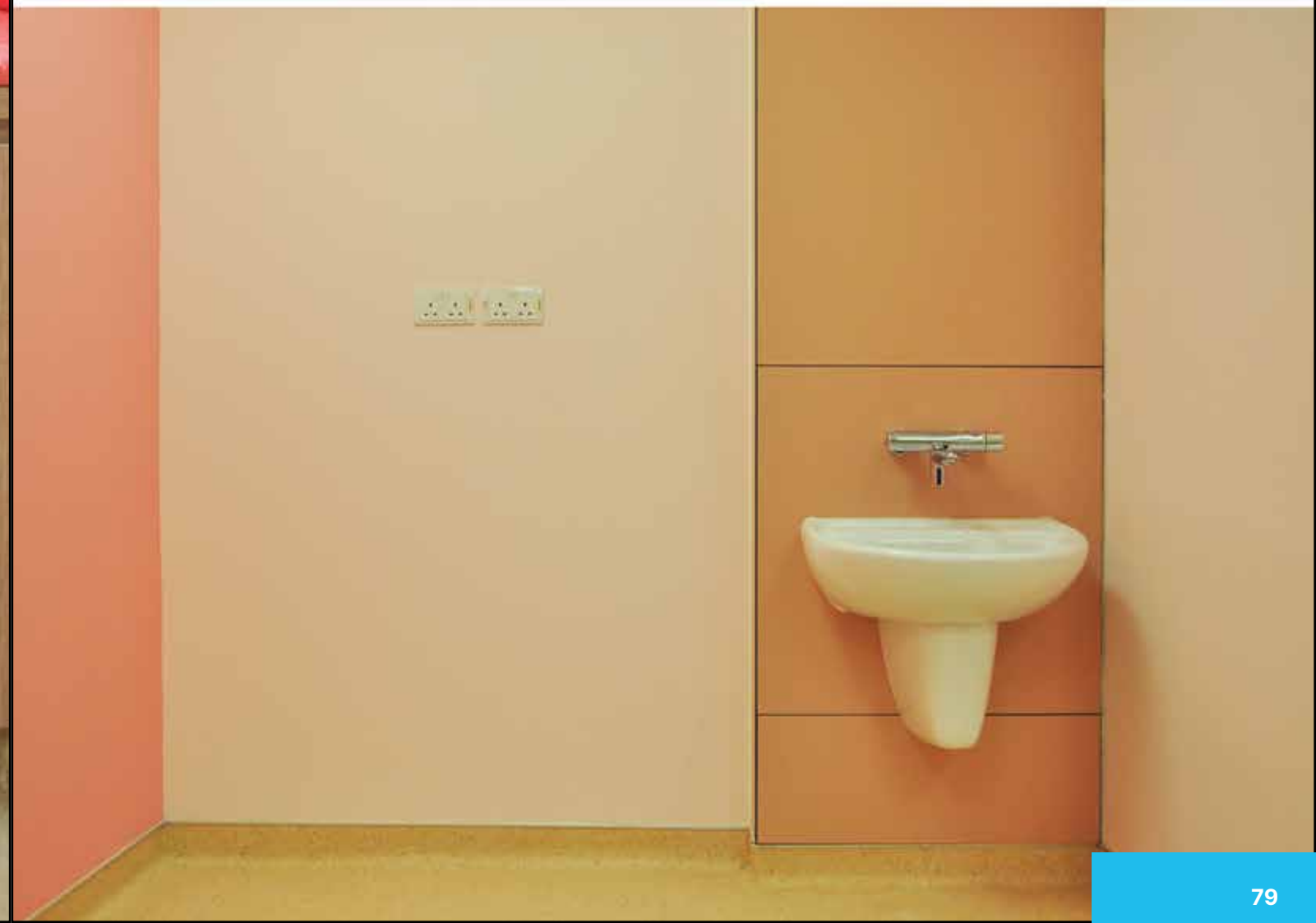
KWUN TONG CLINIC

60 Hip Wo St, Kwun Tong

IPS Wall Panel System

2018





SAFE &
HYGIENIC
SOLUTIONS

Genesis Development Limited

Unit D, 3/F, Wing Chai Building,
27 Ng Fong Street, San Po Kong,
Kowloon, Hong Kong

☎ 2503 1868

✉ info@genesis361.com.hk



FOR INQUIRIES