

**361°**

GENESIS

# CLUBHOUSE

## SOLUTION

### PROJECT SHOWCASE

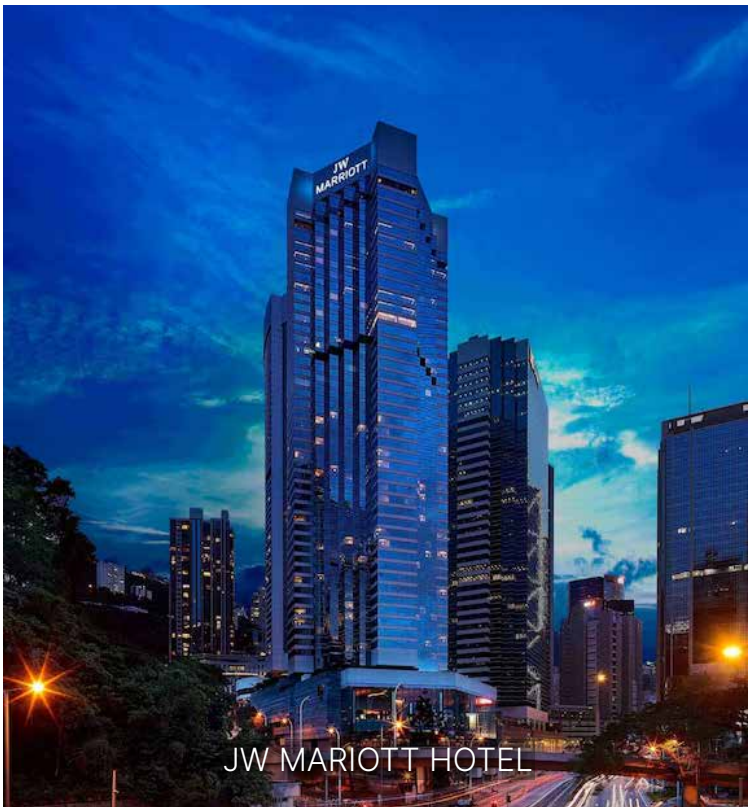
Lobby Area  
Locker Rooms  
Recreational Area  
Gym Room  
Child Playroom and more..

**Genesis Development Limited**

Toilet Cubicle Solutions | Locker & Bench Solutions | Wall Solutions | Designers Laminate Solutions  
Indoor Flooring Solutions | Outdoor Flooring Solutions



OUR ACHIEVEMENTS IN THE HOSPITALITY SECTOR





# What is Clubhouse Solution?

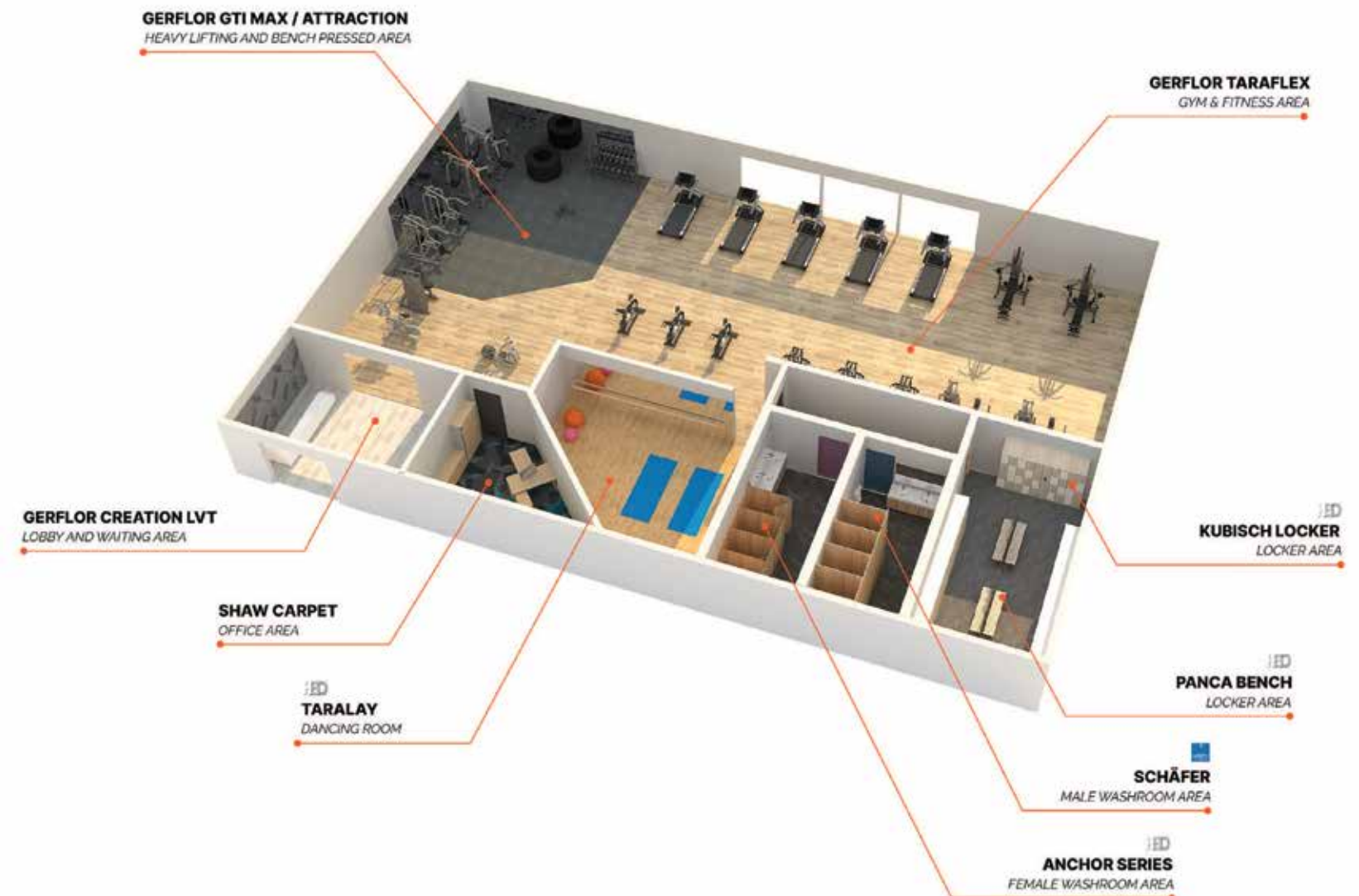
## How Genesis plays an important role?

Genesis play a crucial role in the development of luxury hotels, serving as the foundation for both aesthetics and functionality. They supply high-quality materials that enhance the visual appeal, from exquisite flooring and elegant facades to durable fixtures and finishes. These companies are integral in ensuring that the hotel's design meets the highest standards of luxury, sustainability, and safety.

By collaborating closely with architects and designers, Genesis can help bring visionary concepts to life, ensuring that the final structures are not only architecturally remarkable but also meet the highest standards of safety and functionality, ultimately contributing to an unforgettable guest experience.

## Your One Stop Solution for Luxury Hotels and Clubhouse Sector.

Toilet Cubicle Solutions  
Locker & Bench Solutions  
Wall Solutions  
Indoor Flooring Solutions  
Outdoor Flooring Solutions



# TOILET CUBICLE SOLUTIONS

A good characteristic of washrooms in hotels and clubhouses is their emphasis on cleanliness and accessibility. Well-maintained facilities that feature modern sanitation fixtures, ample space for movement, and thoughtful design enhance guest comfort and convenience. Additionally, adequate lighting and ventilation play a crucial role in creating a pleasant and hygienic environment, further elevating the overall experience for guests.

## CHARACTERISTICS OF **GOOD WASHROOM** ENVIRONMENT

### Smart Technology

TOUCHLESS features, Indoor Air quality control , Automatic monitoring of Paper and Soap Dispensers, temperature control, making the washroom hygienic, advanced and smart management efficient.

### Cleanliness

Easy-to-clean Anti-virus / Anti-bacterial surfaces and monitored regular maintenance to keep the cubicle hygienic.

### Durable Materials

Use of high-quality materials that resist wear and tear, Anti-virus and Anti-bacterial, moisture, impact resistant and anti-tainting.

### Emergency Features

Emergency Buttons, Radar Detection of Fall Alert systems for safety in case of emergencies.

### Privacy

Full-height partitions that prevent sight lines and ensure user comfort.







# THE HENDERSON

Schafer EF3 - Vento



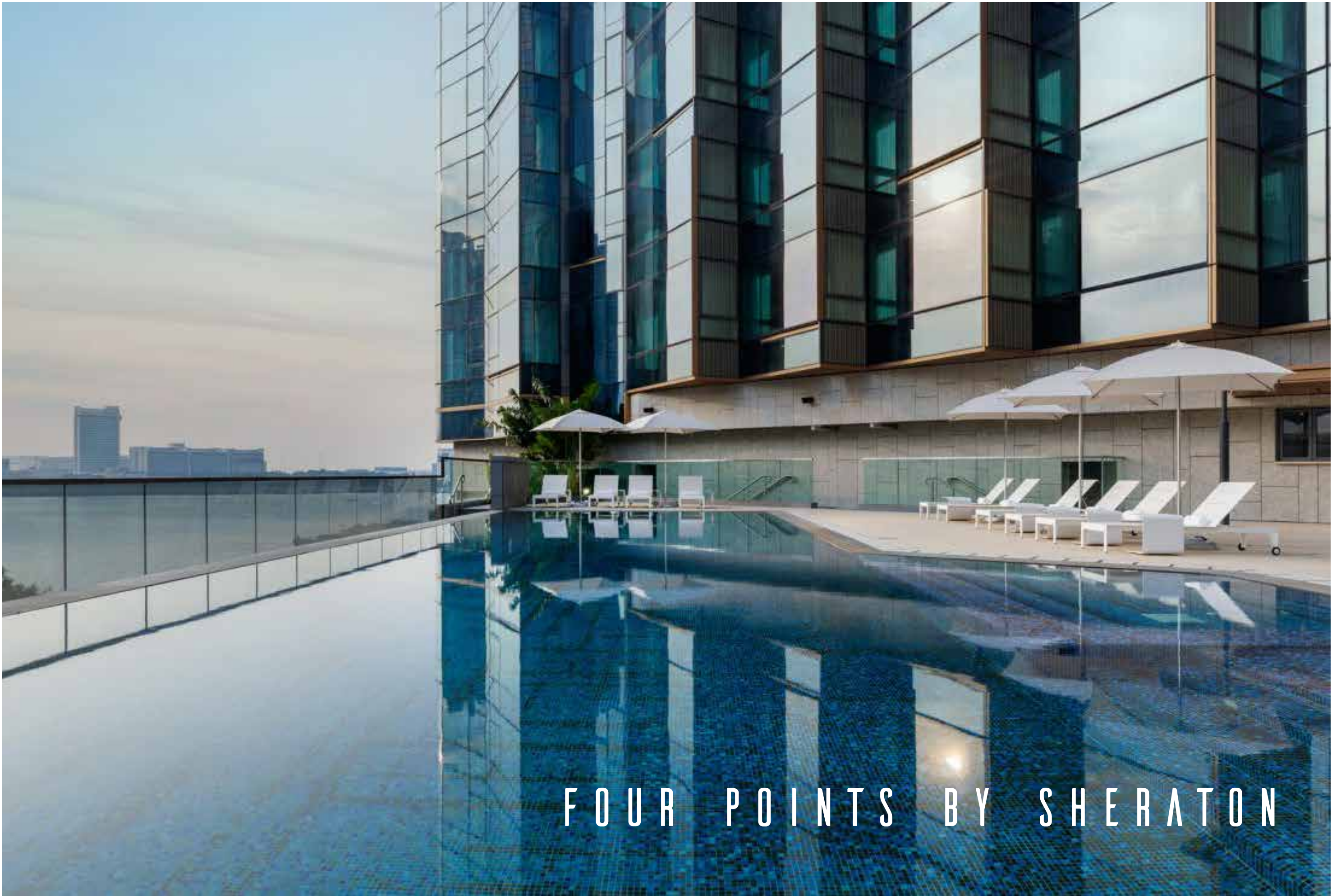


# THE HENDERSON

Schafer EF3 - Vento Luxury Glass







FOUR POINTS BY SHERATON





SHERATON HOTEL  
Lantau Island Hotel - Schafer EF3



# SHERATON HOTEL

Schafer EF3 - Style











PENINSULA HOTEL  
Schafer EF3 - Altus Full-Height







# THE AMERICAN CLUB

Schafer EF3 - Vento Luxury Glass











LOHAS PARK  
Schafer EF3 Jump - Floating Cubicle





# LOHAS PARK

Schäfer EF3 Jump - Floating Cubicle







German Product





# LADIES RECREATION CLUB

Schafer EF3 - Vento Luxury Glass







# THE ZUMURUD

Schafer EF3 ALTUS - FULL HEIGHT





THE ZUMURUD  
Schafer EF3 ALTUS - FULL HEIGHT





# THE HONG KONG COUNTRY CLUB











YEE KUK  
STREET





YEE KUK STREET  
Schafer EF3 - Style





# SANDS MACAO





SANDS MACAO  
Schafer EF3 - Style



# ZEROTOUCH 1.0

SMART TOUCHLESS TOILET CUBICLE SYSTEM



THE HENDERSON







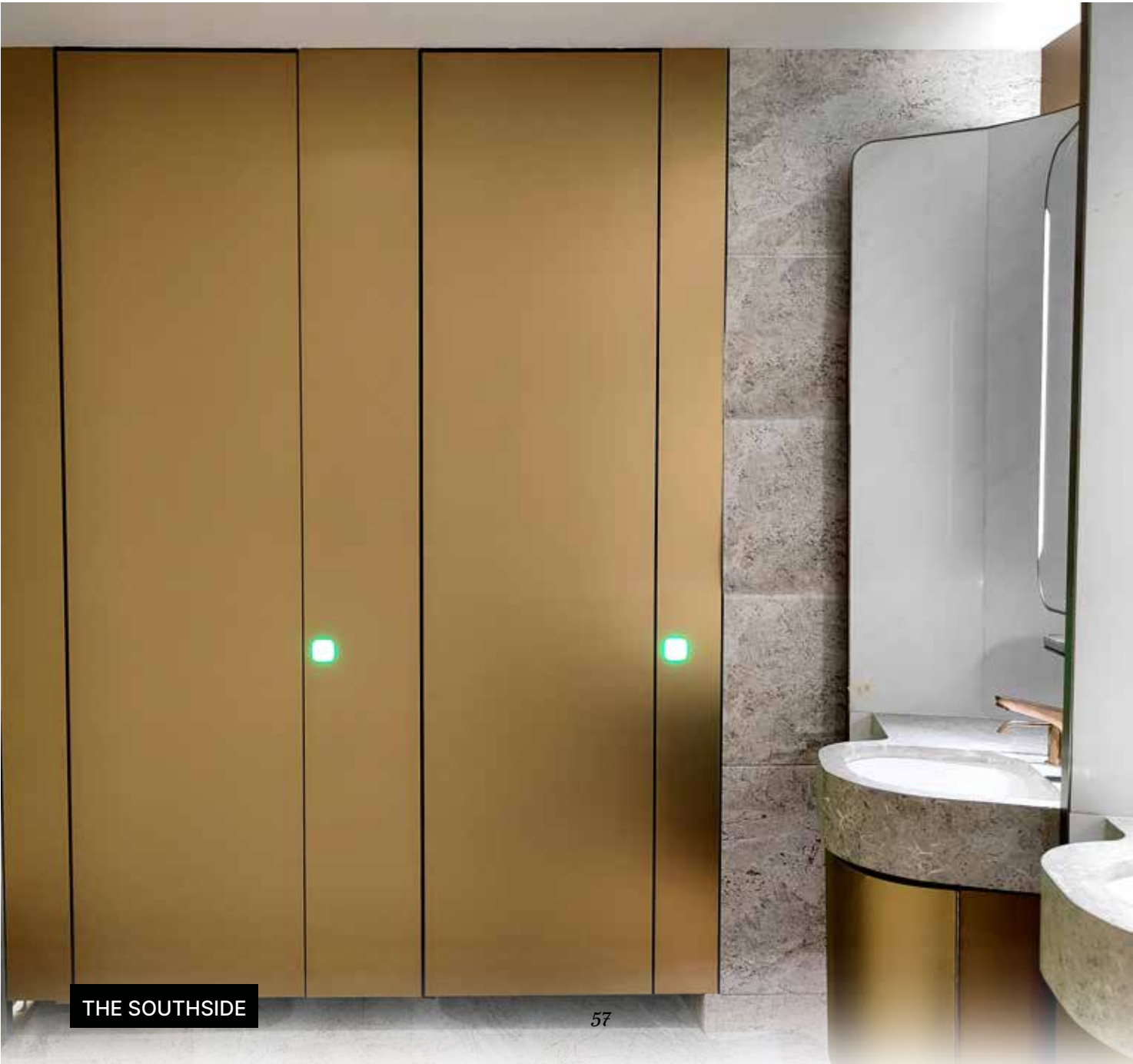
DORSET HOUSE



ICC



TWO TAIKOO PLACE



THE SOUTHSIDE



# ZEROTOUCH 2.0

TOUCHLESS + MANUAL OVERRIDE TOILET CUBICLE SYSTEM



## Touchless Function

**2nd Generation Sensor**  
Enhancing higher sensitivity and reacting time as well as avoiding environment interference.



## Manual Override Function

The user has always the flexibility to operate by manual lock.



# SMART WASHROOM SOLUTIONS





# SMART WASHROOM SOLUTIONS



## What are the benefits of Smart Washroom Solution?

### ENHANCE USER EXPERIENCE

- Enhanced washroom experience.
- Safe and comfortable environment.
- Improved cleanliness, neatness and hygiene condition inside the toilet.
- All in toilet appliances and facilities are available and operating in good condition.
- Pleasant environment with comfortable temperature, humidity, ventilation, air quality.
- No unpleasant odors.

### EFFICIENT MANAGEMENT SYSTEM

- Improving washroom management efficiency
- Detects fall incident.
- Save labor cost and minimize overstock of supplies (Soap, Toilet paper)
- Helps facility managers or property owners to improve the washroom service quality standards.
- Automates daily cleaning and emergency repairs management.
- Provide instant alert for emergency (Water leakage), reducing repair cost.
- Efficiently scheduled maintenance.
- Adds value to your property.

## ACCIDENT ALERT & SAFETY MANAGEMENT

- Motion Sensor can detect an area of 2 Sqm.
- Protects Privacy - Detect motions only, with no camera lens.
- Property Management will receive the alarm from the motion sensor to initiate a fast and quick rescue operation.



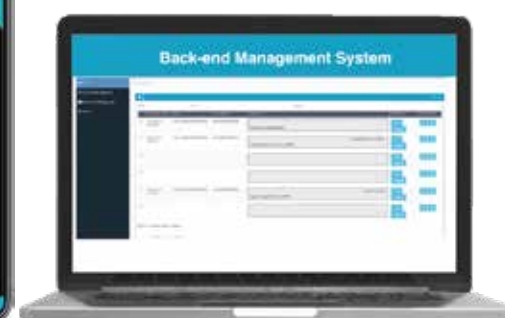
## BIG DATA ANALYSIS & CUSTOMER INTERACTION

- The system instructs workers and provides insight to management.
- Overall key performance indicators for toilet.
- Specific toilet performance metrics and comparisons.
- Receive notifications/task list from managers.

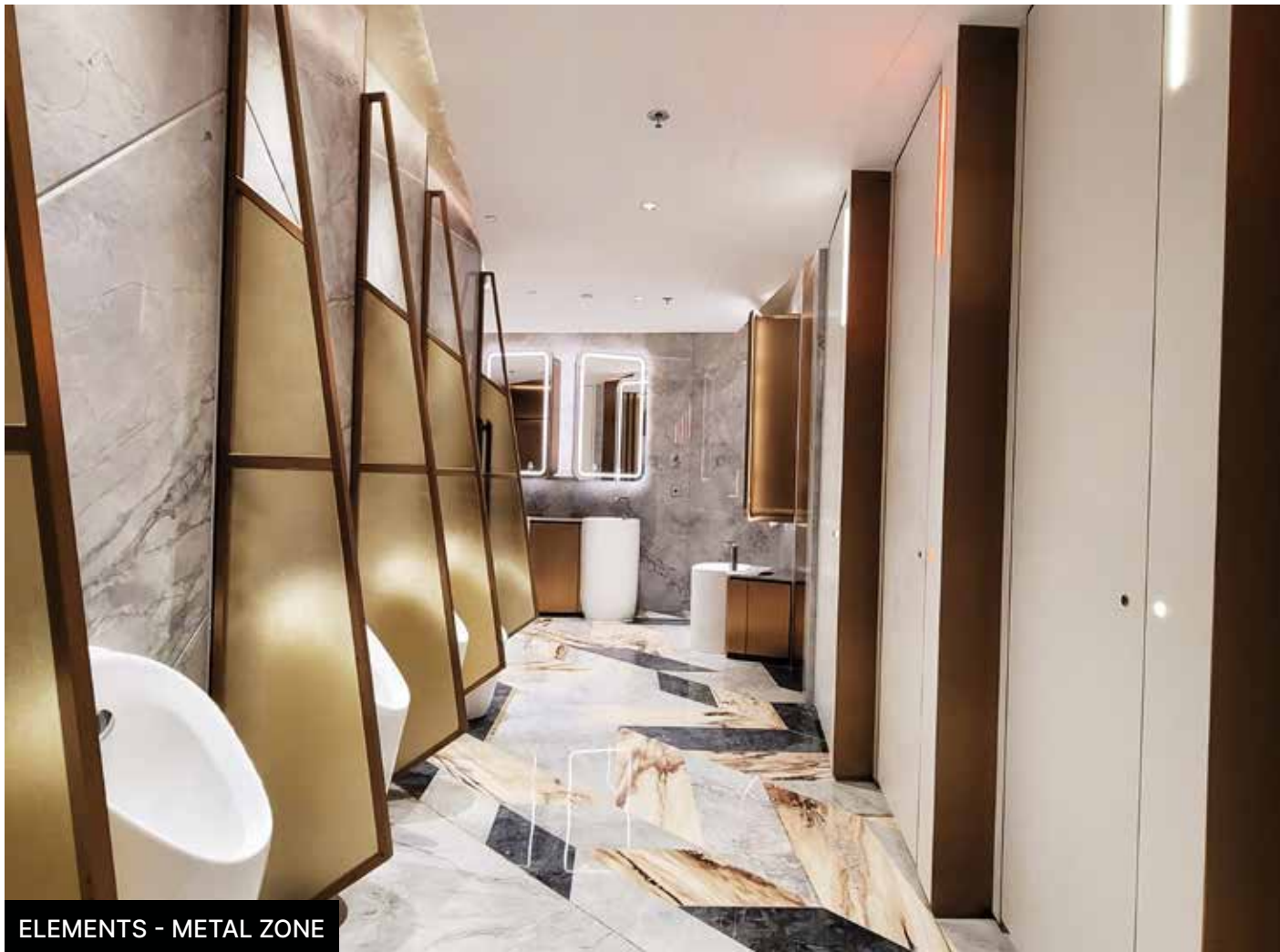


## DASHBOARD REPORTS & CLIENT INFORMATION DISPLAY

- Enables management to monitor occupancy, alerts, toilet supplies and manpower system.
- Auto-generated reports for property management platform & system.
- On-spot display of generated report and situation for the user.







ELEMENTS - METAL ZONE



ELEMENTS - WATER ZONE



ELEMENTS - FIRE ZONE





# SMART LOCKER SOLUTION

Lockers in luxury hotels and clubhouses serve as a seamless blend of functionality and sophistication, enhancing the guest experience by providing a secure and stylish space to store personal belongings. Elegantly designed, they complement the upscale ambiance, fostering a sense of exclusivity and comfort, while also making it easy for visitors to transition between various amenities, from the spa to the fitness center or poolside, with ease and elegance.

## CHARACTERISTICS OF **GOOD LOCKER** ENVIRONMENT

### Security Features

Keypad locks, RFID's or biometric access for enhanced security with durable materials that resist tampering or forced entry.

### Durability

Made from strong compact laminate high-quality materials , Impact resistant, anti-corosion, to withstand daily use Easy-to-clean surfaces resistant to germs and bacteria.

### User-Friendly Design

Intuitive locking mechanisms like digital locks, Rfid, keypads and Accessibility for all users, including those with disabilities

### Smart Features

Features like built-in charging stations for electronic devices. Managing Lockers using One Central Unit operation. Hooks, shelves, or compartments for better organization and features that protect users' belongings without shared access.

### Monitoring & Reporting

Systems that track usage patterns and locker availability Alerts or notifications for management purposes, improving efficiency.





HONG KONG  
GOLD COAST HOTEL

LOCKER & BENCH





HONG KONG  
GOLD COAST  
HED Kubisch Locker with Digital Lock





KAI TAK  
CLUB VICTORIA

LOCKER & BENCH





# CLUB VICTORIA

HED Kubisch Locker with Digital Lock











**J W M A R I O T T**  
HED Kubisch Locker with Digital Lock









# YMCA HOTEL

HED Kubisch Locker with Cam Lock







# HONG KONG TMIL CLUBHOUSE

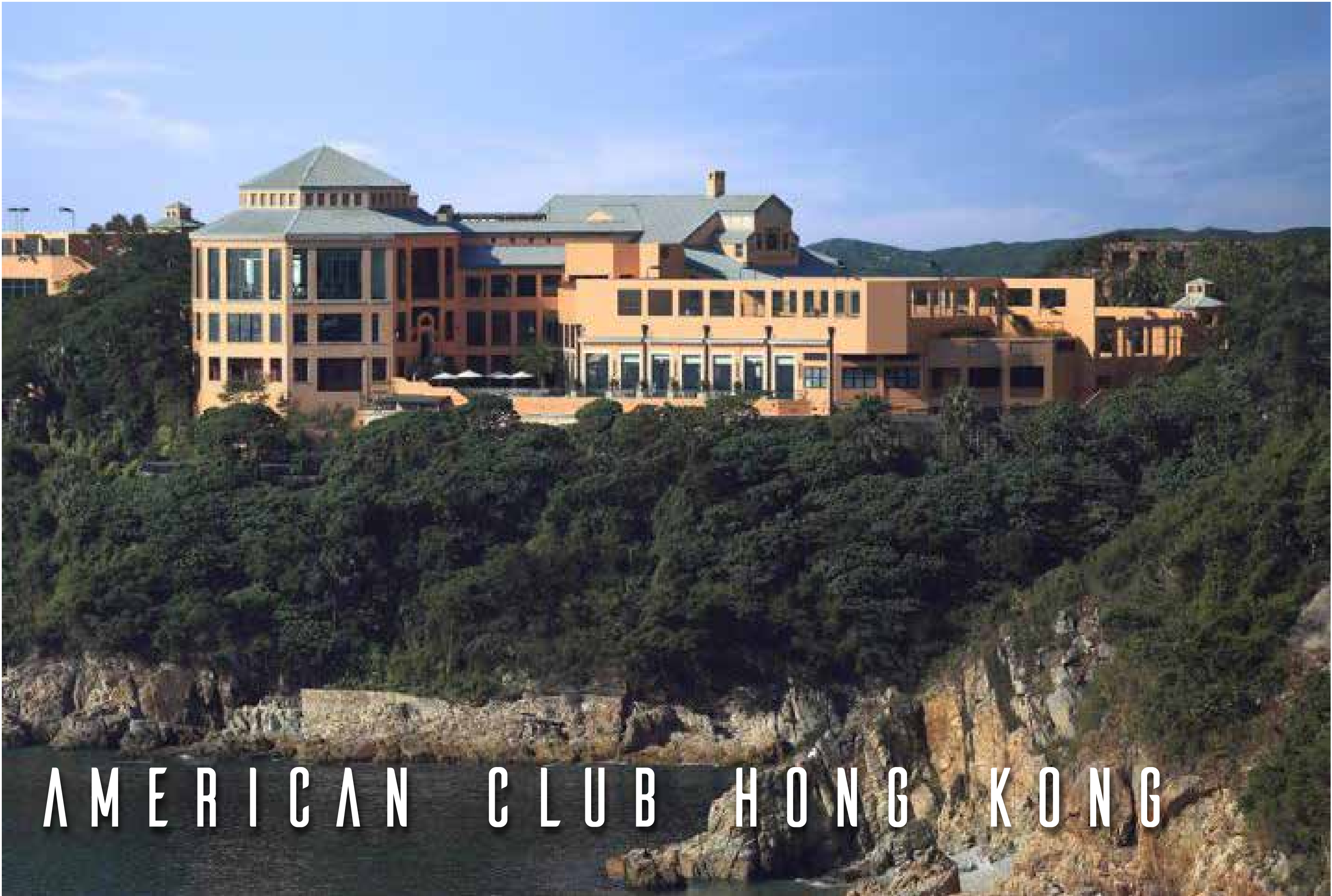




# TMIL CLUBHOUSE

HED Kubisch Wood with Digital RFID Lock







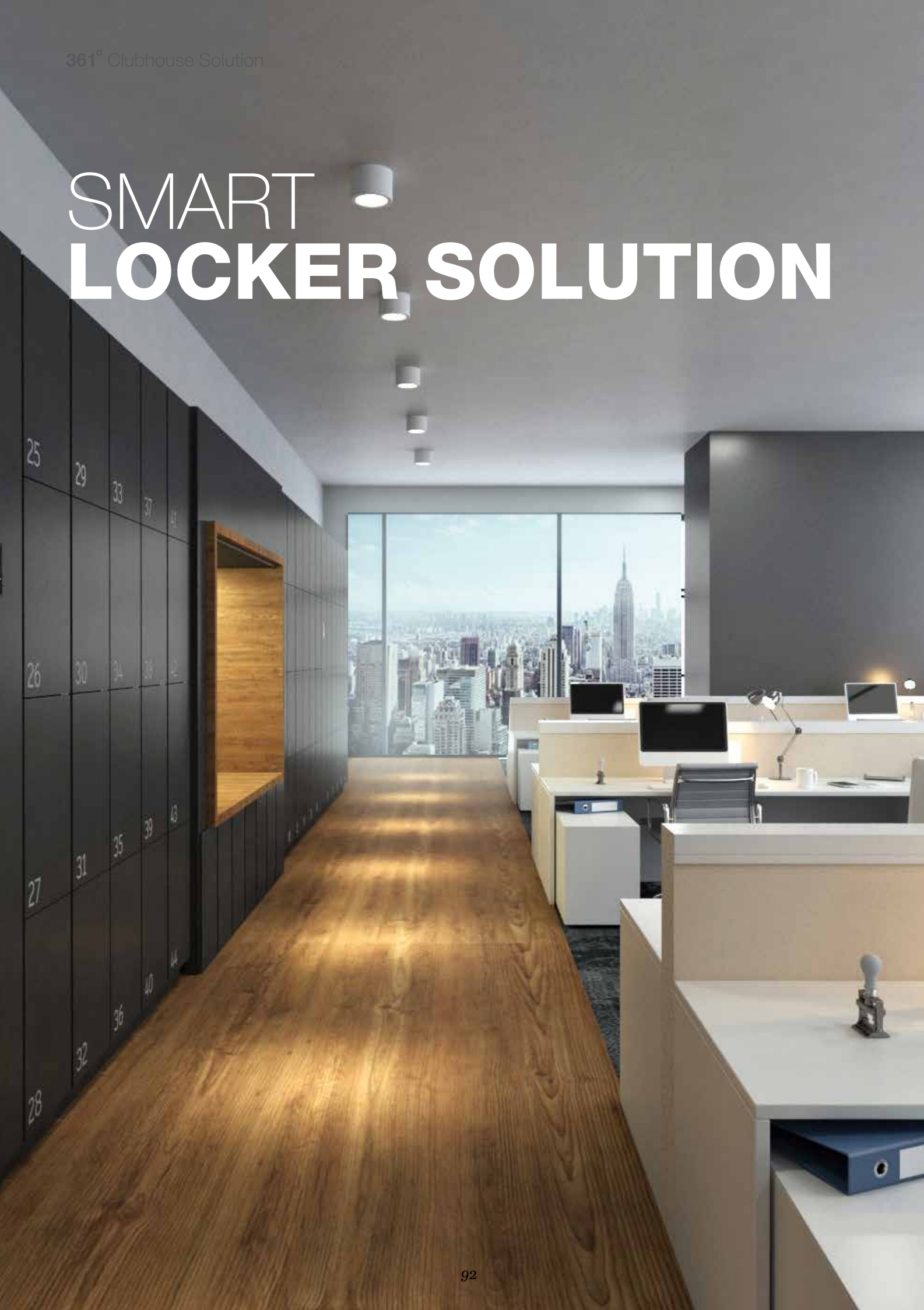


AMERICAN CLUB HK

HED Kubisch Locker with Digital Lock



# SMART LOCKER SOLUTION



TWO IFC





# SMART LOCKER SOLUTION



## Back-End Management System

- Can access to lock and unlock the users locker
- Can see the locker's history, reports of usage, date and time.
- Access anytime, anywhere via Laptop, Tablet or Mobile Phone.
- Can void users card.

## GIOT Locker App



### Features

- Send temporary passcode/ekey remotely
- Manage passcode, ekey
- View access logs
- Open the lock by app remotely or nearby.
- Passage mode setting
- Get the unlock records
- Send temporary password
- Time attendance.



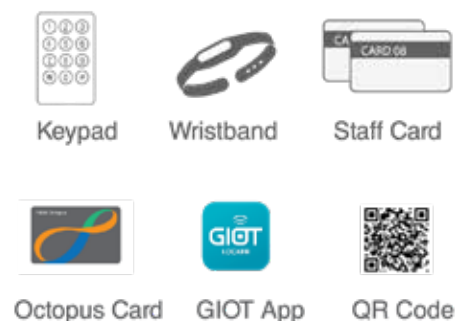
## 1. STAND ALONE : OFFLINE/ONLINE

Using the Wristband, RFID Cards can fully access the locker by offline mode or online for secure storage flexible and easy to use. Can also charge gadgets inside the locker.



## 2. SMART CENTRAL UNIT

- Locking system with central control unit:
- A set of lockers can manage and access using one Locking device reader.
- RFID system
- Back-end Management system (register,void,report)





# ABET LAMINATI

LATEST ABET RANGE



## Polaris

Polaris is a material with unique characteristics starting from the general feeling of deep, soft touch and full surface. The colour is 'melting', conveying a feeling of depth. Dense and Elegant.



## Metalli

The elegance of a satin finish or the brilliance of precious metal. Finishes suitable for metal-inspired decors such as Satin and Morbida create a feeling of sophistication and elegance, showcasing the uniqueness of Metalli Series decors.



## Mare Nostrum

Matteo Ragni /  
Our Sea Collection

Mare Nostrum is a collection of decors that celebrates the sea, a symbol of vitality and biodiversity.



## Velwood

The new Velwood finish skillfully combines the tactile feel of velvet with the depth of natural wood.







Greenlam earns EPD certification, affirming eco-responsibility, quality, and support or sustainability.

99.99%  
VIRUS FREE



Greenlam is high pressure and high temperature composed material with transparent overlay for scratch resistance, European decor paper and underlay. Decor paper is melamine impregnated and kraft paper with phenolic resin. Complying to the below standard for Plastic laminates.

**FEATURES:**

- ▶ **ANTIBACTERIAL**  
TESTED 9 BACTERIA & FUNGUS
- ▶ **RESISTANCE TO SURFACE ABRASION & SCRATCH**
- ▶ **ANTI-CIGARETTE BURN**
- ▶ **RESISTANCE TO MOISTURE**

- |                           |                          |
|---------------------------|--------------------------|
| 1. Pseudomonas Aeruginosa | 6. Klebsiella Pneumoniae |
| 2. Enterococcus Faecalis  | 7. MRSA                  |
| 3. Candida Albicans       | 8. Salmonella Enterica   |
| 4. Pseudomonas Aeruginosa | 9. Candida albicans ATCC |
| 5. Escherichia Coli       |                          |



**ANTI-VIRUS TEST**

ISO 21702 is one of the most commonly requested antiviral surface test methods for evaluating the antimicrobial activity of antiviral-treated plastic and non-porous products.

**ANTI-BACTERIA TEST**

The JIS Z 2801 method tests the ability of plastics, metals, ceramics and other antimicrobial surfaces to inhibit the growth of microorganisms or kill them.

**FUNGUS RESISTANCE TEST**

This practice covers determination of the effect of fungi on the properties of synthetic polymeric materials in the form of molded and fabricated articles, tubes, rods, sheets, and film materials.



# WALL PANEL SOLUTION

A high-quality wall protective solution for clubhouse and luxury hotels offers numerous advantages that enhance both functionality and aesthetics. These solutions are designed to be durable, resistant to impacts, stains, and everyday wear, ensuring long-lasting protection that maintains the integrity of walls.

## CHARACTERISTICS OF GOOD WALL PANELS

### Durability

Able to withstand impacts, abrasions, and general wear and tear, ensuring long-lasting performance.

### Impact Resistance

Protects walls from unintended impacts, such as those from carts, equipment, and foot traffic.

### Non-Toxic Materials

Made from safe, non-harmful materials that contribute to healthier indoor air quality.

### Sound Absorption

Helps reduce noise levels and improve acoustic comfort within the space.

### Aesthetic Appeal

Available in various colors, patterns, and finishes to match the interior design and enhance the overall appearance of the space.

### Easy Installations

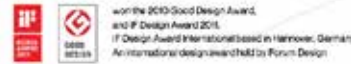
Systems that track usage patterns and locker availability Alerts or notifications for management purposes, improving efficiency.



# WPS

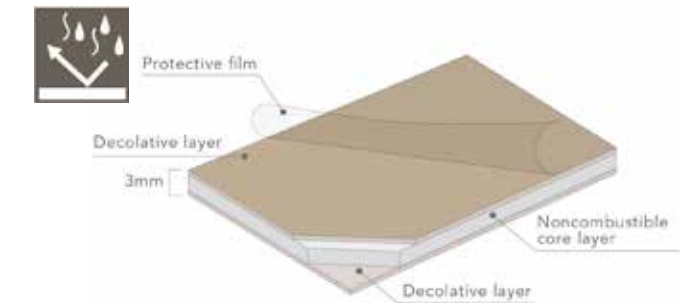
## WALL PANEL SYSTEM

- Non-Combustible Decorative Panels
- Water-Resistance
- Supports the creation of clean spaces with antibacterial feature\* (product registered with SIAA).



### HEAT & HUMIDITY RESISTANT

No discoloration when splashed with hot water. Not even cigarette stains stick.



### EXTREME HYGIENIC

Maintains cleanliness by inhibiting the growth of bacteria. Also suitable for bath and toilet areas.



### EASY TO CURVE

Clean and smooth.



### INDOOR AIR QUALITY FEATURE

Helps purify and maintain good air quality, preventing bad smell inside.









# INDOOR FLOORING SOLUTION

Selecting the right flooring for office and commercial spaces involves considering the specific needs of the environment, including factors like durability, maintenance, aesthetics, and comfort. Each of these flooring types—vinyl, carpets, and heavy-duty tiles—offers unique characteristics that can enhance the functionality and appeal of a space.

## CHARACTERISTICS OF **GOOD INDOOR FLOORING**

### **Durability**

Designed to withstand heavy foot traffic, highly resistant to wear and tear making them ideal for commercial use.

### **Hygienic**

Surfaces treatment Solutions like Evercare, PUR+, Protect shield Surfaces to achieved Anti-Virus/Anti-Bacterial features and prevent the spread of germs.

### **Comfort**

Soft underfoot, providing warmth and comfort in office environments. Offers a softer surface underfoot compared to harder flooring types.

### **Slip-Resistance**

Heavy-duty tiles come with a textured finish, Dense concentration of deep inlaid anti-slip particles throughout the wear layer improving safety in busy areas.

### **Heavy Traffic Duty**

Suitable for various environments, from lobbies to break rooms, adapting to diverse design needs. Requires minimal upkeep compared to other flooring types; resistant to scratches and dents.

### **Easy Installations**

Systems that track usage patterns and locker availability Alerts or notifications for management purposes, improving efficiency.



## LUXURY VINYL TILE

LOOSELAY TILES DESIGNED FOR HEAVY TRAFFIC ENVIRONMENT

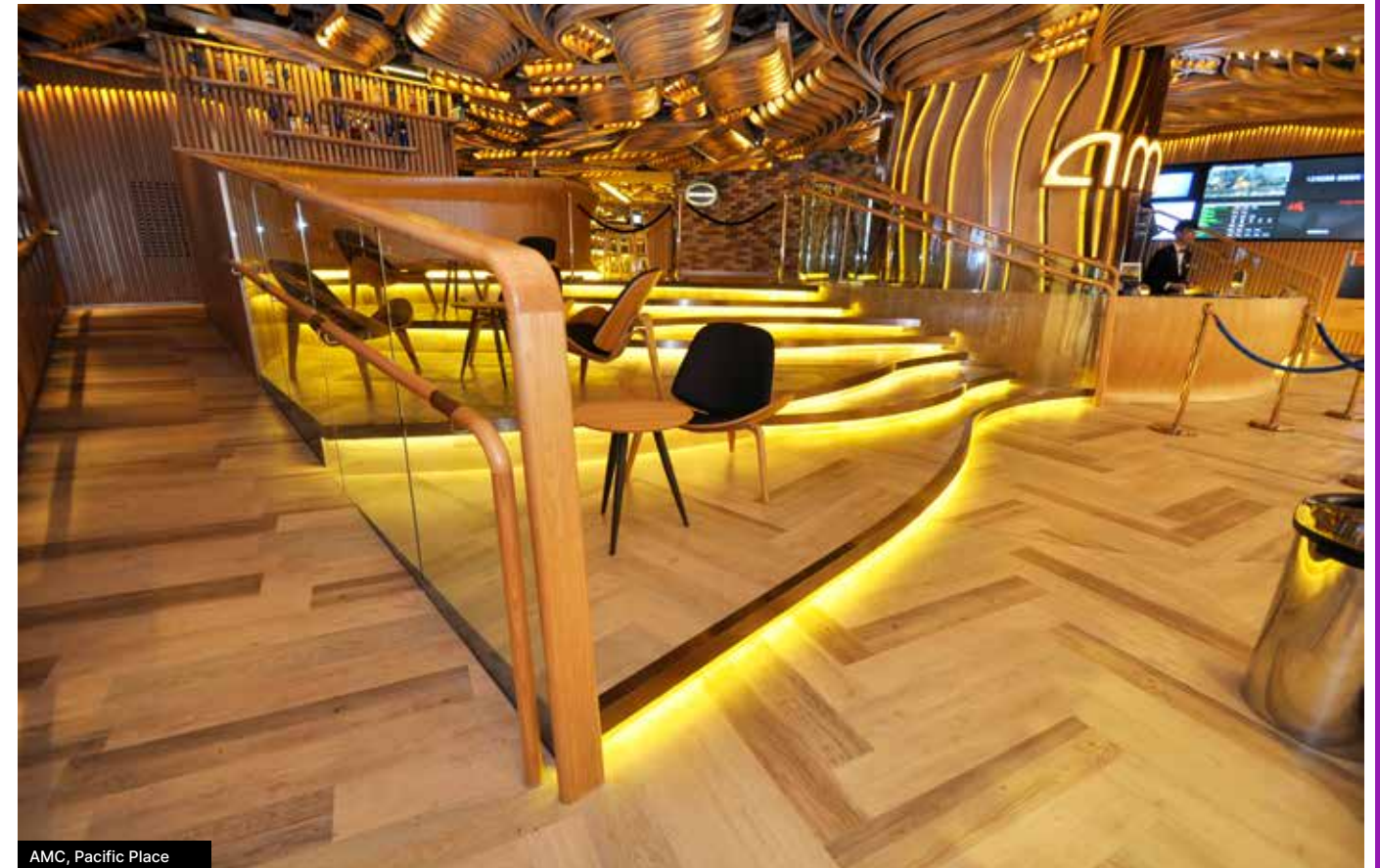


## CREATION

CREATION 30 | CREATION 55 |  
CREATION 70 SAGA



Protecshield™ Treatment



AMC, Pacific Place



Two Taikoo Place





# OFFICE / RECEPTION AREA

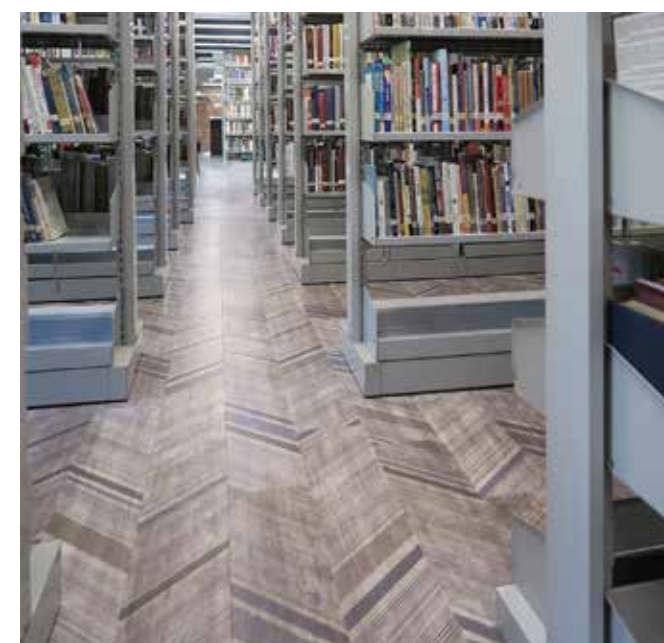
Gerflor



ERM OFFICE



EVANGEL SEMINARY - MEIFOO



Wall Application



Wall Application

TWO TAIKOO PLACE





PENTA HOTEL

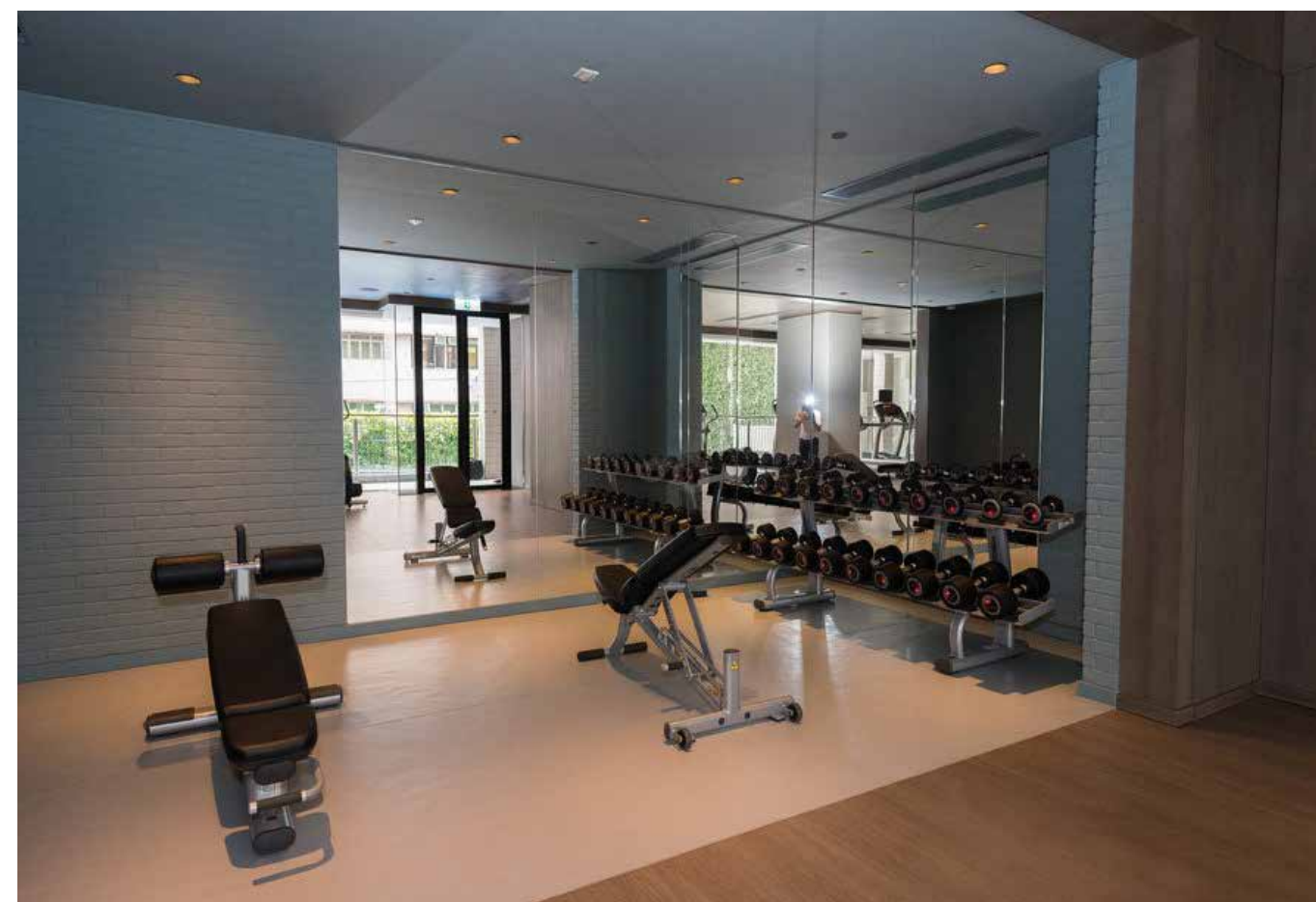


## GYM AREA



# PENTA HOTEL

Taraflex Sport M Evolution







C U H K



## GYM AREA



C U H K

Taraflex Sport M Evolution



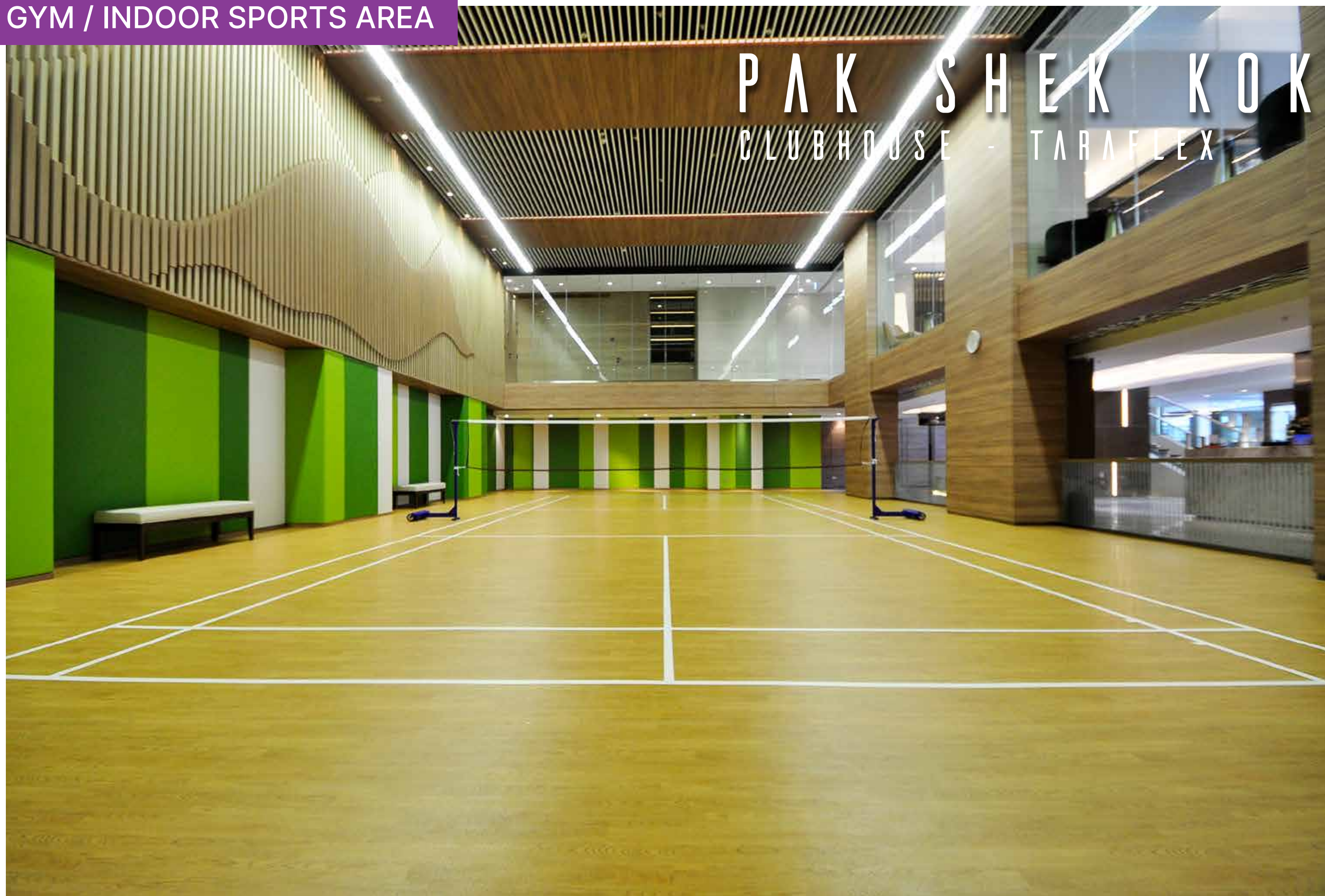




PAK SHEK KOK  
CLUBHOUSE



## GYM / INDOOR SPORTS AREA



PAK SHEK KOK  
CLUBHOUSE - TARAFLEX



# INTERLOCKING TILES

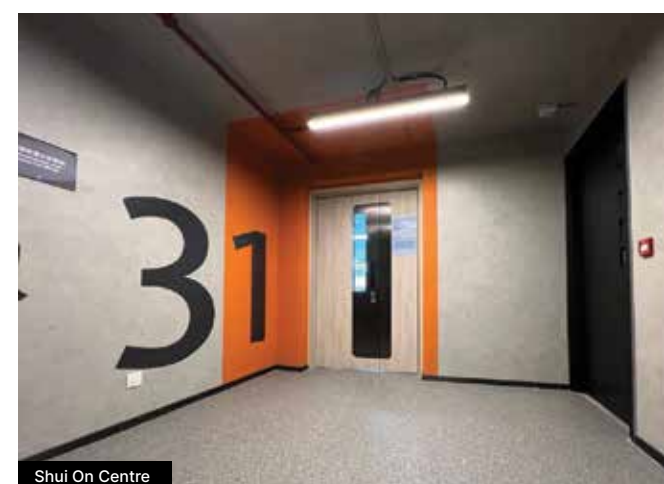
THE BEST HEAVY TRAFFIC FLOORING SOLUTION



## GTI MAX & ATTRACTION

BACK-OF-HOUSE / SERVICE AREA /  
STORAGE ROOM

### FAST & EASY INSTALLATION



### SAFE, QUIET & COMFORTABLE



**19 dB Less Noise**  
Underfoot comfort: reduces fatigue



**4 x Less Hazardous**



**Slip Resistant**



**Heavy Traffic Resistance**  
Dynamic Load: up to 6000 kg\*  
Static load: up to 50 kg/cm<sup>2</sup>

### EXTREMELY HARDWEARING

**WEARLAYERS:** GTI MAX - 2 mm  
GTI Attraction - 1 mm



Tiles Double Pressed  
at Over 3000 T



### EASY INSTALLATION ON ANY SURFACE

No need to stop work

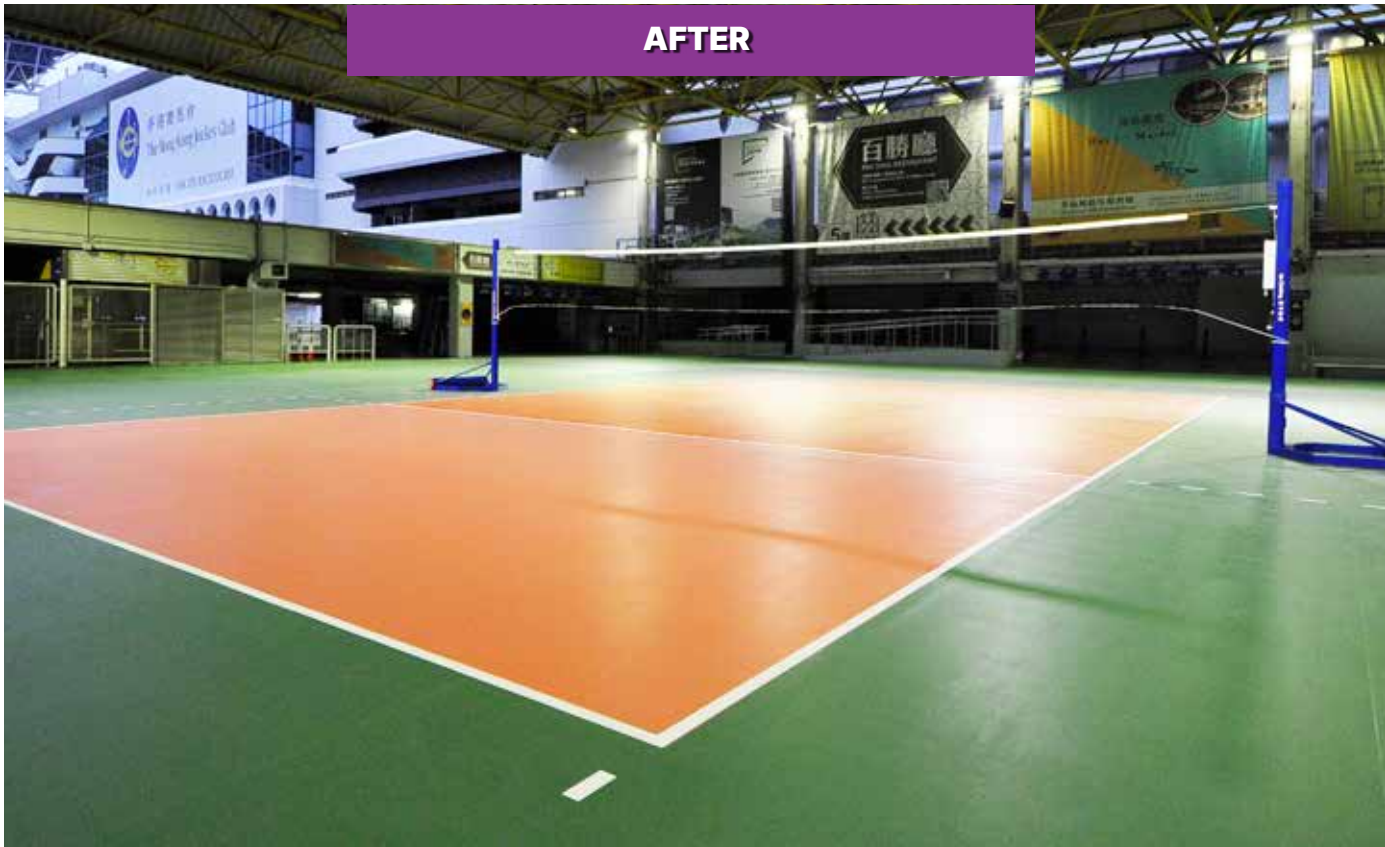








BACK-OF-HOUSE



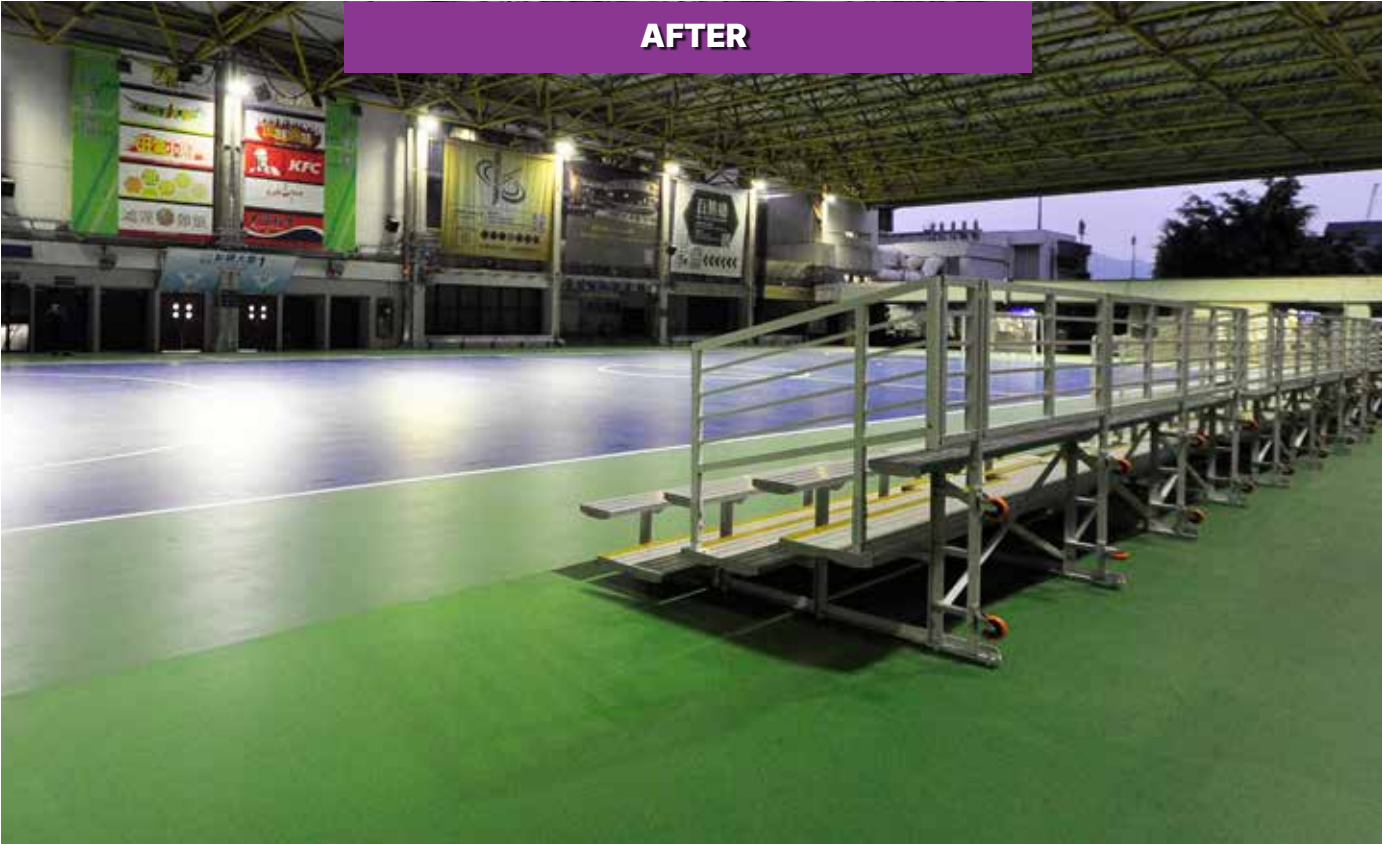
H K J C S H A T I N R A C E C O A R S E

GERFLOR - GTI MAX



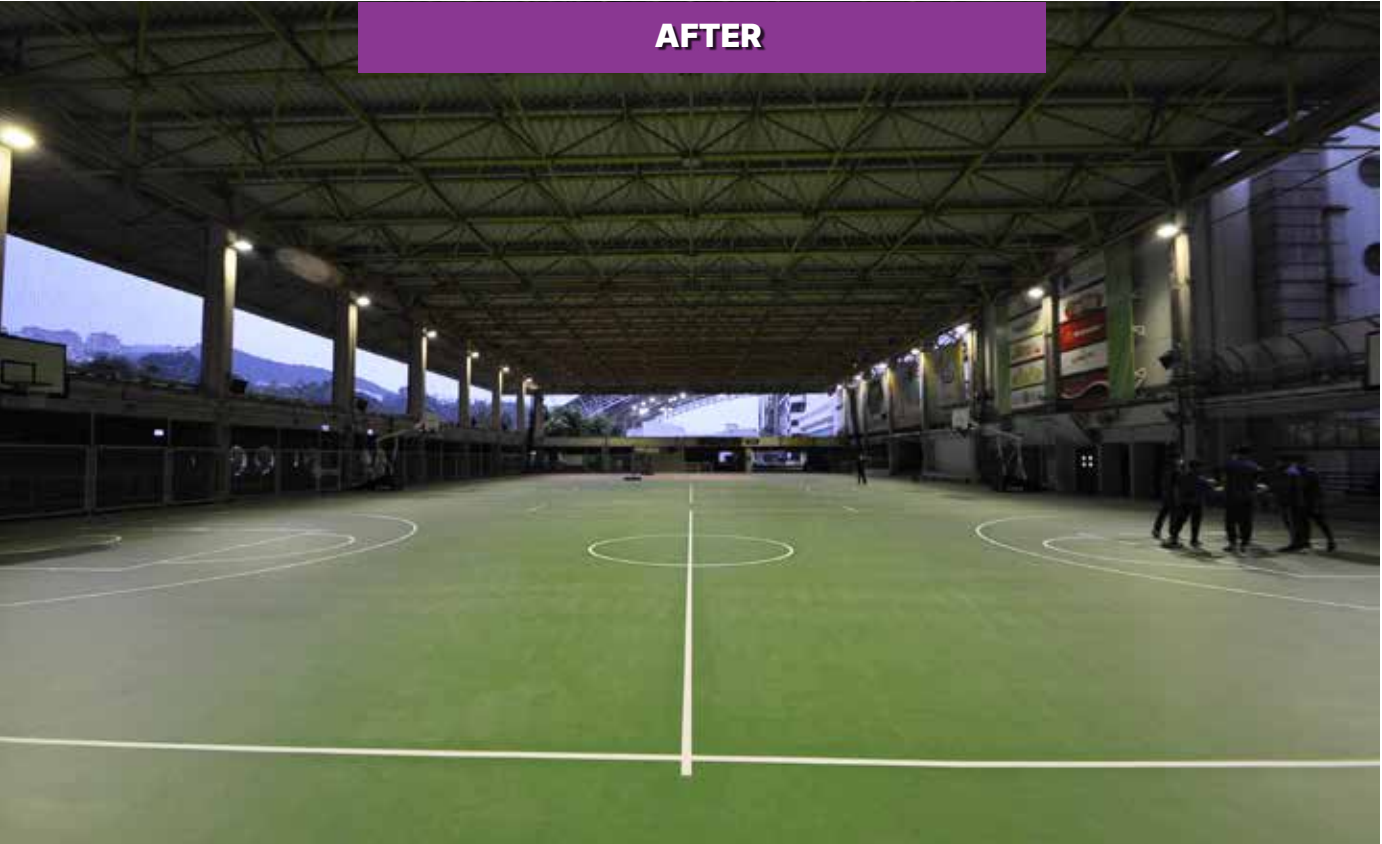


BACK-OF-HOUSE



HKJC SHATIN RACECOURSE

GERFLOR - GTI MAX





## BACK-OF-HOUSE





BACK-OF-HOUSE



HAPPY VALLEY CLUBHOUSE

GERFLOR - GTI MAX





BACK-OF-HOUSE



HAPPY VALLEY CLUBHOUSE

GERFLOR - GTI MAX





## GYM AREA



LES SAISONS  
CLUBHOUSE





LES SAISON

GTI Max



## LOBBY / RECEPTION AREA

# LVT / SPC

FOR COMMERCIAL INDOOR SPACES

ArmstrongFlooring™



AMC, Pacific Place



WATERPROOF



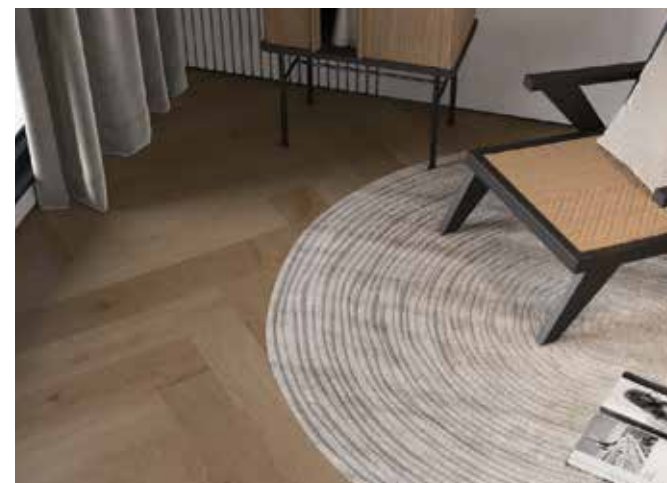
Armstrong



# LOBBY / RECEPTION AREA

# TITAN

OFFICE INDOOR FLOORING



## 99% ANTIBACTERIA

Antibacterial coating and stain-resistant, easy to clean.



## ANTI-STAIN AND WEAR-RESISTANT

Enhances floor stability and improves floor elasticity.



## WPC CLEAN ELASTIC FLOOR

Ultra-thick WPC layer ensures the floor is stable and not easily deformed.



Easy to Install

## WATERPROOF & MOISTURE-PROOF

Moisture-proof and irritating, and comfortable on the feet.





## CORRIDOR AREA

# CARPET TILE

FOR COMMERCIAL INDOOR SPACES

ArmstrongFlooring™



### PRO-CARE FIBER NYLON



# DESIGN IN MOTION



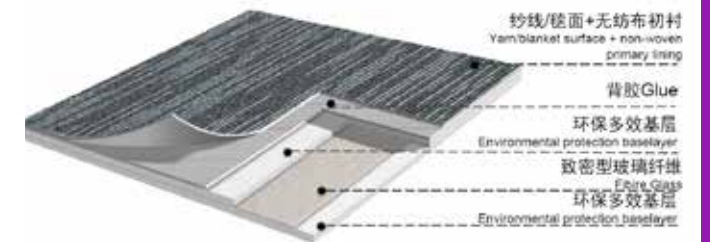
### STRONG WEAR RESISTANCE

Advanced protective and antistatic treatment, which ensure the excellent performance and strong wear resistance of each fiber.



### PRO-CARE FIBER NYLON

Best collection of solution dyed nylon fiber within top international brands. Rich in color and easy to clean, It's colorfast with high color fastness



### 5 ELEMENTS WITH STYLES

5 Elements is a fivefold conceptual scheme that many traditional Eastern fields used to explain a wide array of phenomena. The elements include gold, wood, water, fire, and soil. In fact, the five elements are particularly emphasized in the interior.



### INDOOR AIR QUALITY

CRI Green Label Plus grade A  $\leq 0.500\text{mg}/\text{m}^2\text{h}$

### COLOR CONTOURS & DESIGN VARIETIES

A rich variety of 36 colors, as matched per different directions and colors, shall form varied floor performances.





# OUTDOOR FLOORING SOLUTION

Good outdoor decking flooring in the luxury hotels and clubhouse sector serves as a vital extension of exterior spaces, seamlessly bridging the gap between the outdoors and nature. A well-designed outdoor deck enhances aesthetics and functionality, creating inviting environments for employees and clients to connect and collaborate.

## CHARACTERISTICS OF **GOOD OUTDOOR FLOORING**

### **Durability**

Outdoor flooring that is designed to withstand the elements, making it resistant to cracking, fading, splintering, and warping.

### **UV Resistance**

PC materials are often treated to resist UV rays, preventing fading and ensuring the color lasts longer in sunlight.

### **Resistant to Insects**

Outdoor Flooring the has anti-termite damage. WPC is not prone to damage from termites or other wood-boring insects.

### **Slip-Resistance**

Designed with textured surfaces, providing better traction and reducing the risk of slips and falls.

### **Weather Resistance**

WPC is inherently resistant to moisture and humidity, which makes it suitable for outdoor settings and areas with high foot traffic.

### **Easy Installations**

Outdoor flooring solution that come with straightforward installation methods (such as interlocking or clip systems), reducing labor costs and installation time.





MAEDAKOSEN

Kankyo-wood II

# WOOD PLASTIC COMPOSITE

OUTDOOR DECKING



Japanese ECO-mark Certification



DECKING

1

The Pier Hotel, Sai Kung



BENCH

2

Au Tau, Yuen Long



LOUVER

3

MTR Hin Keng Station



BALCONY

4

## TERMITE FUNGUS FREE

No bacteria ,Terminate damage or corrosion



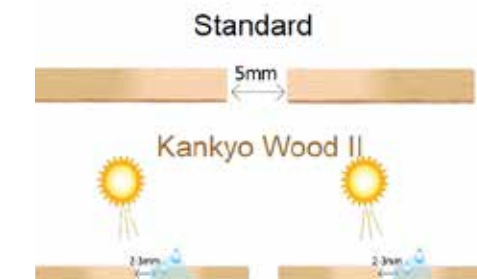
Natural Deck Wood



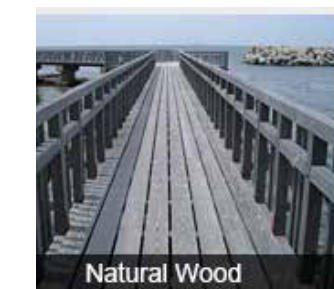
Kankyo-wood II

## CONTRACTION & EXPANSION

The WPC has the Lower contraction and expansion ratio compare to others



## LESS COLOR VARIATION



Natural Wood



Kankyo-wood II

## ENVIRONMENTAL GREEN

### MADE OF:

Molded from  
55% pulverized  
Padauk Wood  
35% recycled plastic.  
100% recyclable



Recycled Padauk Wood



Recycled Plastic PEPP



Other Chemical



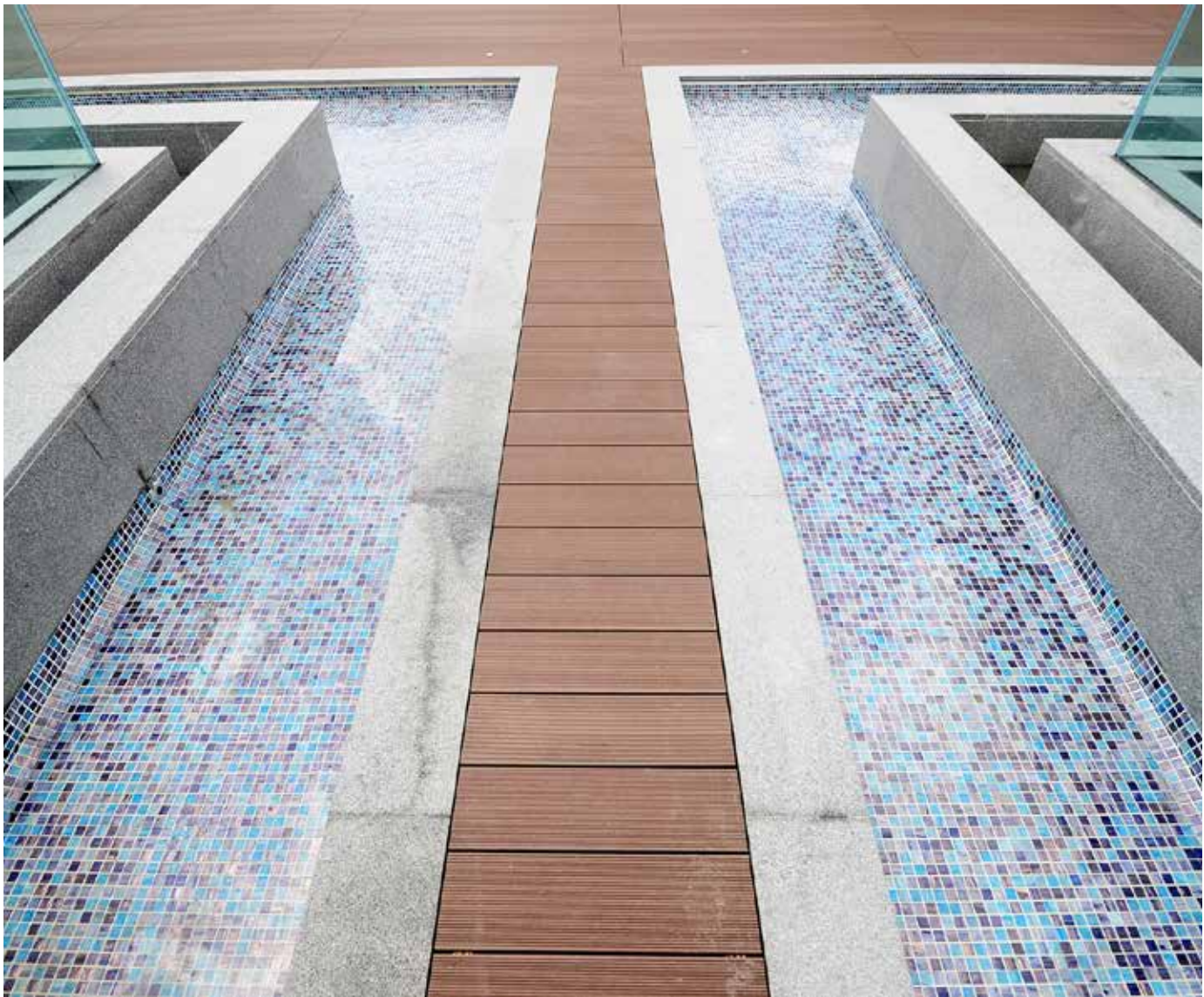
Finished Product



Scan to Explore!



# THE PIER HOTEL





NOVUM WEST



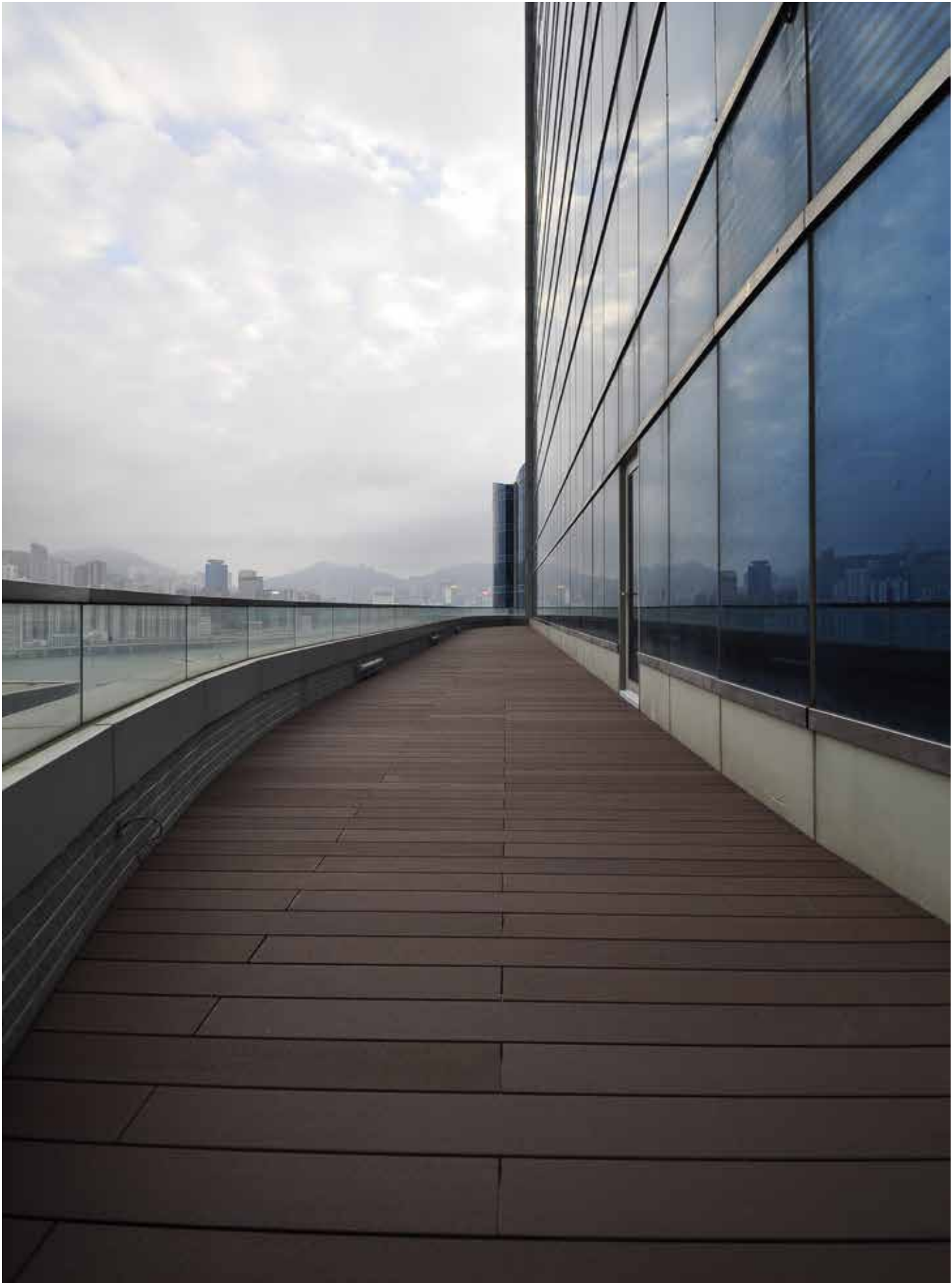


POGGIBONSI , DISCOVERY BAY





# HARBOUR GRAND HOTEL





# HARDWOOD, BAMBOO, WPC FLOORING

INNOVATIVE DECKING



THE SHARK

One & only **ACCESSIBLE** clip for screw-in and screwless decking

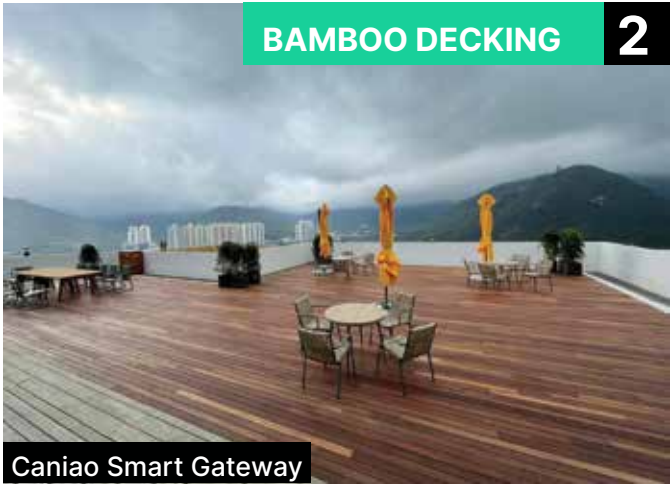
- PATENTED INVISIBLE PROFILE WITHOUT OPEN GAPS
- NO SCREWS: MAGNET CLIP SYSTEM
- 100% ACCESSIBLE



Scan to Explore!



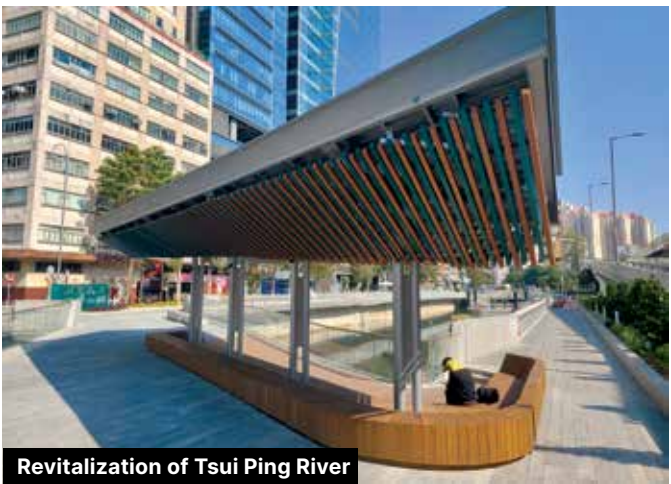
HARDWOOD DECKING 1



BAMBOO DECKING 2



WPC DECKING 3

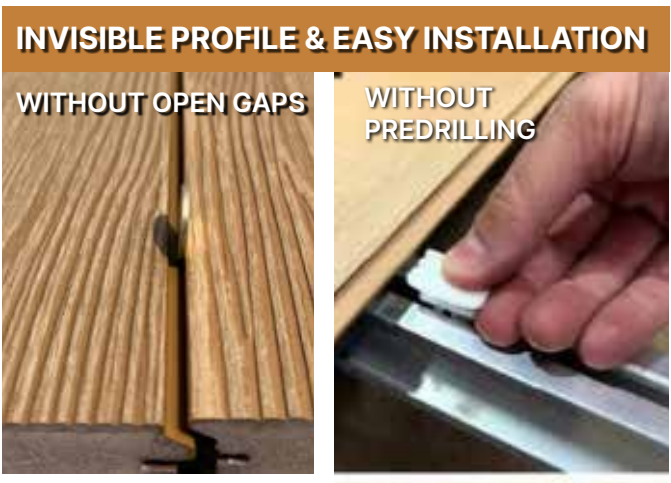


Revitalization of Tsui Ping River



KATARA TOWERS X EXTERPARK

15000m2 of EXTERPARK



INVISIBLE PROFILE & EASY INSTALLATION

WITHOUT OPEN GAPS

WITHOUT PREDRILLING





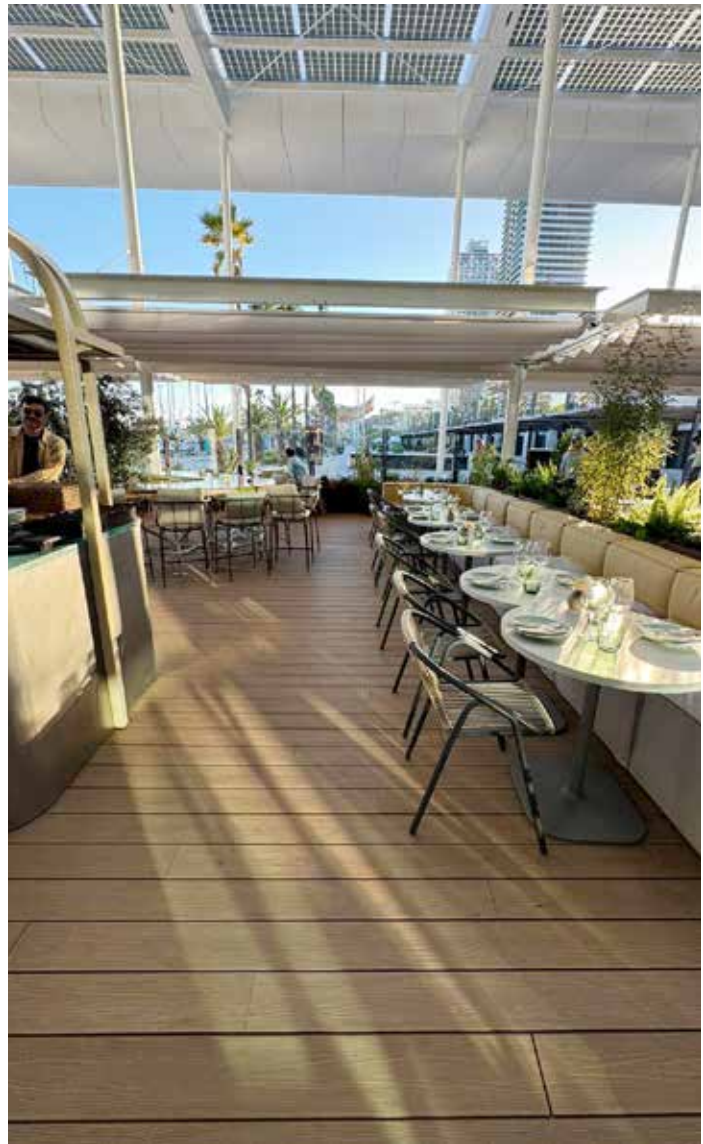
K11 Shopping Mall



Revitalization of Tsui Ping River



Tsim Sha Tsui





# FLOORING ACCESSORIES SOLUTIONS

## TACTILE

1

- Water-resistance
- Suitable for outdoor use
- Grade 316 stainless steel
- R13 slip-resistance



## ENTRANCE MATT

2

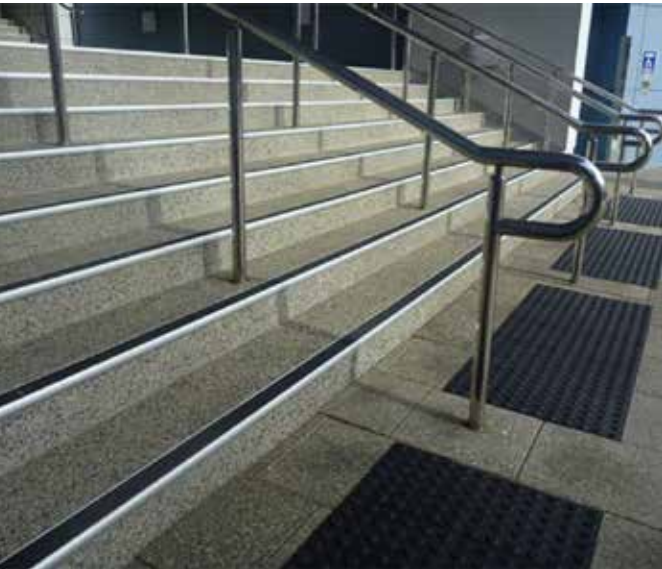
- Increases public safety
- Removes dirt and moisture
- Improves the appearance of internal floor-coverings
- Prevents unnecessary replacements



## STAIR EDGING

3

- Outstanding slip resistance
- Cos-effective
- Easy to clean
- Easy to install



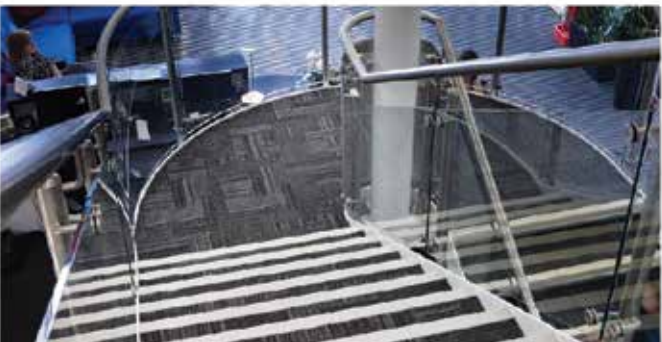
## TACTILE



## ENTRANCE MATTING



## STAIR EDGE



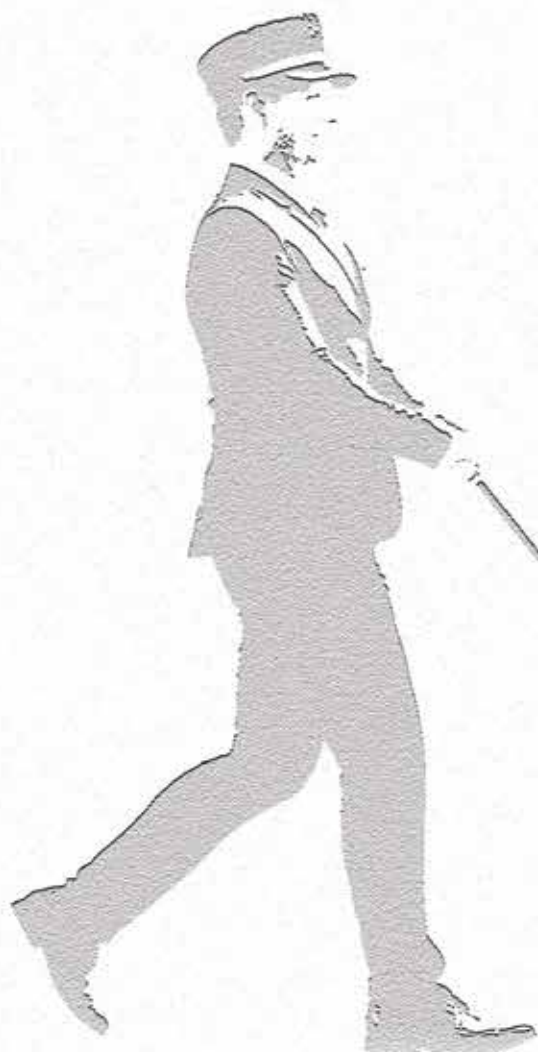


# GENESIS

TEL: +852 2503 1868  
info@genesis361.com.hk  
www.genesis361.com.hk

## **361°** CLUBHOUSE **SOLUTIONS**

Toilet Cubicle Solutions  
Locker & Bench Solutions  
Wall Solutions  
Designers Laminate Solutions  
Indoor Flooring Solutions  
Outdoor Flooring Solutions



SCAN FOR INQUIRY