

GENESIS

IPS[®]
Wall Panel System



FOR
HOSPITALS



HYGIENIC WALL PANEL SOLUTIONS FOR HOSPITAL

The IPS Hygienic wall panels are constructed of durable easy maintenance IPS framework system and unlimited colour choice of surface finishes. A decorative, corrosive resistance and hygienic system suitable for all locations and industries.

Surface finishes. A decorative, corrosive resistance and hygienic system suitable for all locations and industries.

Wall Paneling System is constrycted by robust aluminum alloy structural frame together with 13mm thick compact Laminate panel and all necessary; all in strict accordance to manufacturer's instruction. All Panel is 13mm Wilsonart solid phenolic panel complied with EN438

Wall panels and finishes that enhance hygiene and durability



CONTENTS

WASHBASIN	05
COUNTER TOP BASIN	09
URINAL	11
TOILET	13

Hygienic Walls

WHY IS IT IMPORTANT?

In medical institutions, hygienic environment protects and saves lives. Whether in hospitals, doctors’ offices, clinics or nursing homes - a comprehensive Anti-Virus and Anti-Bacterial wall panel features are very important. it helps preventing infections and contribute to the safe treatment of patients. The IPS Wall panels are easy to clean and very durable, it serves not only for covering but strategically smart piping locations with different finishing options and as a characteristic of medical equipment, furnishings and walls.

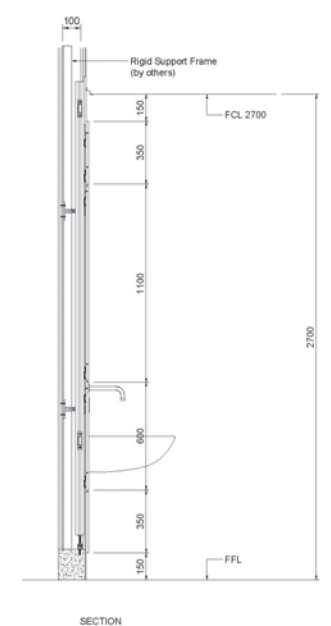
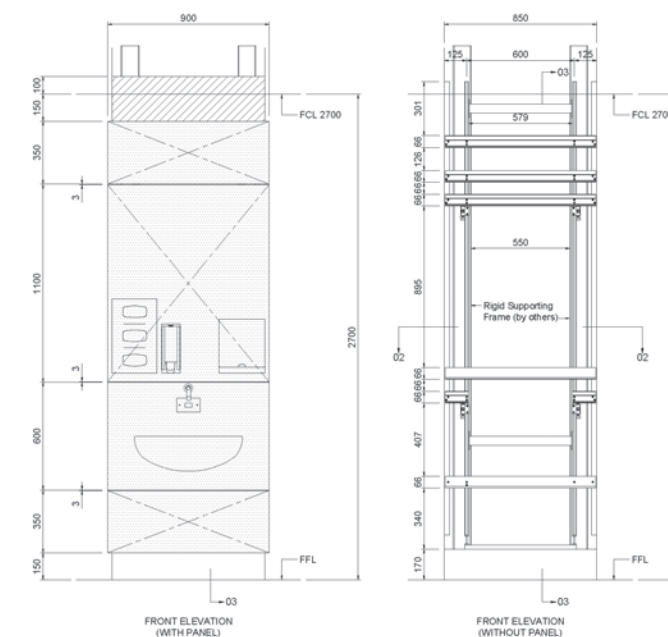


Washbasin 1

WALL PANEL SYSTEM



The IPS wall panels are constructed of durable easy maintenance IPS framework system and unlimited colour choice of surface finishes. A decorative, corrosive resistance and hygienic system suitable for all locations and industries. Surface finishes. A decorative, corrosive resistance and hygienic system suitable for all locations and industries.



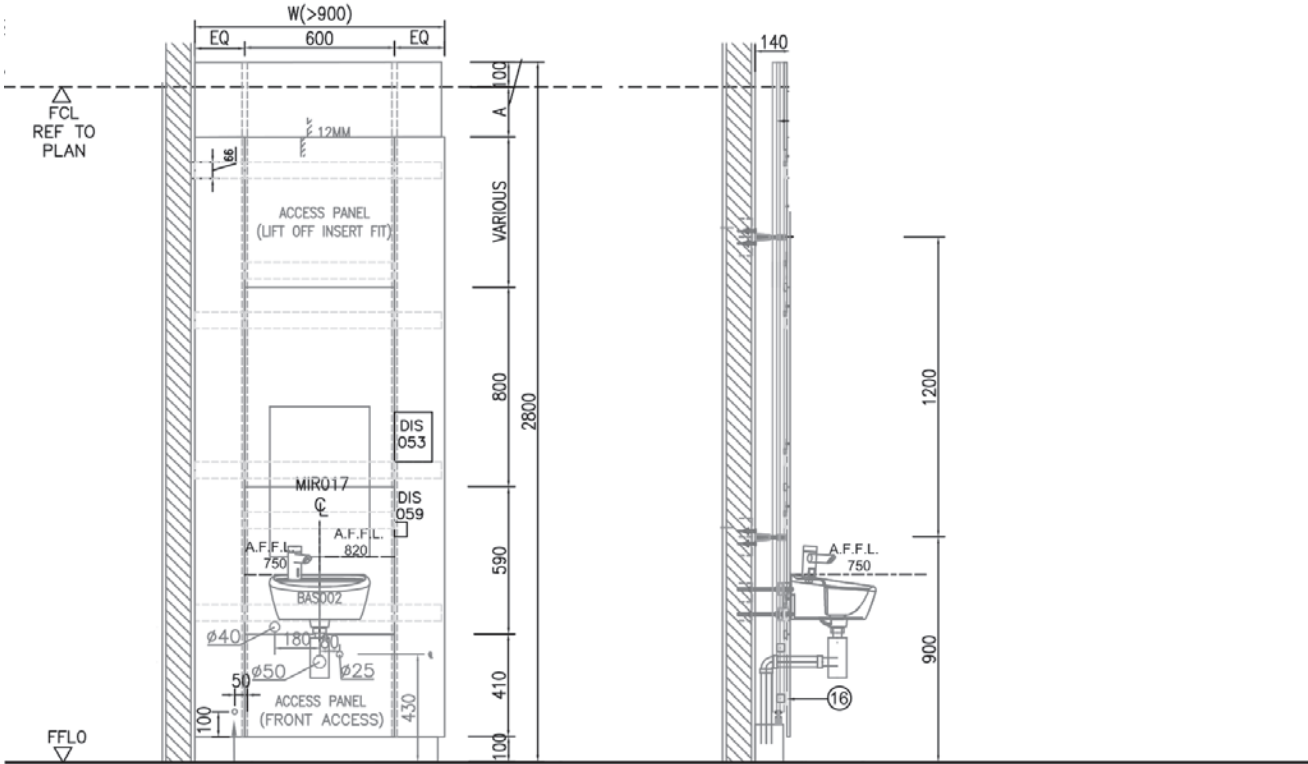


Washbasin 1

WALL PANEL SYSTEM



- 13mm thick Anti-Bacterial stratificato panel
- 13mm thick anti-bacterial stratificato panel
- 60×60×4.5mm HED al 2.0 vertical hollow profile
- HED Aluminium primary horizontal support alt6.h1
- HED aluminum secondary horizontal support
- HED Aluminum mount clip
- 13mm Stratificato panel mounting base plate
- HED S.S. adjustable foot
- Rubber extrusion profile seal to resist water splash
- 75×50×3mm C-Channel (to be by contractor on site)



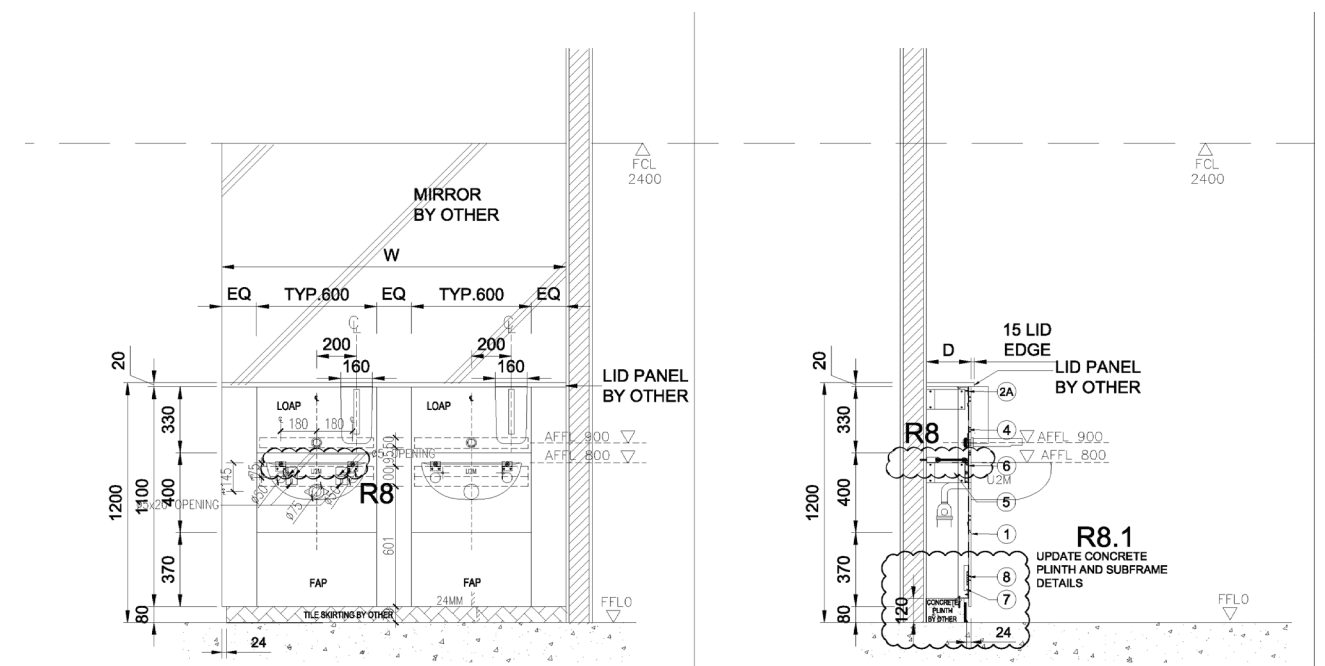


Counter Top Basin

WALL PANEL SYSTEM



The IPS wall panels are constructed of durable easy maintenance gsc framework system and unlimited colour choice of surface finishes. A decorative, corrosive resistance and hygienic system suitable for all locations and industries.



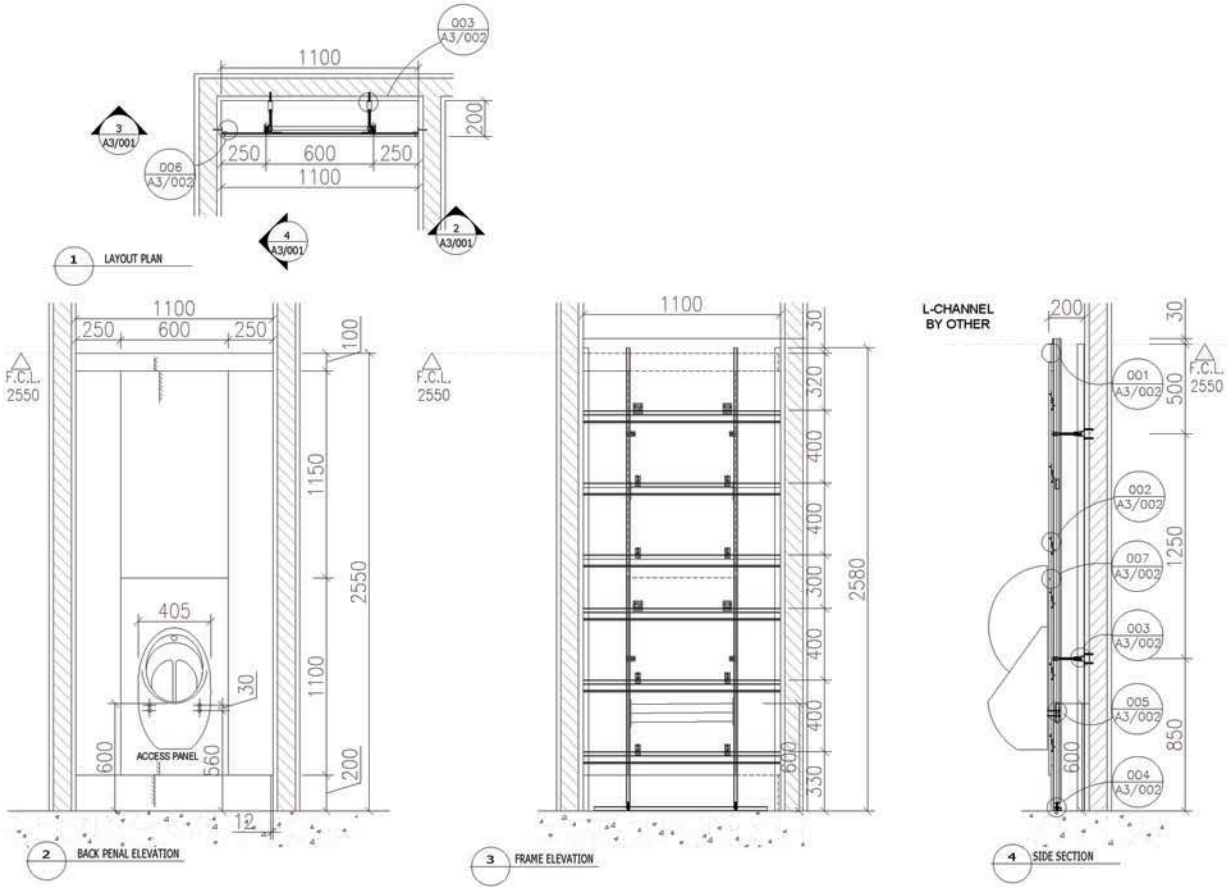


Urinal

WALL PANEL SYSTEM



- 13mm thick Anti-Bacterial stratificato panel
- 13mm thick anti-bacterial stratificato panel
- 60×60×4.5mm HED al 2.0 vertical hollow profile
- HED Aluminium primary horizontal support alt6.h1
- HED aluminum secondary horizontal support
- HED Aluminum mount clip
- 13mm Stratificato panel mounting base plate
- HED S.S. adjustable foot
- Rubber extrusion profile seal to resist water splash
- 75×50×3mm C-Channel (to be by contractor on site)



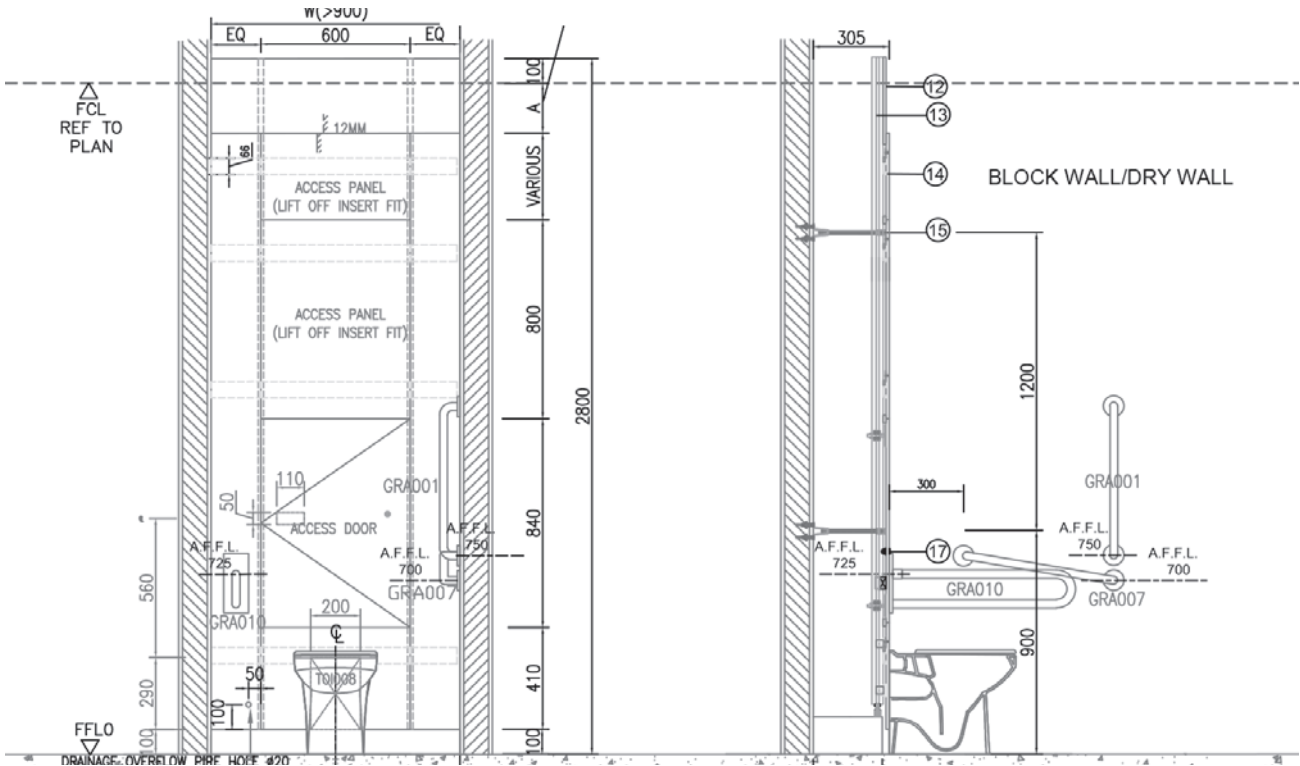


Toilet 1

WALL PANEL SYSTEM



- 13mm thick Anti-Bacterial stratificato panel
- 13mm thick anti-bacterial stratificato panel
- 60×60×4.5mm HED al 2.0 vertical hollow profile
- HED Aluminium primary horizontal support alt6.h1
- HED aluminum secondary horizontal support
- HED Aluminum mount clip
- 13mm Stratificato panel mounting base plate
- HED S.S. adjustable foot
- Rubber extrusion profile seal to resist water splash
- 75×50×3mm C-Channel (to be by contractor on site)



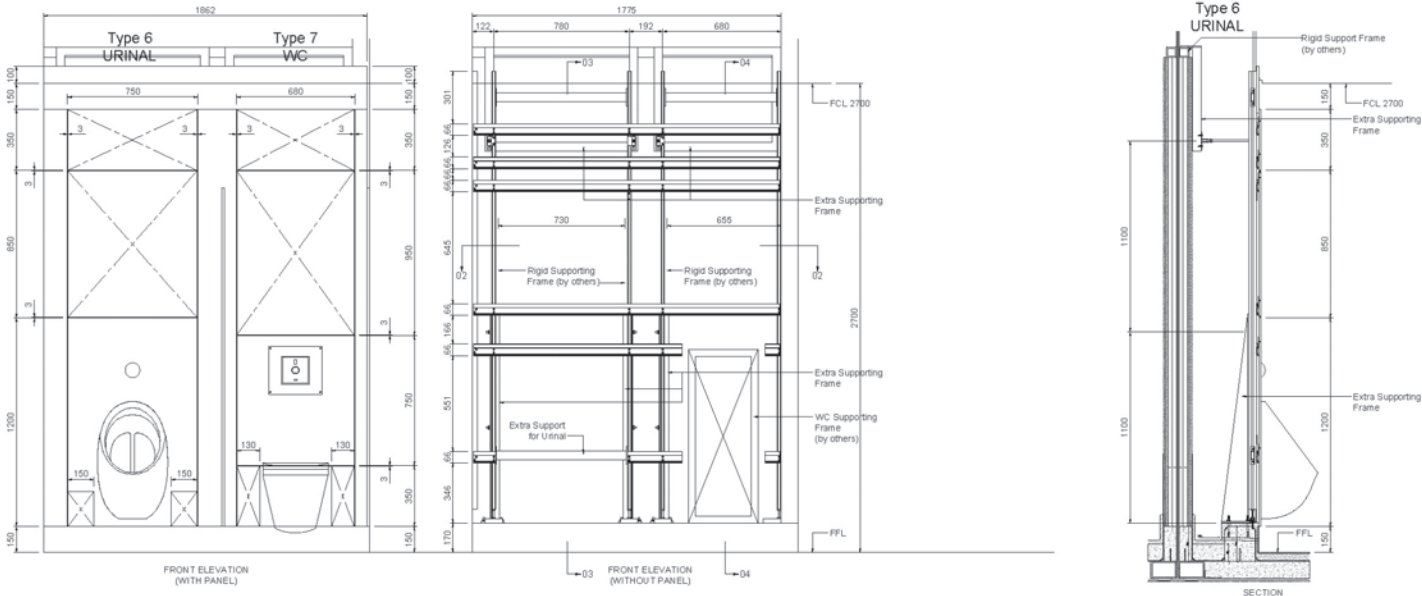


Toilet 2

WALL PANEL SYSTEM



- 13mm thick Anti-Bacterial stratificato panel
- 13mm thick anti-bacterial stratificato panel
- 60×60×4.5mm HED al 2.0 vertical hollow profile
- HED Aluminium primary horizontal support alt6.h1
- HED aluminum secondary horizontal support
- HED Aluminum mount clip
- 13mm Stratificato panel mounting base plate
- HED S.S. adjustable foot
- Rubber extrusion profile seal to resist water splash
- 75×50×3mm C-Channel (to be by contractor on site)





Greenlam is high pressure and high temperature composed material with transparent overlay for scratch resistance, European decor paper and underlay. Decor paper is melamine impregnated and kraft paper with phenolic resin. Complying to the below standard for Plastic laminates.



99.99%
VIRUS FREE

ANTI-VIRUS
TEST

ISO 21702 is one of the most commonly requested antiviral surface test methods for evaluating the antimicrobial activity of antiviral-treated plastic and non-porous products.

ANTI-BACTERIA
TEST

The JIS Z 2801 method tests the ability of plastics, metals, ceramics and other antimicrobial surfaces to inhibit the growth of microorganisms or kill them.

FUNGUS
RESISTANCE TEST

This practice covers determination of the effect of fungi on the properties of synthetic polymeric materials in the form of molded and fabricated articles, tubes, rods, sheets, and film materials

- FEATURES:**
- ▶ **ANTIBACTERIAL.**
TESTED 9 BACTERIA & FUNGUS
 - ▶ **RESISTANCE TO SURFACE ABRASION & SCRATCH.**
 - ▶ **ANTI-CIGARETTE BURN.**
 - ▶ **RESISTANCE TO MOISTURE.**
1. Pseudomonas Aeruginosa

2. Enterococcus Faecalis

3. Candida Albicans

4. Pseudomonas Aeriginosa

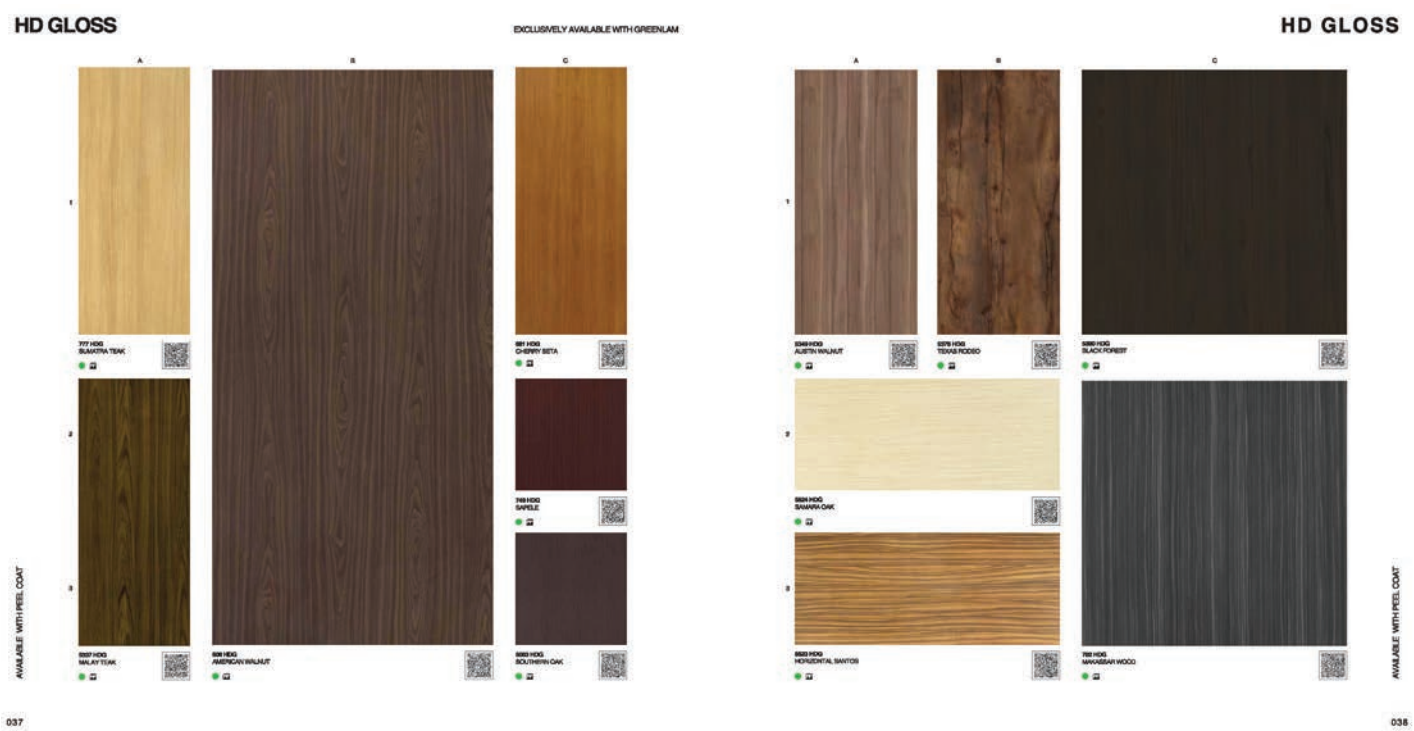
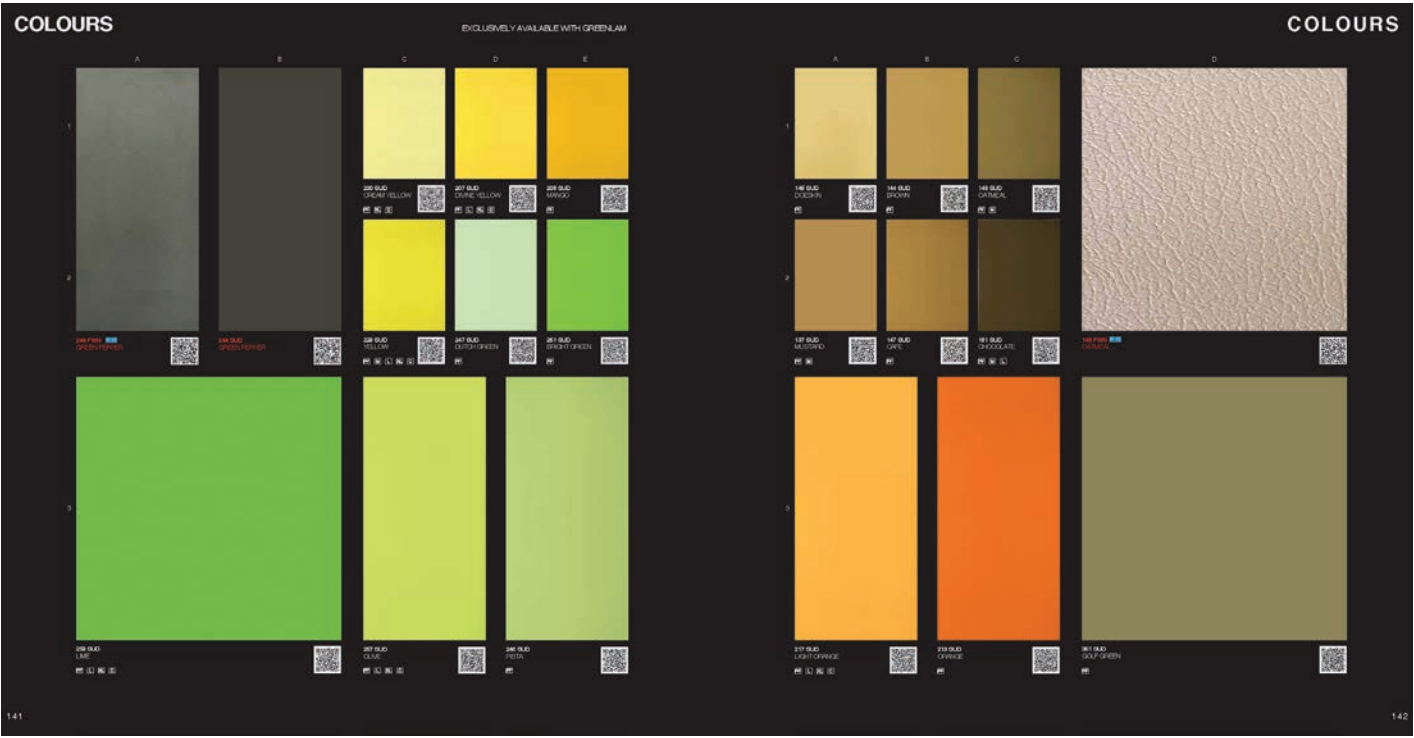
5. EscherichiaColi

6. Klebsiella Pneumoniae

7. MRSA

8. Salmonella Enterica

9. Candida albicans ATCC

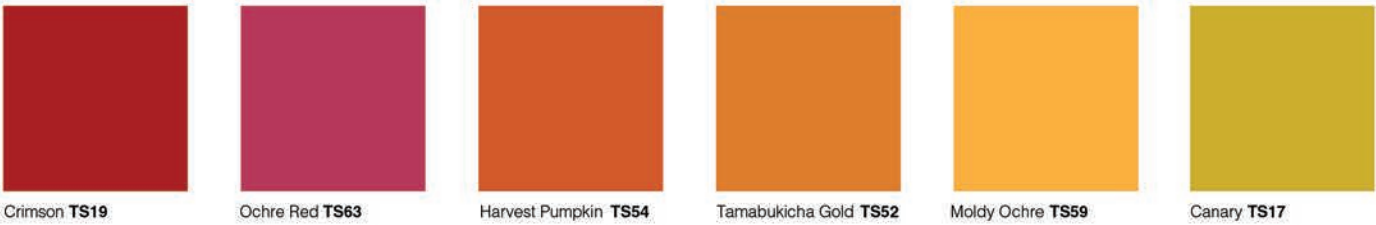


Wall Panel System Finish concept

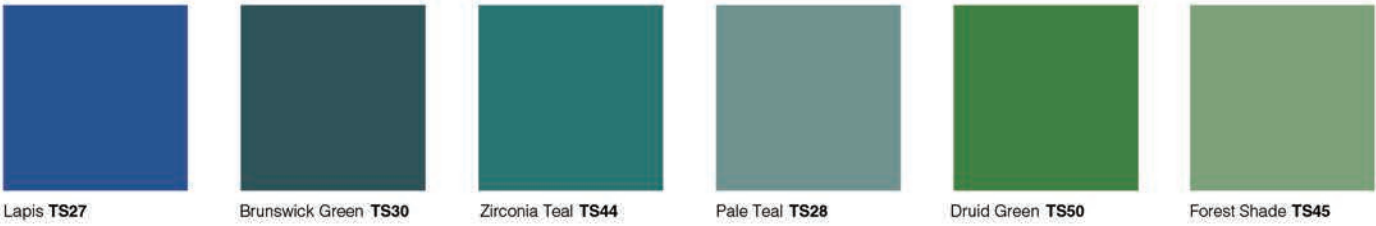
The Genesis Wall Panel Solution color concept contains both classic and modern colours. For a successful comfortable ambience, you may compile an individual cubicle system, according to your own requirements.

Solid Color Options

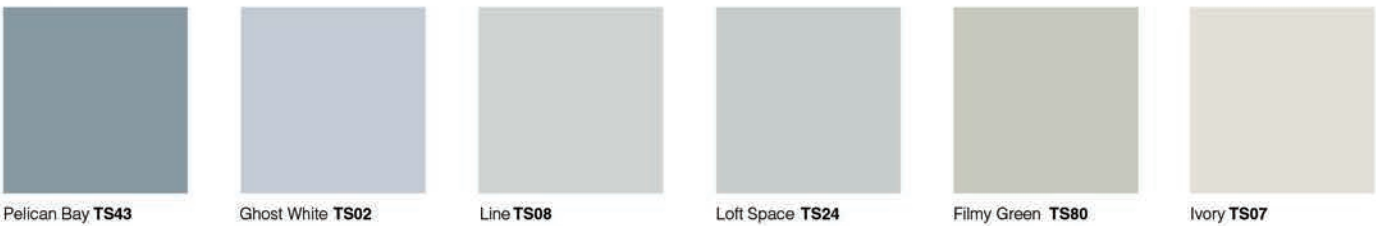
Warm Color:



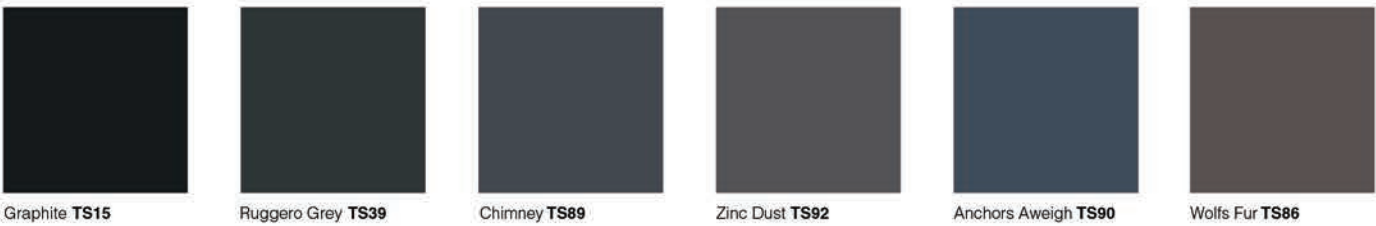
Cool Color:



Light Color:



Dark Color:



Standard Sheet Sizes

ST - 4' x 8' (1220 x 2440 mm) / MX - 4' x 10' (1220 x 3050 mm) / XL - 6' x 12' (1830 x 3660 mm)

Thickness

HPL Thickness: 0.6~1.2 mm / Compact Panel Thickness: 3~25 mm



Select from our impressive standard range of colours and finishes, or from our extended range for something more unique



ANTI-BACTERIAL LAMINATES

Wood Finish Options



Metal Finish Options

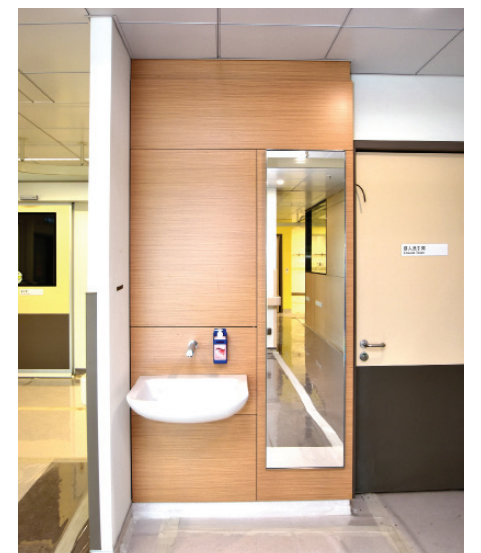


MORE COLOR & FINISH AVAILABLE
Email: info@genesis361.com.hk

Job References

Queen Mary Hospital

Toilet Cubicle Partitioning System / Lockers / Wall Panels System



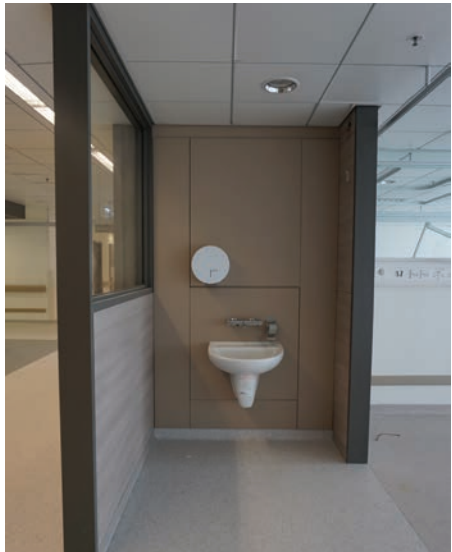
Yau Ma Tei Specialist Clinic

Toilet Cubicle Partitioning System / Wall Panels System



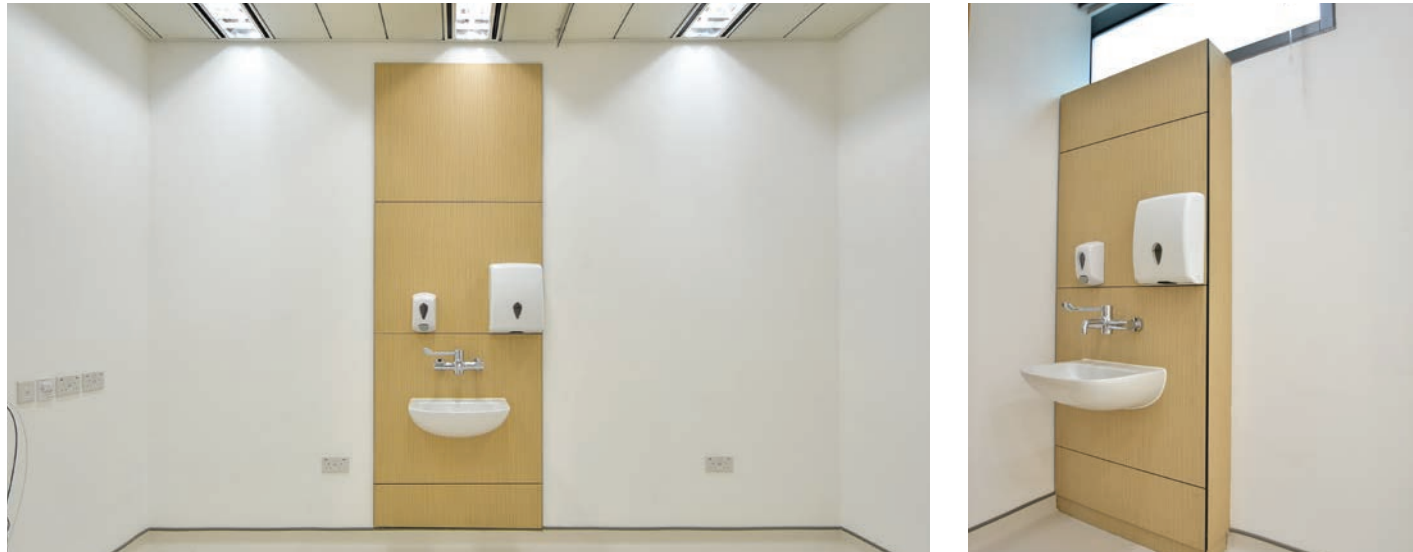
Tin Shui Wai Hospital

Toilet Cubicle Partitioning System / Lockers / Wall Panels System



Treasury Building

Wall Panels System



JOB REFERENCES

IPS Wall system installed and achieved in Hong Kong

Yau Ma Tei Specialist Clinic
Tin Shui Wai Hospital
Kwai Chung Hospital
Treasury Building
HK Baptist University
Queen Mary Hospital
Swatow Baptist Church
Kwun Tong Clinic
Hong Kong Stadium
Kai Tak Sports Park

Specification

Specification



CATEGORY	: IPS Wall Panel System	DATE	: 25/4-2024
PROJECT NAME	:		

SUPPLIER & INSTALLER

SUPPLIER NAME	: Genesis Development Limited	CONTACT	: Terence Yeung
TELEPHONE	: 2909 9477 / 5318 6703	FAX	: 2503 1768
E-MAIL	:		

PARTICULARS

LOCATION	:	BRAND	: Genesis IPS Wall Panel System
MODEL	:		IPS Access Back panel and Ledge Wall System

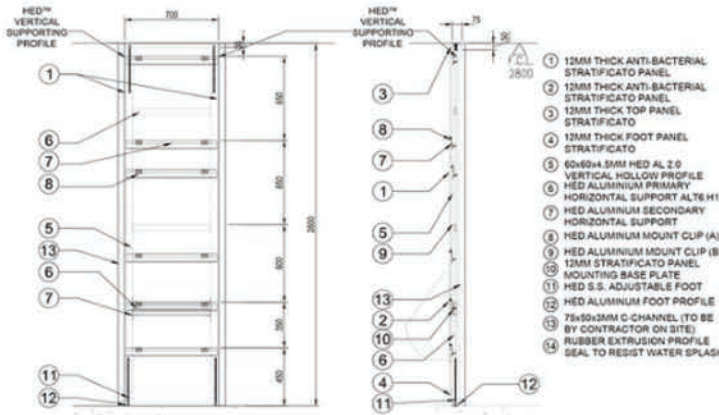
IPS Access Back panel and Ledge Wall System



Product Tender data sheet
Prewall installation GCS Dry Wall Access Ledge Wall System
L01.03.052



- pre-wall element for urinals, WCs and washbasins
- retaining elements for keeping the surfaces in place
- suitable for installation in dry walls by floors and ceiling rails or for mounting on the floor and ceiling
- floor and ceiling fixing profiles suitable for concrete and solid calcium silicate (lime-sand) masonry units only
- dimensions: W 700 mm , H 2800 mm, D 70 mm.
- dimensional flexibility available with our Technical advice
- suitable for standard commercial WCs with a projection of up to D 700 mm
- incl. fittings which are suitable for standard commercial urinals, washbasins
- adaptable initial height of the Urinals, WCs and Washbasins due to the adjustable floor supports
- floor support height adjustable by 150 mm
- integrated fixing plates for two hinged support rails
- made of steel, powder coated and aluminium hardware
- loading capacity to EN 14688 with 150 kg
- supplied without Urinals, WCs and Washbasins



REMARKS:

- 1) All finishes, materials or fittings etc. shall be as per requirements stipulated herein or any equivalent subject to discretionary approval of architect's / designer.
- 2) Samples of finishes and shop drawings shall be submitted to the architect / designer for approval prior to commencement.
- 3) For furniture item, 1:1 FULL SCALE shop drawings shall be submitted.

