

The advertisement features a composite image of three professionals in a modern office setting. On the left, a man in a light grey shirt and tie, wearing a white hard hat, is talking on a mobile phone. In the center, a woman in a teal shirt and white hard hat looks directly at the camera. On the right, a man in a yellow high-visibility vest over a blue shirt, wearing a white hard hat, is looking down at a large set of white architectural blueprints. In the background, a man in a dark suit stands with his back to the camera, looking out over a city skyline with several tall, illuminated skyscrapers. The floor is made of light-colored wood. The overall tone is professional and modern.

GENESIS

361° COMMERCIAL SOLUTIONS

Genesis Development Limited

Toilet Cubicle Solution | Locker & Bench Solution | Wall Solution | Designer's Laminate Solution
Indoor Flooring Solution | Outdoor Flooring Solution

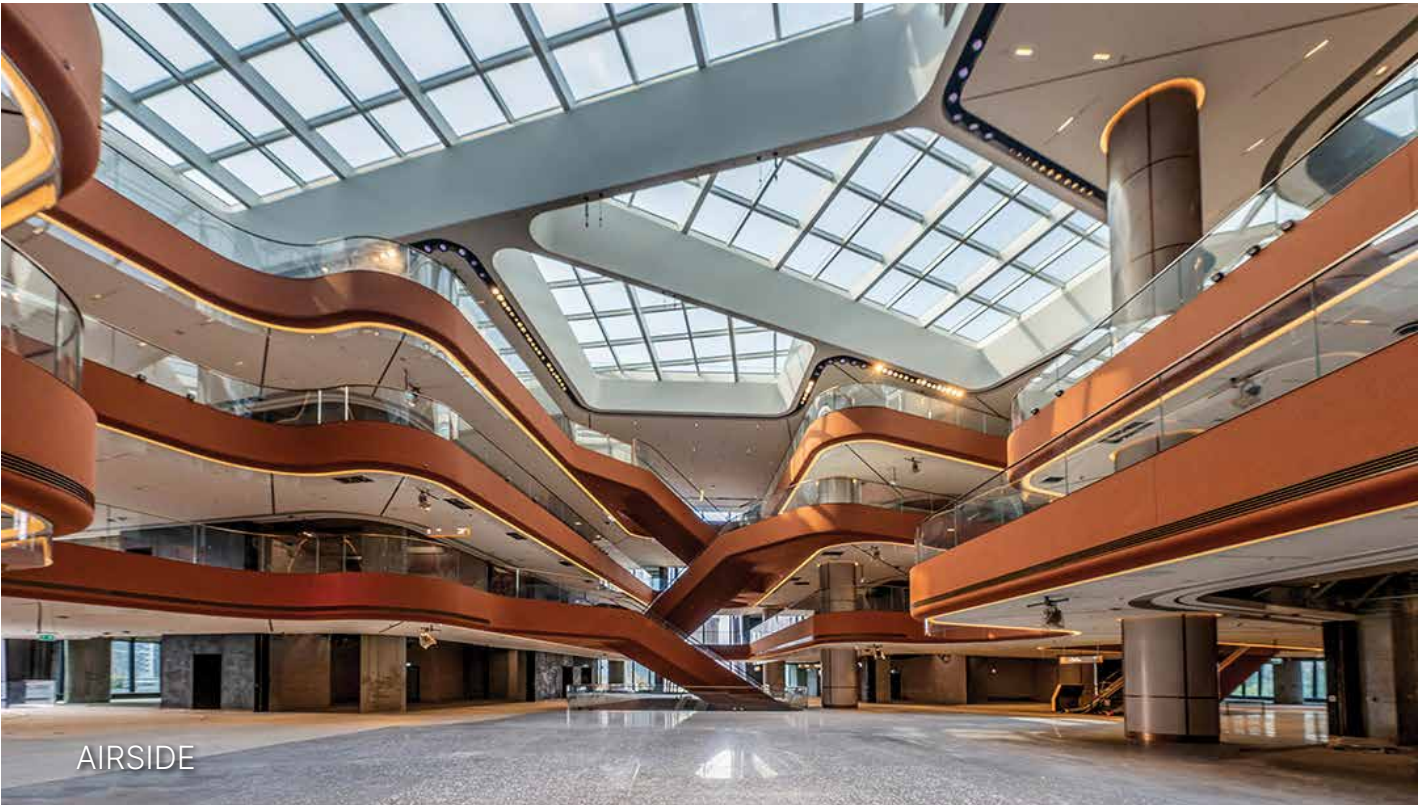
OUR ACHIEVEMENTS IN THE COMMERCIAL SECTOR



THE HENDERSON



HONG KONG INTERNATIONAL AIRPORT TERMINAL 2 & 3



AIRSIDE



IFC



TAIKOO PLACE 1 & 2

What is Commercial Solution?

How Genesis plays an important role?

Genesis Development Limited plays a pivotal role in enhancing the commercial sectors by providing high-quality, innovative materials that meet the diverse needs of the fast-paced construction industry. By ensuring a steady supply of sustainable and cutting-edge products, such as eco-friendly products, advanced smart systems, and durable finishes, Genesis can help developers and contractors build safer, more efficient, and aesthetically pleasing facilities.

Moreover, with its commitment to exceptional customer service and technical support, the supplier can facilitate timely project execution, thereby boosting productivity and reducing costs. Ultimately, this collaboration fosters a thriving commercial landscape in Hong Kong, contributing to economic growth and creating vibrant spaces that support businesses and communities alike.

Your One Stop Solution for Commercial Sector.

Toilet Cubicle Solutions
Smart Locker Solutions
Wall Solutions
Indoor Flooring Solutions
Outdoor Flooring Solutions



TOILET CUBICLE SOLUTIONS

The essence of having a smart washroom solution in the office and commercial sector lies in enhancing hygiene, efficiency, and user experience. Smart washrooms equipped with touchless features, real-time occupancy sensors, and automated cleaning notifications reduce the risk of germ transmission and ensure that facilities are always in optimal condition. Moreover, advanced analytics can help facility managers monitor usage patterns and optimize maintenance schedules, leading to cost savings and reduced environmental impact.

CHARACTERISTICS OF **GOOD WASHROOM** ENVIRONMENT

Smart Technology

TOUCHLESS features, Indoor Air quality control , Automatic monitoring of Paper and Soap Dispensers, temperature control, making the washroom hygienic, advanced and smart management efficient.

Cleanliness

Easy-to-clean Anti-virus / Anti-bacterial surfaces and monitored regular maintenance to keep the cubicle hygienic.

Durable Materials

Use of high-quality materials that resist wear and tear, Anti-virus and Anti-bacterial, moisture, impact resistant and anti-tainting.

Emergency Features

Emergency Buttons, Radar Detection of Fall Alert systems for safety in case of emergencies.

Privacy

Full-height partitions that prevent sight lines and ensure user comfort.

ZEROTOUCH 1.0

SMART TOUCHLESS TOILET CUBICLE SYSTEM

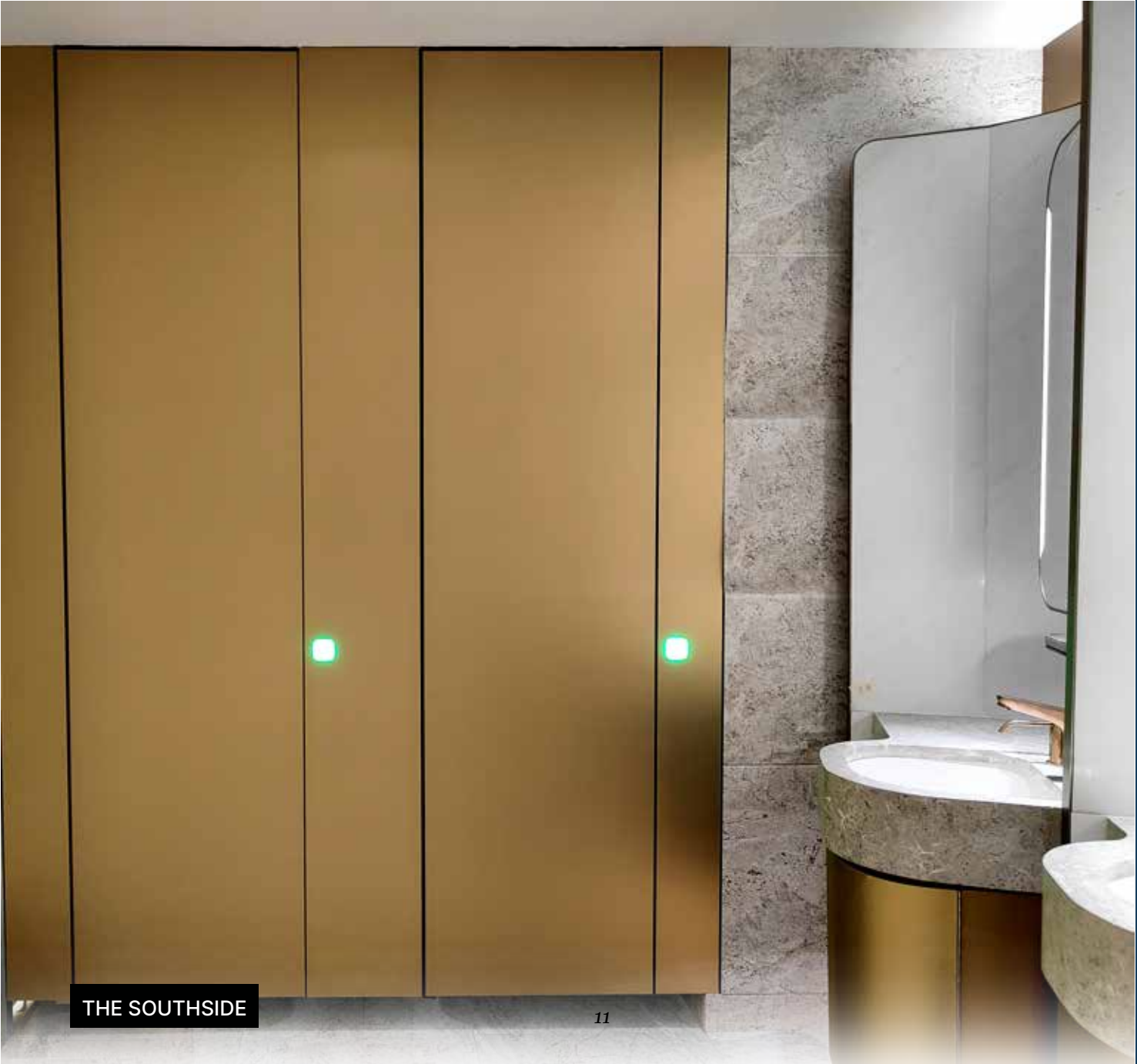


THE HENDERSON



TOILET CUBICLE





ZEROTOUCH 2.0

TOUCHLESS + MANUAL OVERRIDE TOILET CUBICLE SYSTEM



Touchless Function

2nd Generation Sensor
Enhancing higher sensitivity and reacting time as well as avoiding environment interference.



Manual Override Function

The user has always the flexibility to operate by manual lock.

CURVO

CURVED TOILET CUBICLE SYSTEM



Premium washroom design featuring the Curve Cubicle System. The cubicles have a sleek, modern aesthetic curved edges with flexible style and finish. The cubicle doors are framed seamlessly, creating a minimalist yet elegant look.

ALTUS

FULL HEIGHT TOILET CUBICLE SYSTEM



AIRSIDE - MALL



AIRSIDE - OFFICE

Privacy is becoming increasingly important, especially in the education and commercial sectors. Genesis EF-3 Altus Full-Height is specified for its size, strength and durability. Easy to clean, robust and moisture-proof, this cubicle are suitable for both wet or dry environment.



WINDSOR HOUSE



AIRSIDE - OFFICE



VENTO

LUXURY GLASS TOILET CUBICLE SYSTEM



HENDERSON - CLOUD 39



TWO IFC



LADIES RECREATION CLUB

Showcasing the Genesis EF-3 Vento Exclusive Glass Cubicle System, a premium toilet cubicle solution designed for elegance, durability, and safety.



JUMP

FLOATING TOILET CUBICLE SYSTEM



This modern-look toilet cubicle system is known for its Floating outlook effect which creates an unobstructed floor space for easy floor maintenance and making spaces feel wider and brighter.



SMART WASHROOM SOLUTIONS



SMART WASHROOM SOLUTIONS



What are the benefits of Smart Washroom Solution?

ENHANCE USER EXPERIENCE

- Enhanced washroom experience.
- Safe and comfortable environment.
- Improved cleanliness, neatness and hygiene condition inside the toilet.
- All in toilet appliances and facilities are available and operating in good condition.
- Pleasant environment with comfortable temperature, humidity, ventilation, air quality.
- No unpleasant odors.

EFFICIENT MANAGEMENT SYSTEM

- Improving washroom management efficiency
- Detects fall incident.
- Save labor cost and minimize overstock of supplies (Soap, Toilet paper)
- Helps facility managers or property owners to improve the washroom service quality standards.
- Automates daily cleaning and emergency repairs management.
- Provide instant alert for emergency (Water leakage), reducing repair cost.
- Efficiently scheduled maintenance.
- Adds value to your property.

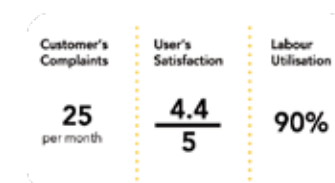
ACCIDENT ALERT & SAFETY MANAGEMENT

- Motion Sensor can detect an area of 2 Sqm.
- Protects Privacy - Detect motions only, with no camera lens.
- Property Management will receive the alarm from the motion sensor to initiate a fast and quick rescue operation.



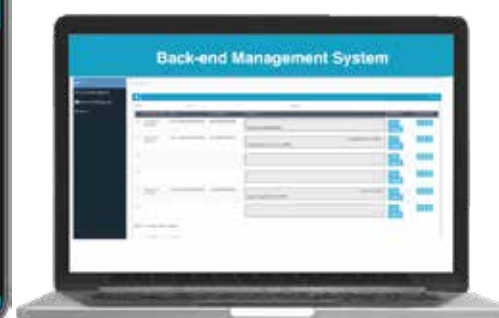
BIG DATA ANALYSIS & CUSTOMER INTERACTION

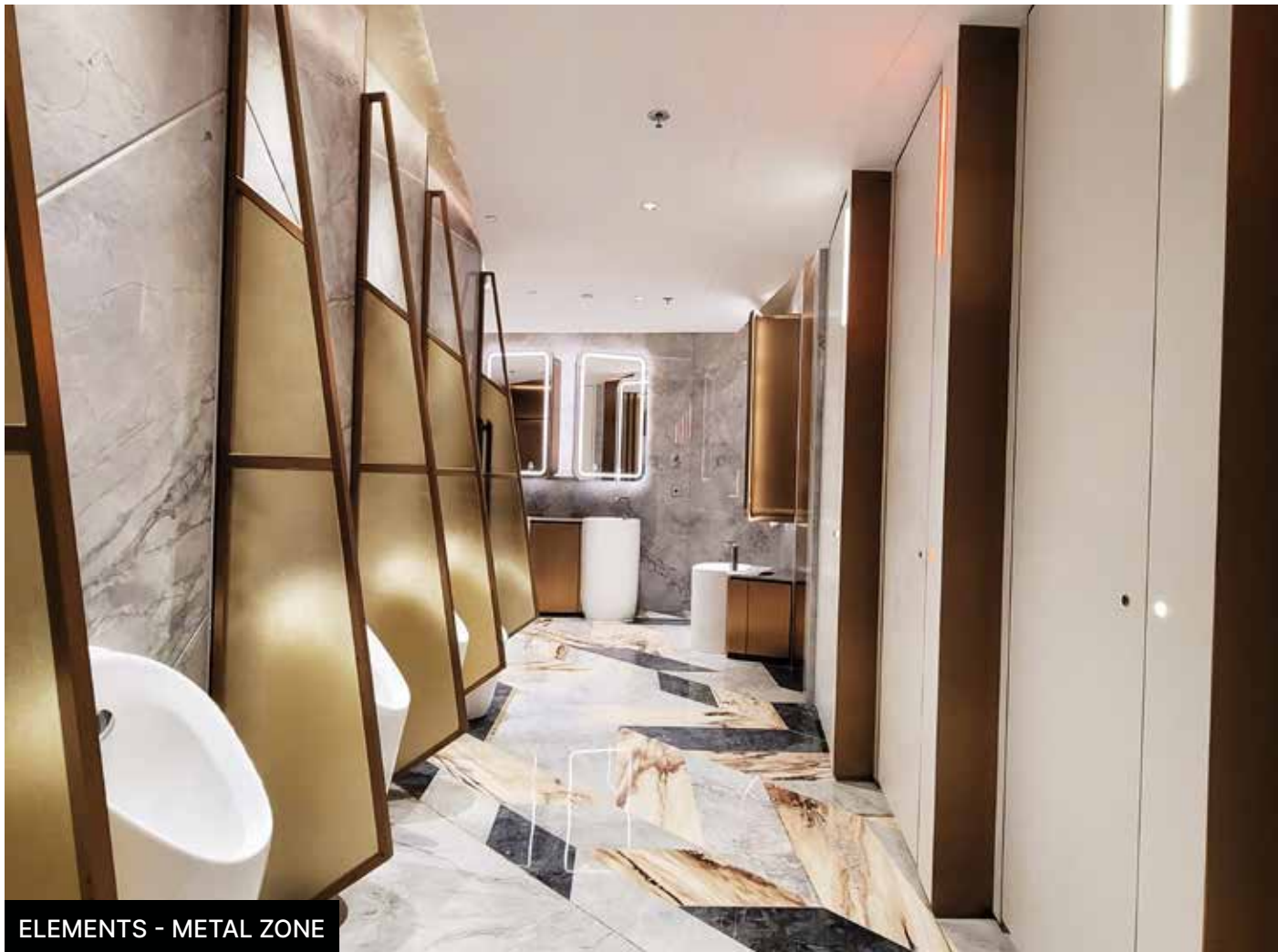
- The system instructs workers and provides insight to management.
- Overall key performance indicators for toilet.
- Specific toilet performance metrics and comparisons.
- Receive notifications/task list from managers.



DASHBOARD REPORTS & CLIENT INFORMATION DISPLAY

- Enables management to monitor occupancy, alerts, toilet supplies and manpower system.
- Auto-generated reports for property management platform & system.
- On-spot display of generated report and situation for the user.





ELEMENTS - METAL ZONE



ELEMENTS - WATER ZONE



ELEMENTS - FIRE ZONE



SMART LOCKER SOLUTION

The essence of implementing a smart locker solution in the office and commercial sectors lies in its ability to enhance efficiency, security, and convenience. Equipped with advanced technology such as One Central Unit / Standalone Offline and Online Lockers, users can easily manage and accessed their own belongings with more effective, organized and productive business ecosystem.

CHARACTERISTICS OF **GOOD LOCKER** ENVIRONMENT

Security Features

Keypad locks, RFID's or biometric access for enhanced security with durable materials that resist tampering or forced entry.

Durability

Made from strong compact laminate high-quality materials , Impact resistant, anti-corosion, to withstand daily use Easy-to-clean surfaces resistant to germs and bacteria.

User-Friendly Design

Intuitive locking mechanisms like digital locks, Rfid, keypads and Accessibility for all users, including those with disabilities

Smart Features

Features like built-in charging stations for electronic devices. Managing Lockers using One Central Unit operation. Hooks, shelves, or compartments for better organization and features that protect users' belongings without shared access.

Monitoring & Reporting

Systems that track usage patterns and locker availability Alerts or notifications for management purposes, improving efficiency.

KUBISCH

COMPACT LOCKER SYSTEM

HED™ KUBISCH Locker systems are constructed by the finest sustainable materials using state-of-the-art technology to deliver the most ideal solutions to demanding architects and developers.

The systems are made from 100% water resistant High Pressure Laminate (HPL), stainless steel anti-rust hardware and extruded aluminium profiles which offers architects and developers an ideal solution for wetness prone spaces.



TWO TAIKOO PLACE - B

SMART LOCKER



HANG SENG BANK HEADQUARTERS



BERKSHIRE HOUSE

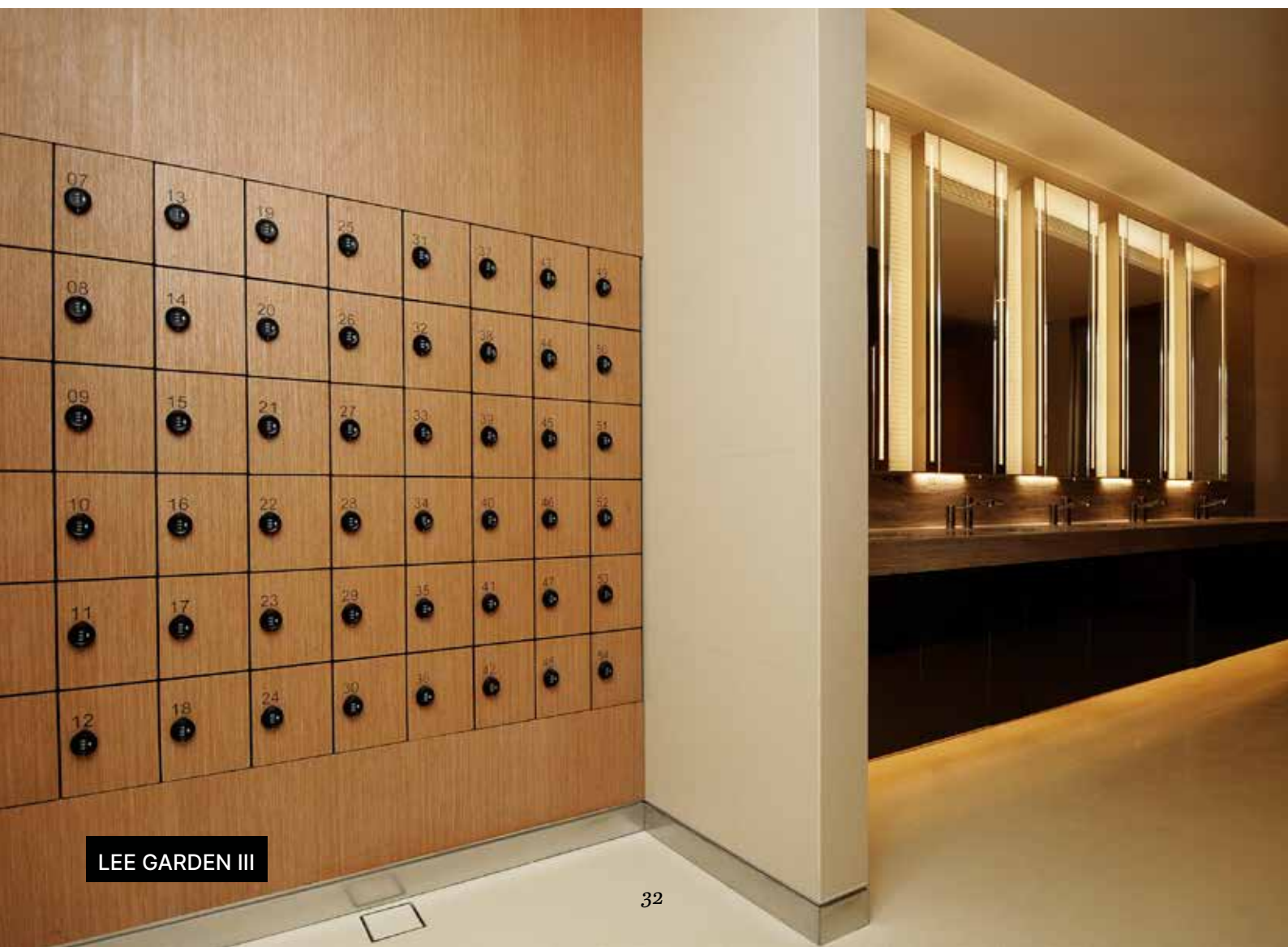




HKIA - TERMINAL 1



OCEAN PARK



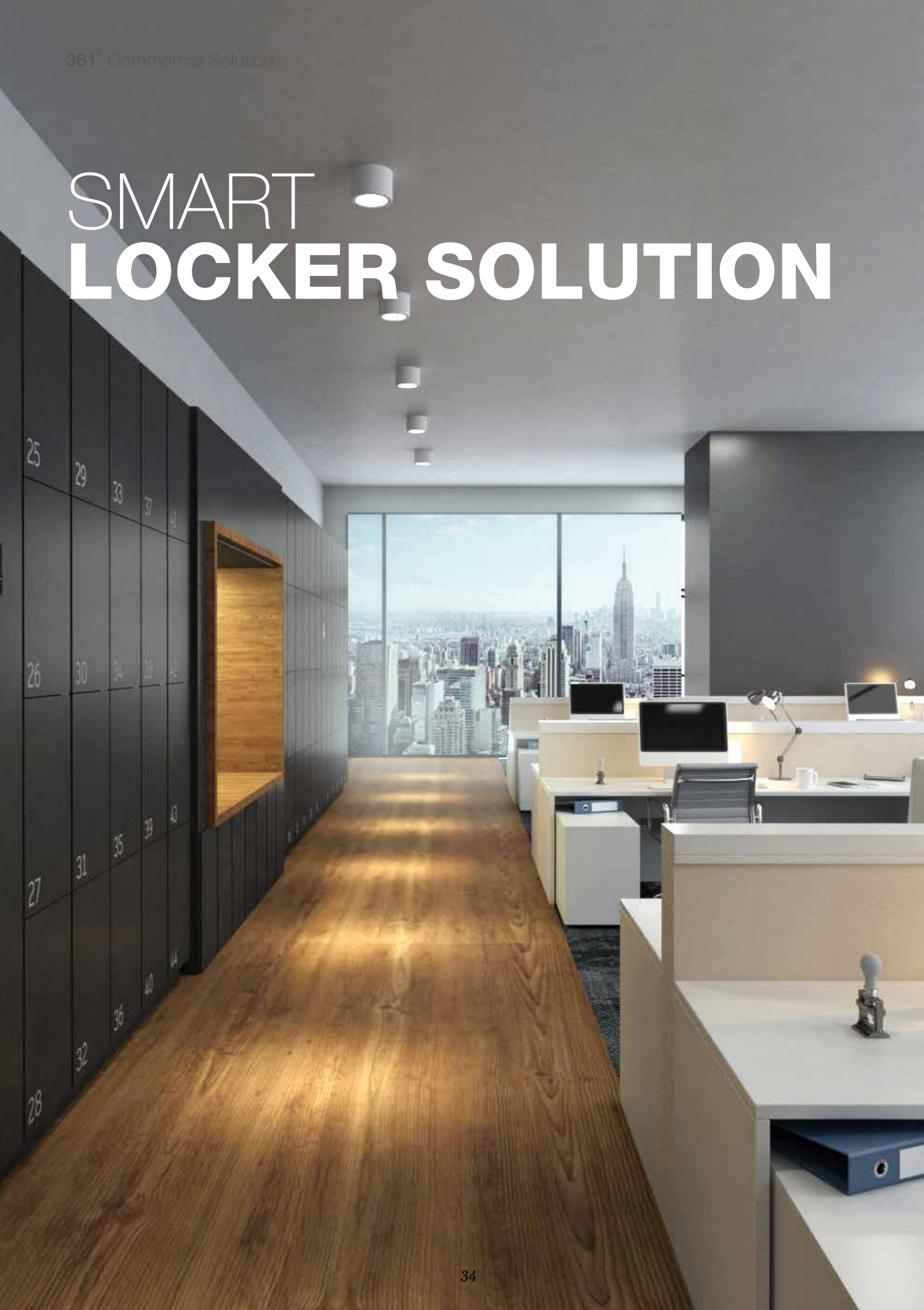
LEE GARDEN III



JW MARRIOTT



SMART LOCKER SOLUTION



TWO IFC



SMART LOCKER SOLUTION



Back-End Management System

- Can access to lock and unlock the users locker
- Can see the locker's history, reports of usage, date and time.
- Access anytime, anywhere via Laptop, Tablet or Mobile Phone.
- Can void users card.

GIOT Locker App



Features

- Send temporary passcode/ekey remotely
- Manage passcode, ekey
- View access logs
- Open the lock by app remotely or nearby.
- Passage mode setting
- Get the unlock records
- Send temporary password
- Time attendance.



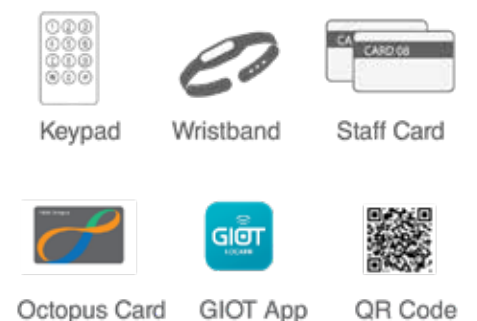
1. STAND ALONE : OFFLINE/ONLINE

Using the Wristband, RFID Cards can fully access the locker by offline mode or online for secure storage flexible and easy to use. Can also charge gadgets inside the locker.



2. SMART CENTRAL UNIT

- Locking system with central control unit:
- A set of lockers can manage and access using one Locking device reader.
- RFID system
- Back-end Management system (register,void,report)



ABET LAMINATI

LATEST ABET RANGE



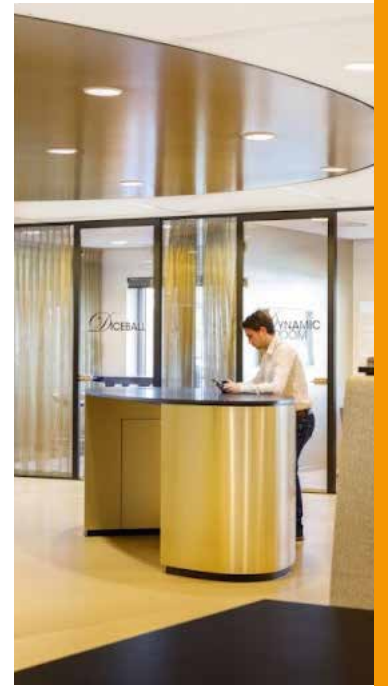
Polaris

Polaris is a material with unique characteristics starting from the general feeling of deep, soft touch and full surface. The colour is 'melting', conveying a feeling of depth. Dense and Elegant.



Metalli

The elegance of a satin finish or the brilliance of precious metal. Finishes suitable for metal-inspired decors such as Satin and Morbida create a feeling of sophistication and elegance, showcasing the uniqueness of Metalli Series decors.



Mare Nostrum

Matteo Ragni /
Our Sea Collection

Mare Nostrum is a collection of decors that celebrates the sea, a symbol of vitality and biodiversity.



Velwood

The new Velwood finish skillfully combines the tactile feel of velvet with the depth of natural wood.





Greenlam earns EPD certification, affirming eco-responsibility, quality, and support or sustainability.

99.99%
VIRUS FREE



SMART LOCKER

Greenlam is high pressure and high temperature composed material with transparent overlay for scratch resistance, European decor paper and underlay. Decor paper is melamine impregnated and kraft paper with phenolic resin. Complying to the below standard for Plastic laminates.

FEATURES:

- ▶ **ANTIBACTERIAL**
TESTED 9 BACTERIA & FUNGUS
 1. Pseudomonas Aeruginosa
 2. Enterococcus Faecalis
 3. Candida Albicans
 4. Pseudomonas Aeruginosa
 5. EscherichiaColi
 6. Klebsiella Pneumoniae
 7. MRSA
 8. Salmonella Enterica
 9. Candida albicans ATCC
- ▶ **RESISTANCE TO SURFACE ABRASION & SCRATCH**
- ▶ **ANTI-CIGARETTE BURN**
- ▶ **RESISTANCE TO MOISTURE**



ANTI-VIRUS TEST

ISO 21702 is one of the most commonly requested antiviral surface test methods for evaluating the antimicrobial activity of antiviral-treated plastic and non-porous products.

ANTI-BACTERIA TEST

The JIS Z 2801 method tests the ability of plastics, metals, ceramics and other antimicrobial surfaces to inhibit the growth of microorganisms or kill them.

FUNGUS RESISTANCE TEST

This practice covers determination of the effect of fungi on the properties of synthetic polymeric materials in the form of molded and fabricated articles, tubes, rods, sheets, and film materials.

WALL PANEL SOLUTION

A high-quality wall protective solution for offices and commercial spaces offers numerous advantages that enhance both functionality and aesthetics. These solutions are designed to be durable, resistant to impacts, stains, and everyday wear, ensuring long-lasting protection that maintains the integrity of walls.

CHARACTERISTICS OF **GOOD WALL PANELS**

Durability

Able to withstand impacts, abrasions, and general wear and tear, ensuring long-lasting performance.

Impact Resistance

Protects walls from unintended impacts, such as those from carts, equipment, and foot traffic.

Non-Toxic Materials

Made from safe, non-harmful materials that contribute to healthier indoor air quality.

Sound Absorption

Helps reduce noise levels and improve acoustic comfort within the space.

Aesthetic Appeal

Available in various colors, patterns, and finishes to match the interior design and enhance the overall appearance of the space.

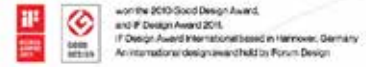
Easy Installations

Systems that track usage patterns and locker availability Alerts or notifications for management purposes, improving efficiency.

WPS

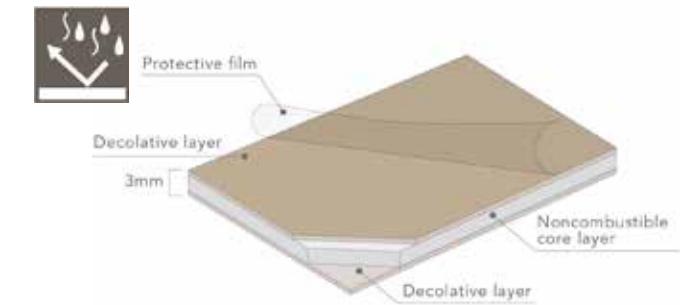
WALL PANEL SYSTEM

- Non-Combustible Decorative Panels
- Water-Resistance
- Supports the creation of clean spaces with antibacterial feature* (product registered with SIAA).



HEAT & HUMIDITY RESISTANT

No discoloration when splashed with hot water. Not even cigarette stains stick.



EXTREME HYGIENIC

Maintains cleanliness by inhibiting the growth of bacteria. Also suitable for bath and toilet areas.



EASY TO CURVE

Clean and smooth.



INDOOR AIR QUALITY FEATURE

Helps purify and maintain good air quality, preventing bad smell inside.





INDOOR FLOORING SOLUTION

Selecting the right flooring for office and commercial spaces involves considering the specific needs of the environment, including factors like durability, maintenance, aesthetics, and comfort. Each of these flooring types—vinyl, carpets, and heavy-duty tiles—offers unique characteristics that can enhance the functionality and appeal of a space.

CHARACTERISTICS OF **GOOD INDOOR FLOORING**

Durability

Designed to withstand heavy foot traffic, highly resistant to wear and tear making them ideal for commercial use.

Hygienic

Surfaces treatment Solutions like Evercare, PUR+, Protect shield Surfaces to achieved Anti-Virus/Anti-Bacterial features and prevent the spread of germs.

Comfort

Soft underfoot, providing warmth and comfort in office environments. Offers a softer surface underfoot compared to harder flooring types.

Slip-Resistance

Heavy-duty tiles come with a textured finish, Dense concentration of deep inlaid anti-slip particles throughout the wear layer improving safety in busy areas.

Heavy Traffic Duty

Suitable for various environments, from lobbies to break rooms, adapting to diverse design needs. Requires minimal upkeep compared to other flooring types; resistant to scratches and dents.

Easy Installations

Systems that track usage patterns and locker availability Alerts or notifications for management purposes, improving efficiency.

LUXURY VINYL TILE

LOOSELAY TILES DESIGNED FOR HEAVY TRAFFIC ENVIRONMENT

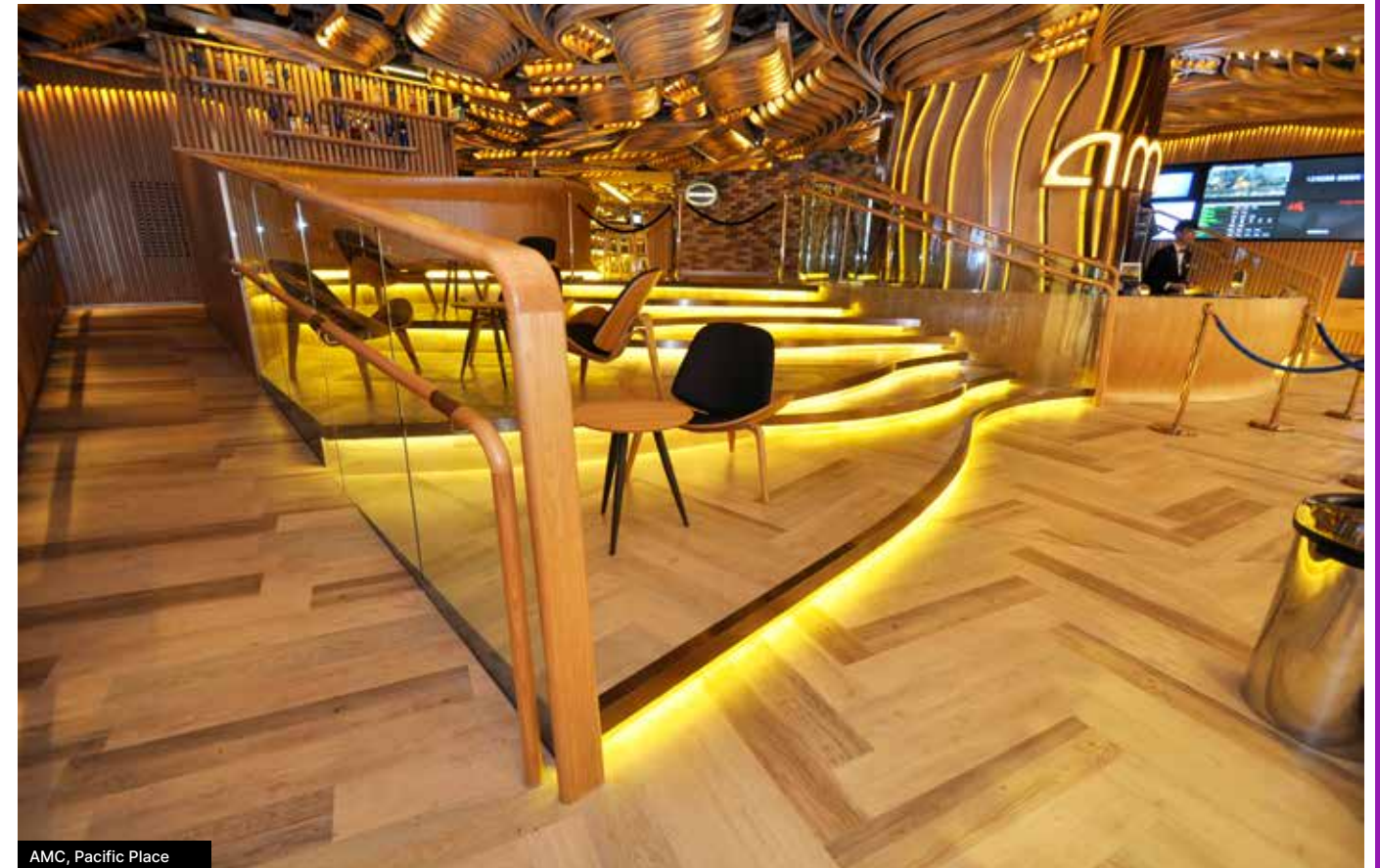


CREATION

CREATION 30 | CREATION 55 |
CREATION 70 SAGA



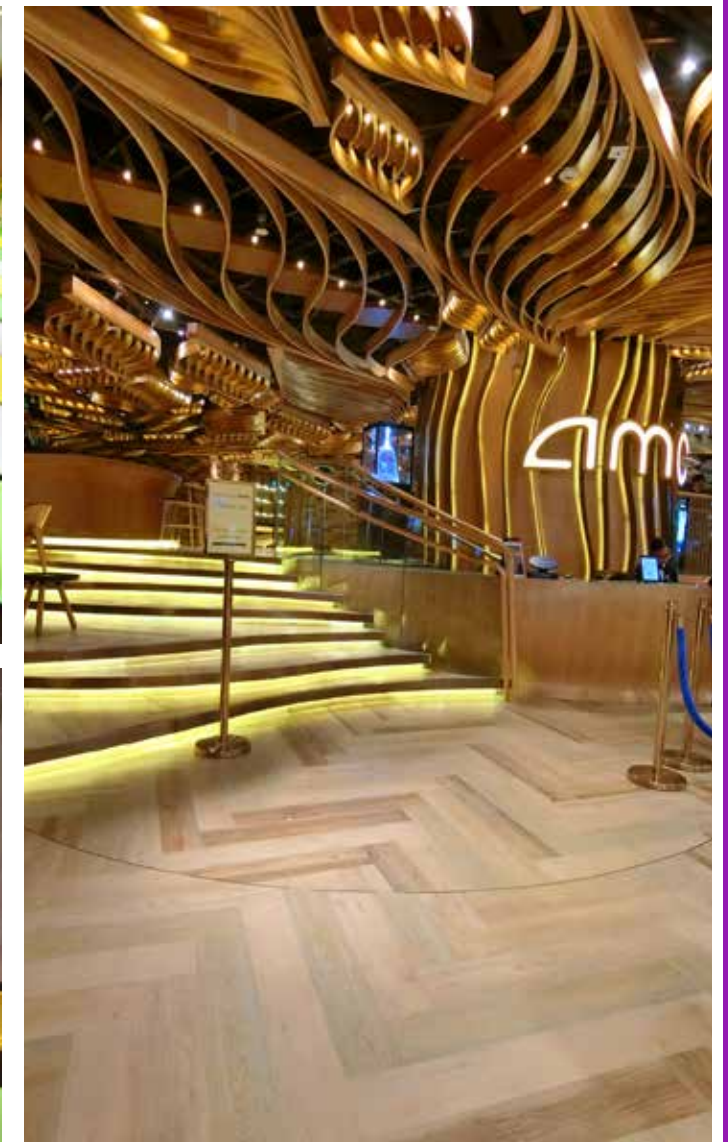
Protecshield™ Treatment



AMC, Pacific Place



Two Taikoo Place



OFFICE / RECEPTION AREA

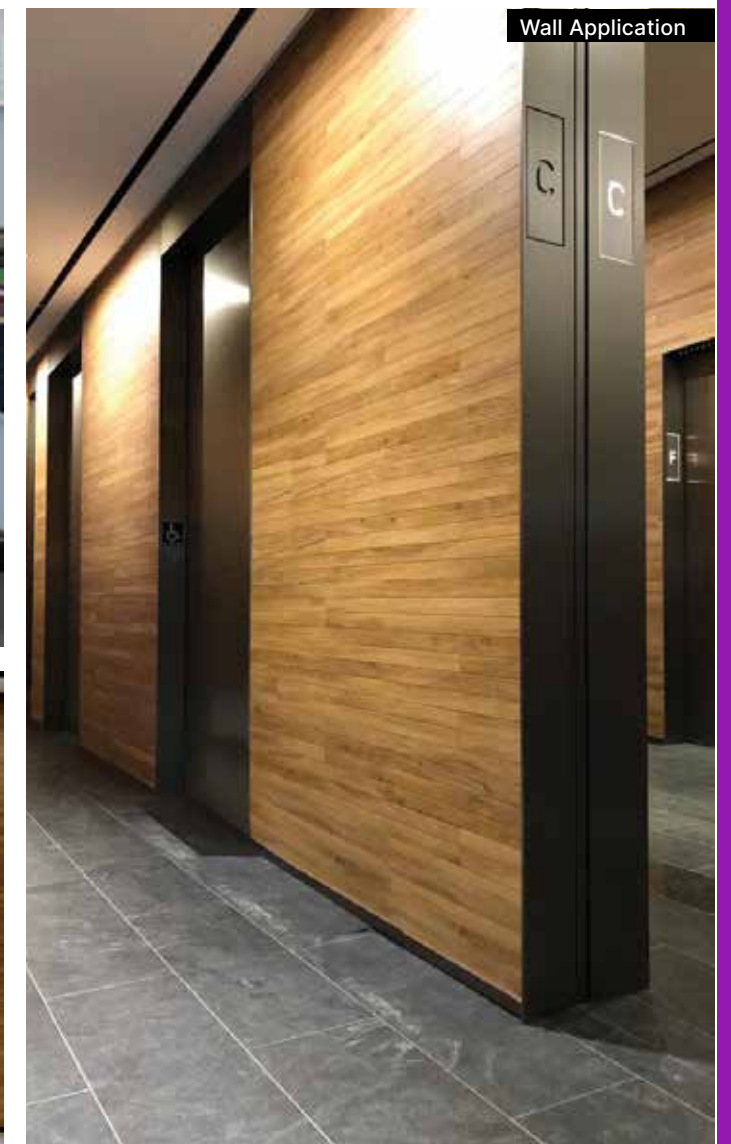
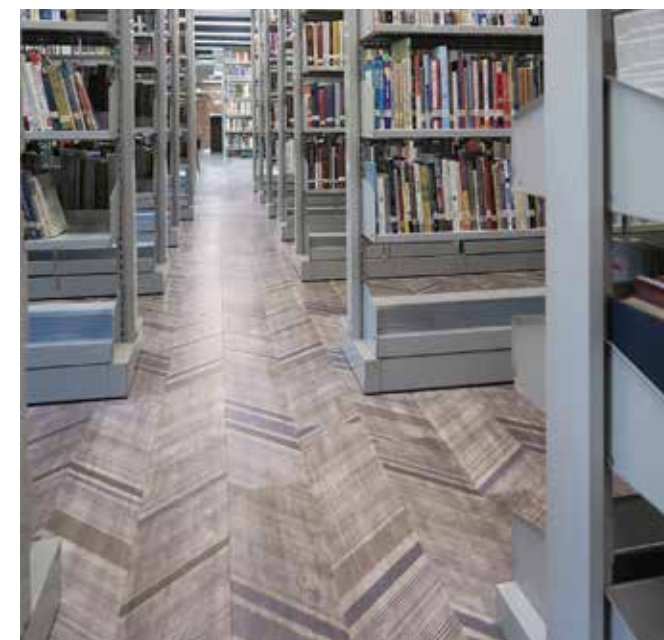
Gerflor



ERM OFFICE



EVANGEL SEMINARY - MEIFOO



Wall Application



Wall Application

TWO TAIKOO PLACE

OFFICE / RECEPTION AREA

LVT / SPC

FOR COMMERCIAL INDOOR SPACES

ArmstrongFlooring™



AMC, Pacific Place



WATERPROOF

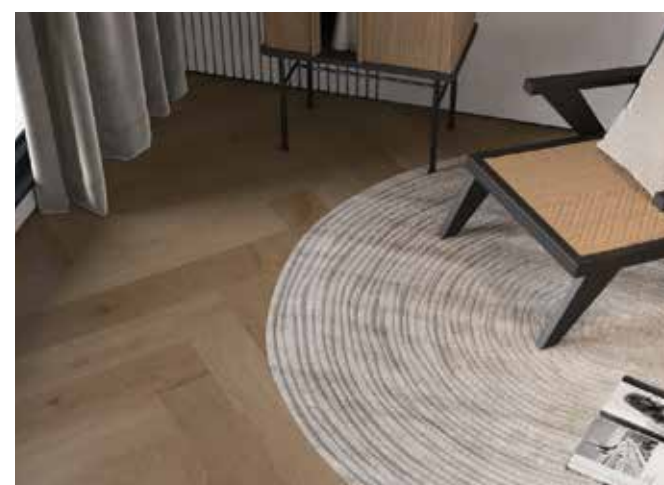


Armstrong

OFFICE / RECEPTION AREA

TITAN

OFFICE INDOOR FLOORING



99% ANTIBACTERIA

Antibacterial coating and stain-resistant, easy to clean.



ANTI-STAIN AND WEAR-RESISTANT

Enhances floor stability and improves floor elasticity.



WPC CLEAN ELASTIC FLOOR

Ultra-thick WPC layer ensures the floor is stable and not easily deformed.



Easy to Install

WATERPROOF & MOISTURE-PROOF

Moisture-proof and irritating, and comfortable on the feet.



OFFICE / RECEPTION AREA

CARPET TILE

FOR COMMERCIAL INDOOR SPACES

ArmstrongFlooring



PRO-CARE FIBER NYLON



DESIGN IN MOTION



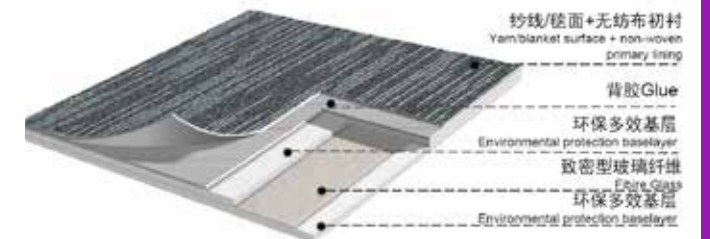
STRONG WEAR RESISTANCE

Advanced protective and antistatic treatment, which ensure the excellent performance and strong wear resistance of each fiber.



PRO-CARE FIBER NYLON

Best collection of solution dyed nylon fiber within top international brands. Rich in color and easy to clean, It's colorfast with high color fastness



5 ELEMENTS WITH STYLES

5 Elements is a fivefold conceptual scheme that many traditional Eastern fields used to explain a wide array of phenomena. The elements include gold, wood, water, fire, and soil. In fact, the five elements are particularly emphasized in the interior.

INDOOR AIR QUALITY

CRI Green Label Plus grade A $\leq 0.500\text{mg}/\text{m}^2\text{h}$



COLOR CONTOURS & DESIGN VARIETIES

A rich variety of 36 colors, as matched per different directions and colors, shall form varied floor performances.



361° Commercial Solution
BACK-OF-HOUSE

INTERLOCKING TILES

THE BEST HEAVY TRAFFIC FLOORING SOLUTION

Gerflor
theflooringgroup

GTI MAX & ATTRACTION

BACK-OF-HOUSE / SERVICE AREA /
STORAGE ROOM

FAST & EASY INSTALLATION

PUR +



SAFE, QUIET & COMFORTABLE



19 dB Less Noise
Underfoot comfort: reduces fatigue



4 x Less Hazardous



Slip Resistant



Heavy Traffic Resistance
Dynamic Load: up to 6000 kg*
Static load: up to 50 kg/cm²

EXTREMELY HARDWEARING

WEARLAYERS: GTI MAX - 2 mm
GTI Attraction - 1 mm



Tiles Double Pressed
at Over 3000 T



EASY INSTALLATION ON ANY SURFACE

No need to stop work



INSTALLATION
ON ANY TYPE OF SURFACE

**10
YEAR
WARRANTY**



Scan to Explore!



BACK-OF-HOUSE

HAPPY VALLEY - CLUBHOUSE

SHUI ON CENTRE



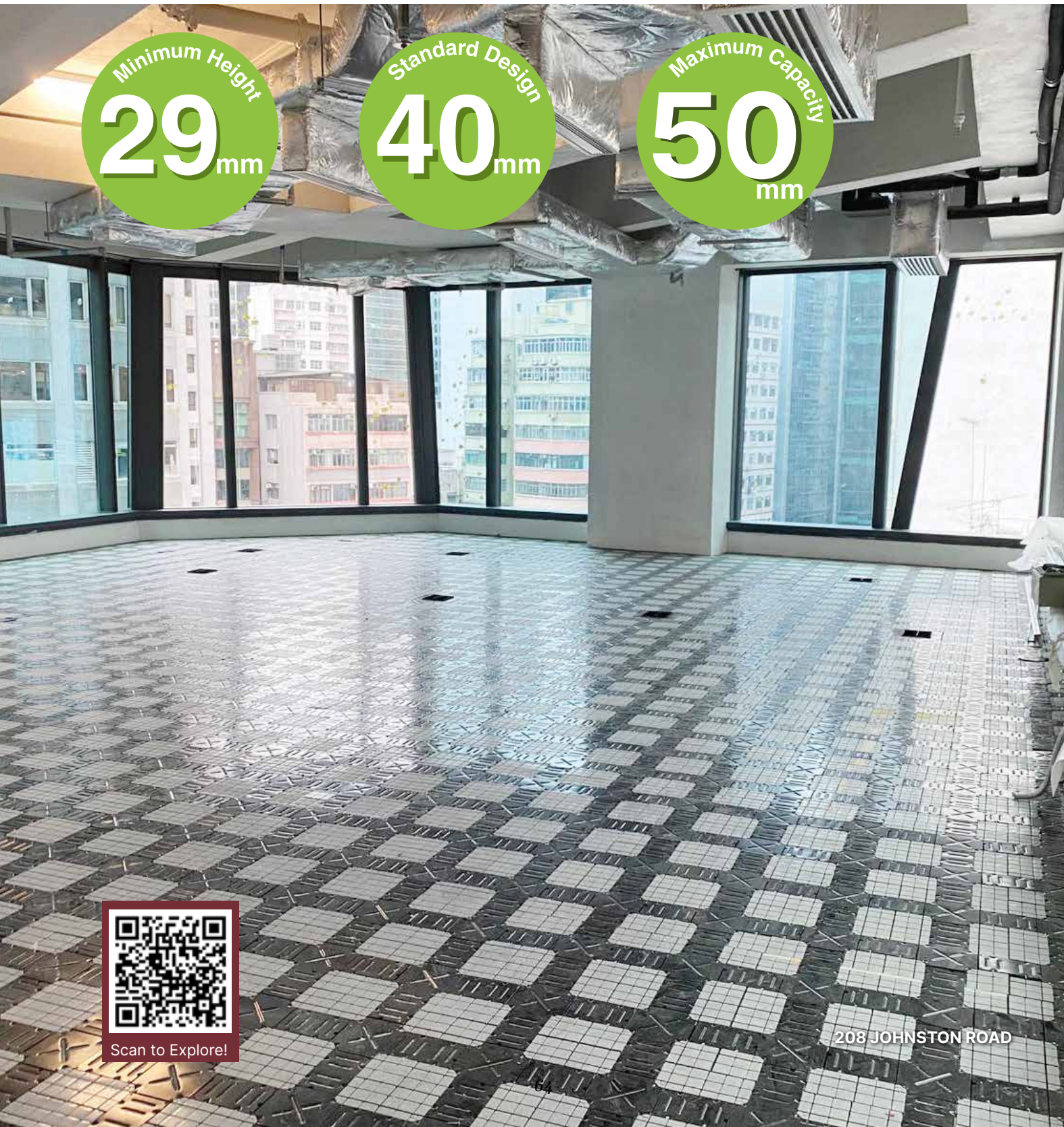
361° Commercial Solution

OFFICE / I.T ROOM

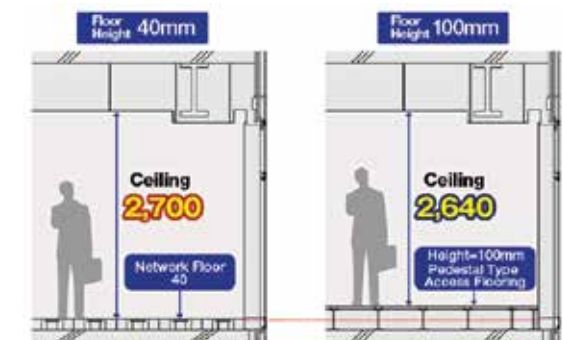
ACCESS FLOOR SYSTEM

CABLE MANAGEMENT SYSTEM

Network Floor



MAXIMIZES THE HEADROOM



Suitable for office renovation without raised floor reserved.

EASY INSTALLATION/MAINTENANCE

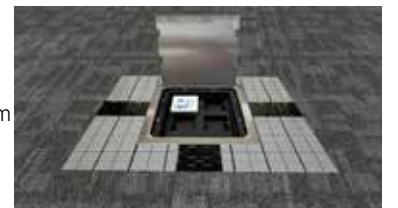
BASE MAT 50 PLUS

50(H) × 600(W) × 600(L)mm



SOCKET BOX 50

56 (H) × 295 (W) × 295 (L)mm



EASY CABLING

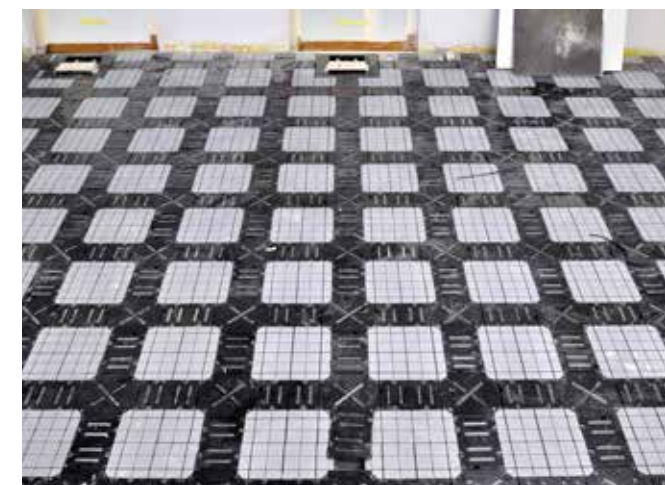
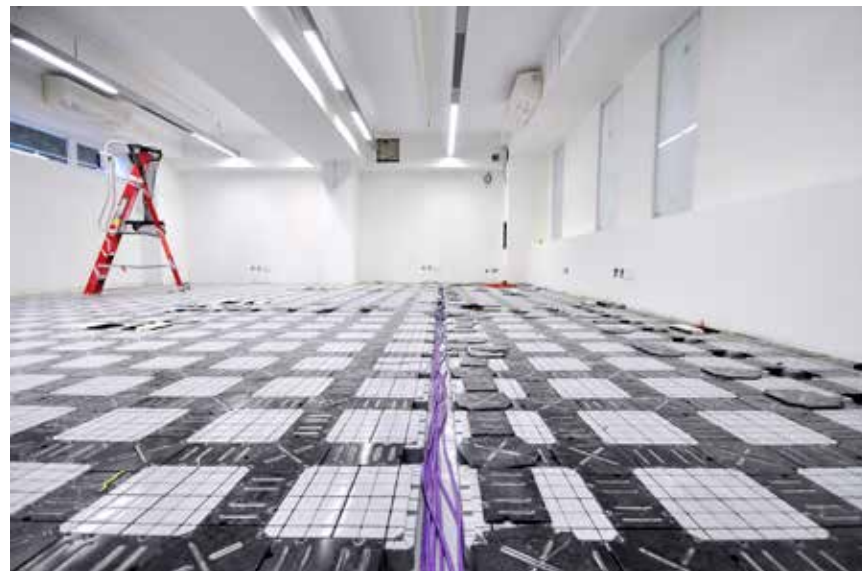
Easy to relocate and add outlets to other place.



HEAVY LOAD BEARING



CABLE MANAGEMENT SYSTEM



OUTDOOR FLOORING SOLUTION

Good outdoor decking flooring in the office and commercial sector serves as a vital extension of exterior spaces, seamlessly bridging the gap between the outdoors and nature. A well-designed outdoor deck enhances aesthetics and functionality, creating inviting environments for employees and clients to connect and collaborate.

CHARACTERISTICS OF **GOOD OUTDOOR FLOORING**

Durability

Outdoor flooring that is designed to withstand the elements, making it resistant to cracking, fading, splintering, and warping.

UV Resistance

PC materials are often treated to resist UV rays, preventing fading and ensuring the color lasts longer in sunlight.

Resistant to Insects

Outdoor Flooring has anti-termite damage. WPC is not prone to damage from termites or other wood-boring insects.

Slip-Resistance

Designed with textured surfaces, providing better traction and reducing the risk of slips and falls.

Weather Resistance

WPC is inherently resistant to moisture and humidity, which makes it suitable for outdoor settings and areas with high foot traffic.

Easy Installations

Outdoor flooring solution that come with straightforward installation methods (such as interlocking or clip systems), reducing labor costs and installation time.



WOOD PLASTIC COMPOSITE

OUTDOOR DECKING



Scan to Explore!

DECKING 1

The Pier Hotel, Sai Kung

TERMITE FUNGUS FREE

No bacteria ,Terminate damage or corrosion

Natural Deck Wood Kankyo-wood II

BENCH 2

Au Tau, Yuen Long

CONTRACTION & EXPANSION

The WPC has the Lower contraction and expansion ratio compare to others

Standard 5mm
Kankyo Wood II 2.3mm

LOUVER 3

MTR Hin Keng Station

LESS COLOR VARIATION

Natural Wood Kankyo-wood II

BALCONY 4

ENVIRONMENTAL GREEN

MADE OF:

Molded from
55% pulverized Padauk Wood
35% recycled plastic.
100% recyclable

Recycled Padauk Wood Recycled Plastic PEPP
Other Chemical Finished Product



HARDWOOD, BAMBOO, WPC FLOORING

INNOVATIVE DECKING



THE SHARK

One & only **ACCESSIBLE** clip for screw-in and screwless decking

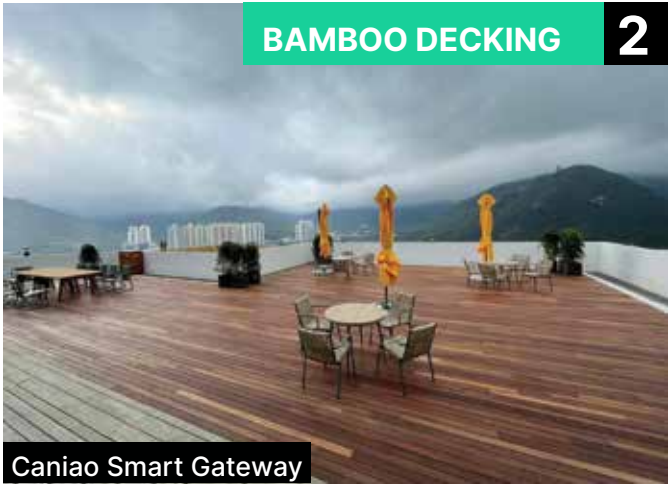
- **PATENTED INVISIBLE PROFILE WITHOUT OPEN GAPS**
- **NO SCREWS: MAGNET CLIP SYSTEM**
- **100% ACCESSIBLE**



Scan to Explore!



HARDWOOD DECKING 1



BAMBOO DECKING 2



WPC DECKING 3

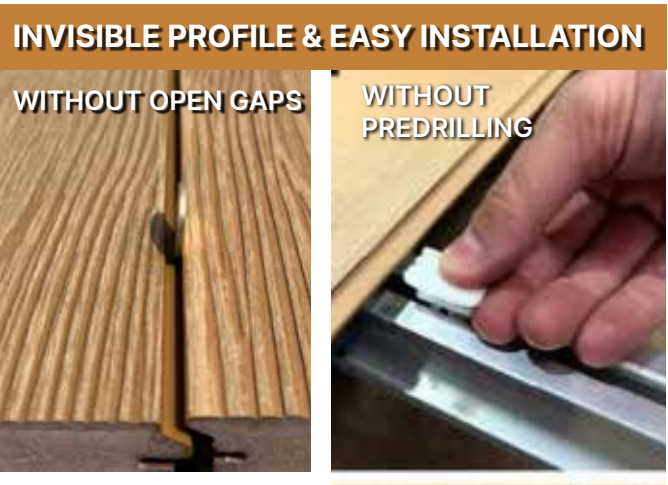


Revitalization of Tsui Ping River



KATARA TOWERS X EXTERPARK

15000m2 of EXTERPARK



INVISIBLE PROFILE & EASY INSTALLATION

WITHOUT OPEN GAPS

WITHOUT PREDRILLING



K11 Shopping Mall



Revitalization of Tsui Ping River



Tsim Sha Tsui



FLOORING ACCESSORIES SOLUTIONS

TACTILE

1

- Water-resistance
- Suitable for outdoor use
- Grade 316 stainless steel
- R13 slip-resistance



ENTRANCE MATT

2

- Increases public safety
- Removes dirt and moisture
- Improves the appearance of internal floor-coverings
- Prevents unnecessary replacements



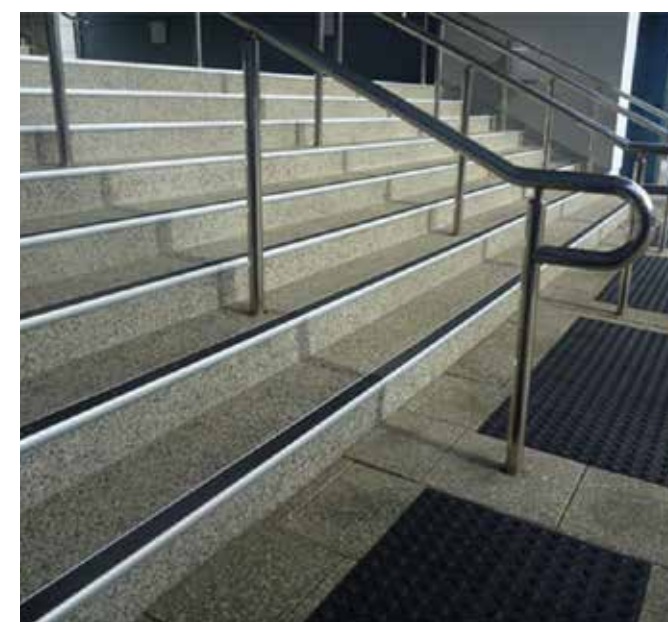
West Rail Tsuen Wan West - TW5 Cityside



STAIR EDGING

3

- Outstanding slip resistance
- Cos-effective
- Easy to clean
- Easy to install



TACTILE



ENTRANCE MATTING



STAIR EDGE



GENESIS

TEL: +852 2503 1868
info@genesis361.com.hk
www.genesis361.com.hk

361° COMMERCIAL **SOLUTIONS**

Toilet Cubicle Solutions
Locker & Bench Solutions
Wall Solutions
Designer's Laminate Solutions
Indoor Flooring Solutions
Outdoor Flooring Solutions



SCAN FOR INQUIRY